



CONSOLIDATED TECHNOLOGIES, INC.
401 CHESTNUT STREET, SUITE 220
CHATTANOOGA, TN 37402

DESIGNER: AS DATE:

PROJECT NO.: 91017

CHECKED: CONST. DATE:

SHEET OF

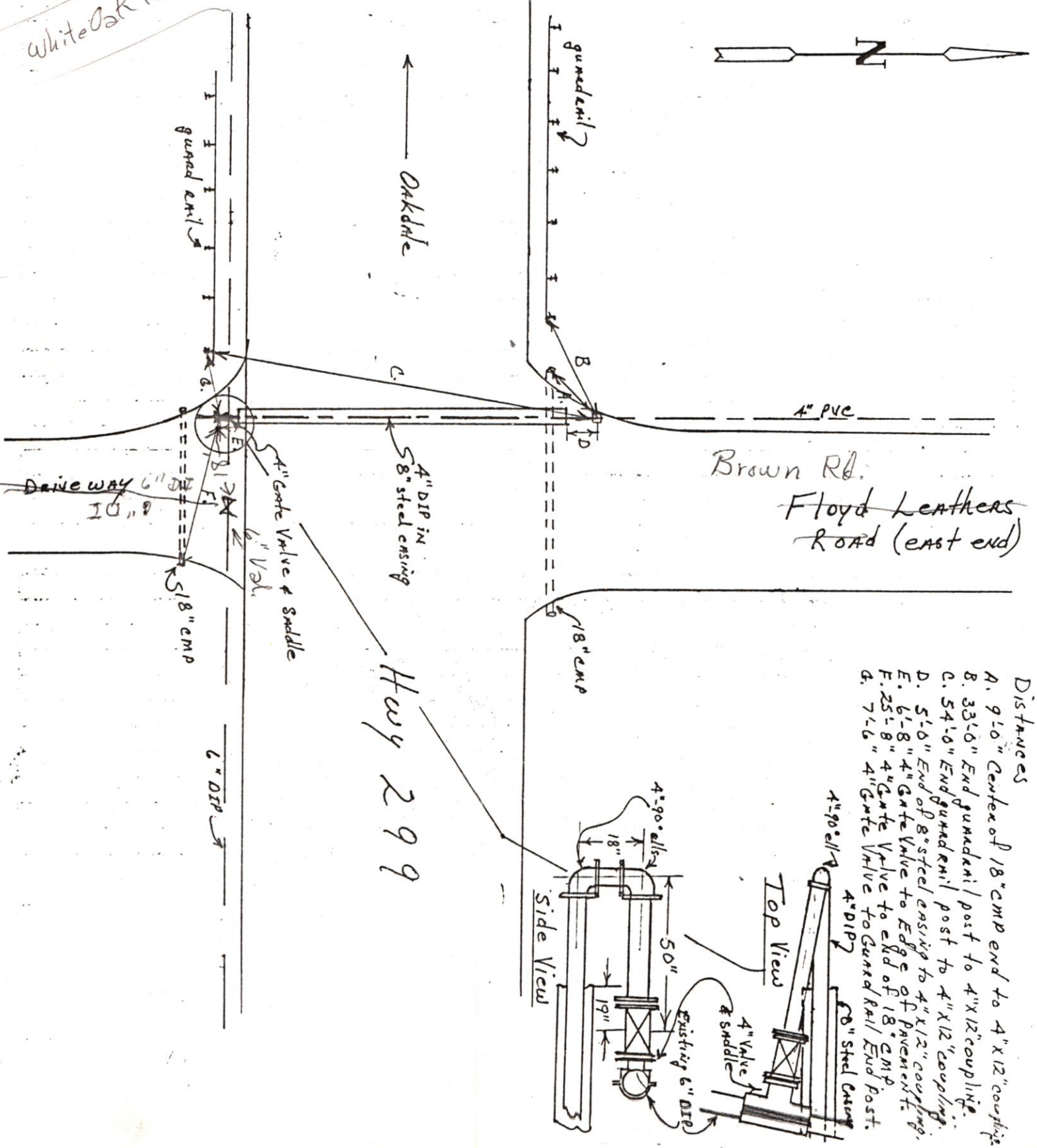
CLIENT: Oakdale/Wolfe Branch U.D. Water Line Replacement Phase 3

SUBJECT: 4" line and 8" Bore Crossing Hwy 299 at Floyd Leathers Road (east)

Fuel Center

5-92 D.K.

White Oak Rd



- DISTANCES
- A. 9'10" Center of 18" CMP end to 4" x 12" coupling.
 - B. 33'0" End guardrail post to 4" x 12" coupling.
 - C. 54'0" End guardrail post to 4" x 12" coupling.
 - D. 5'6" End of 8" steel casing to 4" x 12" coupling.
 - E. 6'-8" 4" Gate Valve to Edge of Pavement.
 - F. 25'-8" 4" Gate Valve to end of 18" CMP.
 - G. 7'-6" 4" Gate Valve to Guard Rail End Post.

