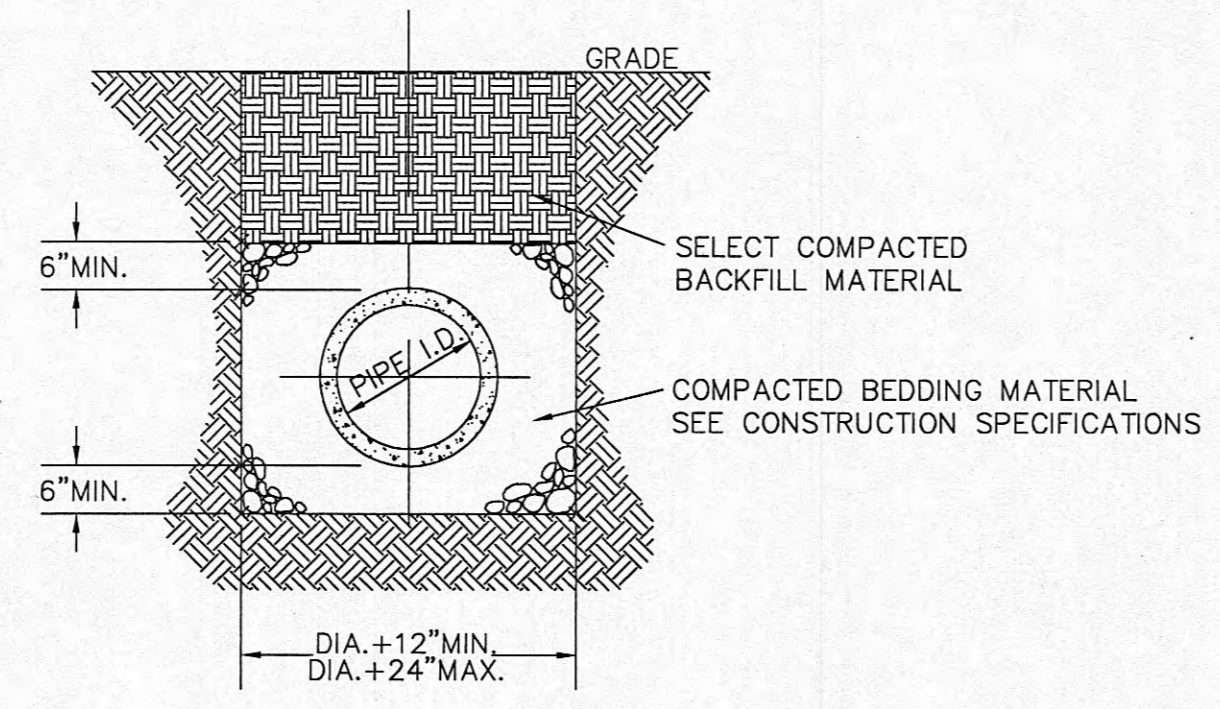
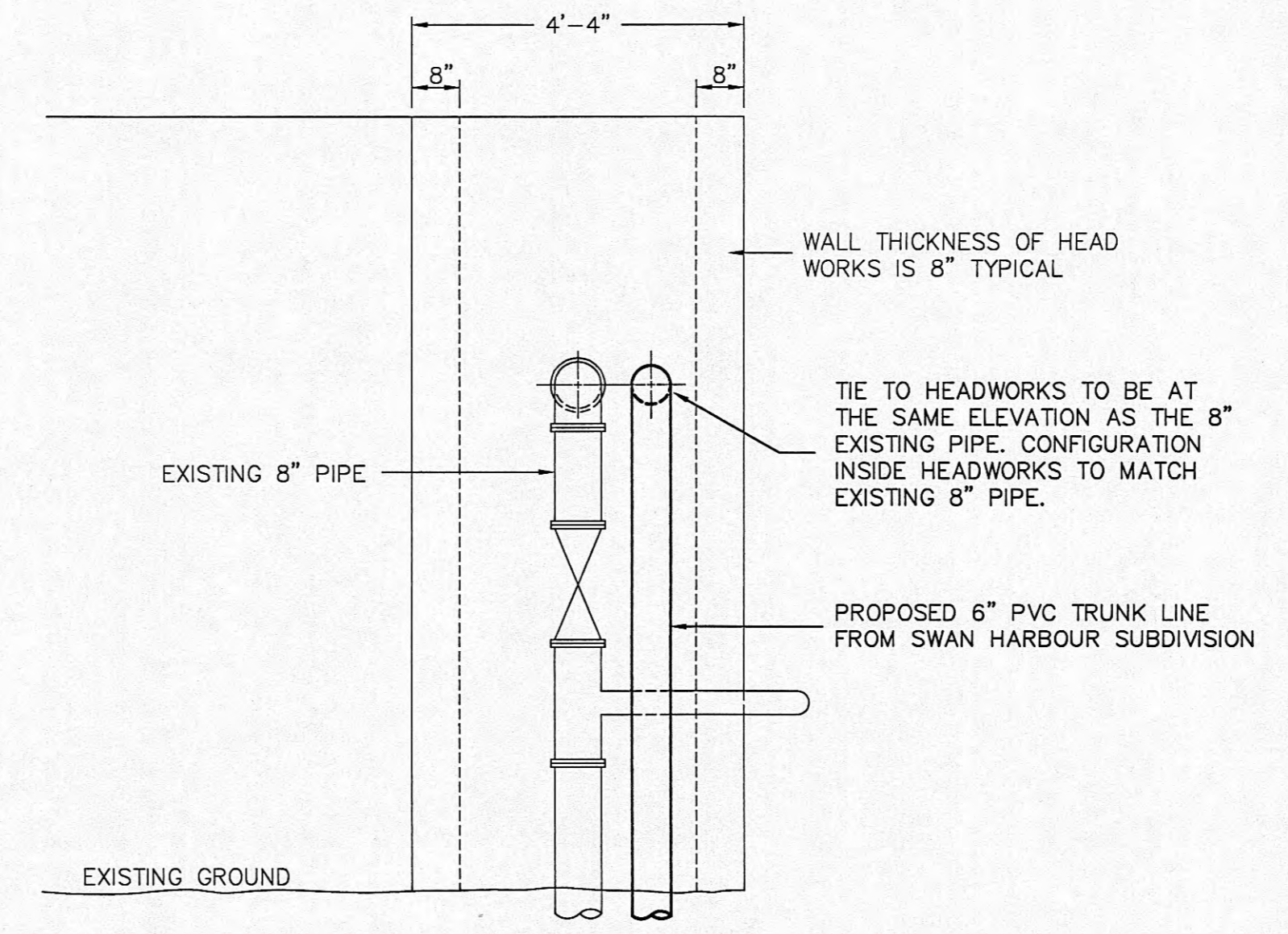


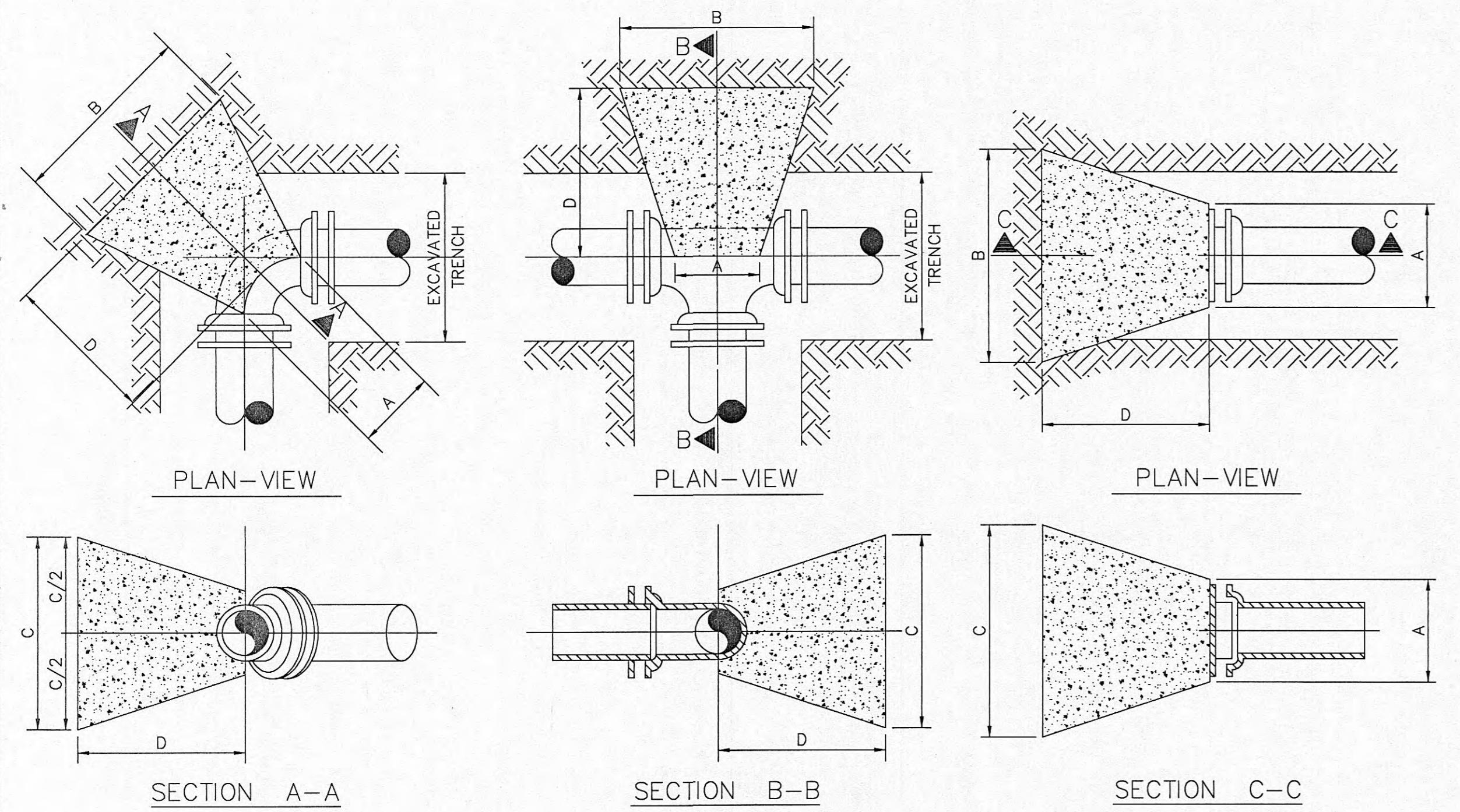
**VALVE INSTALLATION**  
NOT TO SCALE



**TYPICAL PIPE BEDDING**  
NOT TO SCALE



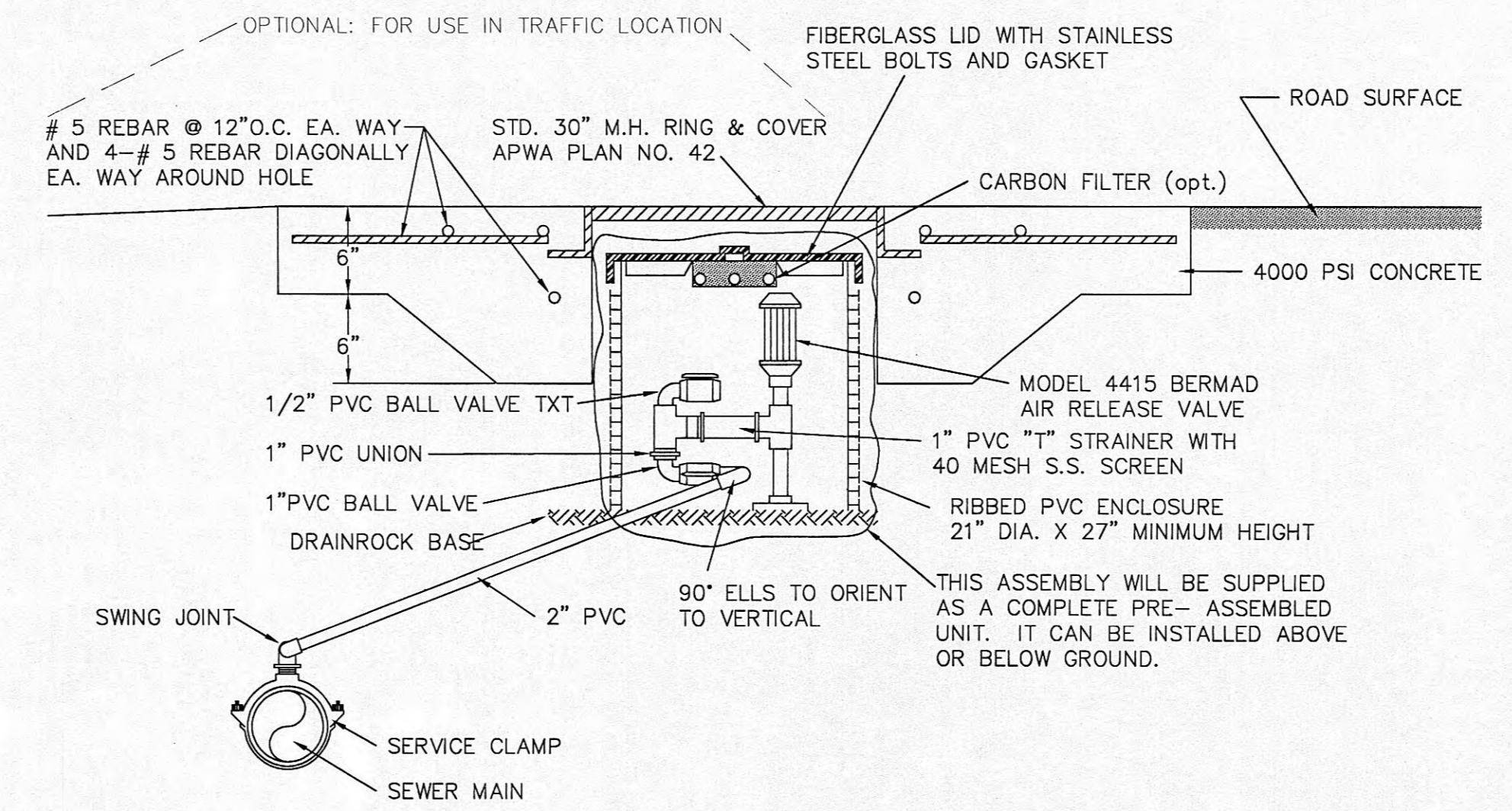
**HEADWORKS TIE-IN DETAIL - ELEVATION**  
NOT TO SCALE



THRUST BLOCK DIMENSIONS																				
PIPE SIZE	90° BEND				45° BEND				22 1/2° BEND				11 1/4° BEND				TEE OR PLUG			
	A	B	C	D	A	B	C	D	A	B	C	D	A	B	C	D	A	B	C	D
8"	1'-0"	3'-0"	3'-0"	3'-0"	0'-7"	2'-5"	2'-5"	2'-5"	0'-10"	2'-0"	2'-0"	2'-0"	0'-10"	2'-0"	2'-0"	2'-0"	1'-0"	2'-5"	2'-5"	2'-5"
6"	0'-11"	2'-5"	2'-5"	2'-5"	0'-7"	2'-0"	2'-0"	2'-0"	0'-9"	2'-0"	2'-0"	2'-0"	0'-9"	1'-0"	1'-0"	2'-0"	0'-11"	2'-0"	2'-0"	2'-0"
3"	0'-9"	1'-9"	1'-9"	2'-0"	0'-5"	1'-6"	1'-6"	2'-0"	0'-7"	1'-0"	1'-0"	2'-0"	0'-7"	1'-0"	1'-0"	2'-0"	0'-10"	1'-6"	1'-6"	2'-0"

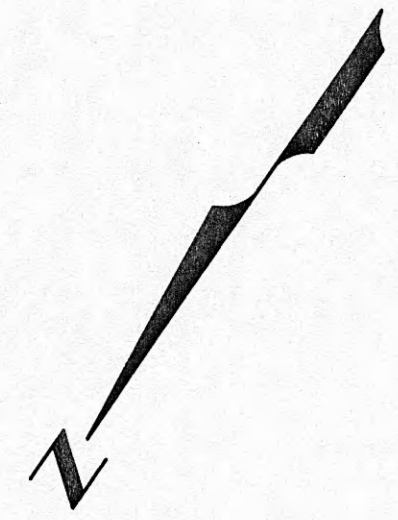
- NOTES:
- THRUST BLOCK TO BE MINIMUM COMPRESSIVE STRENGTH OF 3,000 PSI CONCRETE AT 28 DAYS.
  - DIMENSIONS CALCULATED USING A SOIL LOAD BEARING CAPACITY OF 2,000 PSF. IF SOIL BEARING CAPACITY IS FOUND TO BE LESS THAN 2,000 PSF, THE ENGINEER CAN INCREASE THESE DIMENSIONS.
  - ALL THRUST BLOCKING SHALL BEAR AGAINST UNDISTURBED SOIL. THE "D" DIMENSION SHOWN IN TABLE MAY BE INCREASED BY THE ENGINEER.
  - DESIGN FLOOD PRESSURE = 200 PSI.

**THRUST BLOCK DETAILS AND DIMENSIONS**  
NOT TO SCALE



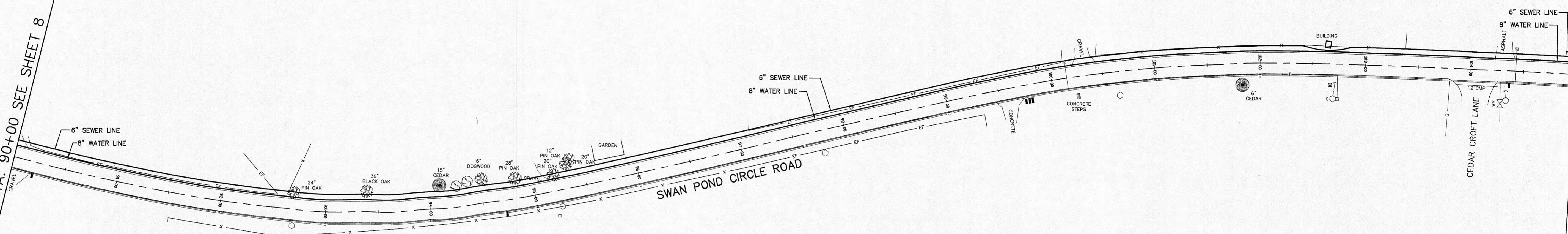
**AIR RELEASE ASSEMBLY**  
NOT TO SCALE  
ORENCO SYSTEMS, INC. MODEL AR-21-4415

		10-19-94		<b>ETE CONSULTING ENGINEERING, INC.</b> 311 OAK RIDGE TURNPIKE OAK RIDGE, TN. 37830 (615)482-4053		JOB No. 94-472-1E	
		SCALE NONE				PROJECT OFF-SITE UTILITIES FOR SWAN HARBOUR SUBDIVISION	
SYMBOL		DATE		DRAWN BY DET		CLIENT SWAN HARBOUR L.P.	
REVISIONS				APPROVED PRW		TITLE DETAIL SHEET	

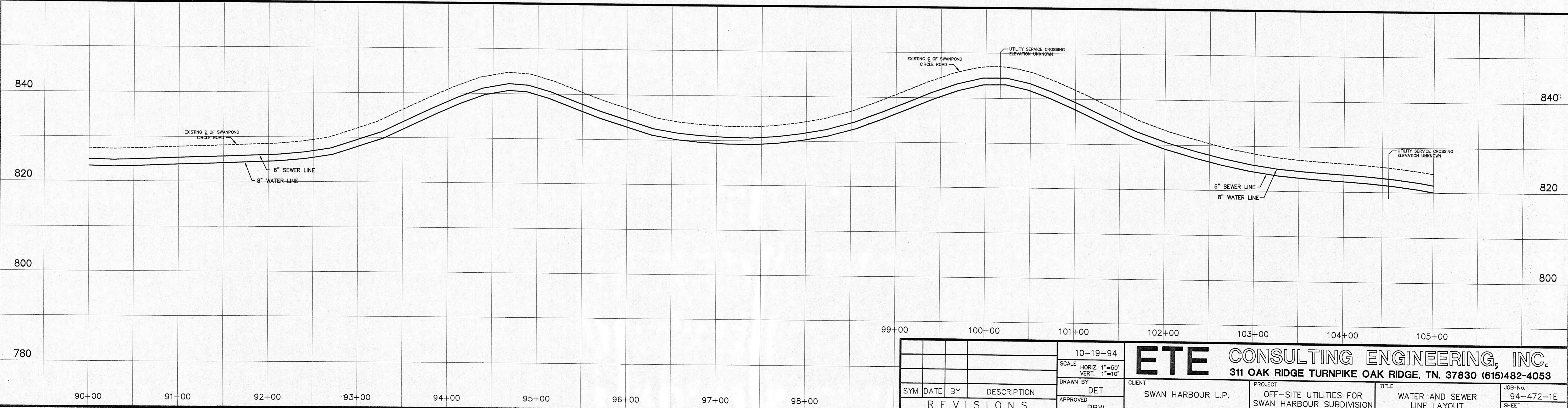


MATCH LINE STA. 90+00 SEE SHEET 8

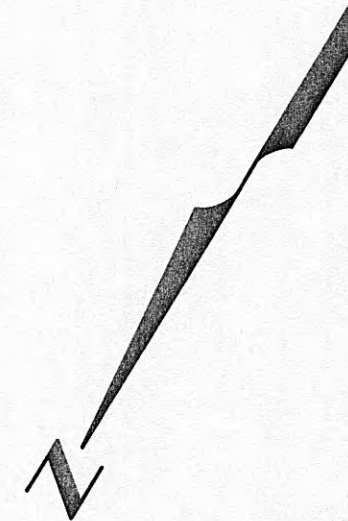
MATCH LINE STA. 105+00 SEE SHEET 10



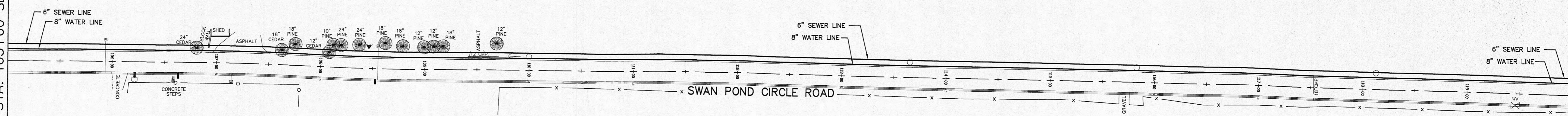
NOTE:  
 EXISTING UNDERGROUND UTILITIES SHOWN ON THIS SHEET, ARE:  
 GAS: HARRIMAN UTILITY BOARD  
 WATER: SWAN POND UTILITY DISTRICT  
 TELEPHONE: SOUTH CENTRAL BELL



				10-19-94	<b>ETE CONSULTING ENGINEERING, INC.</b>			
				SCALE	311 OAK RIDGE TURNPIKE OAK RIDGE, TN. 37830 (615)482-4053			
				HORIZ. 1"=50'	CLIENT			
				VERT. 1"=10'	SWAN HARBOUR L.P.			
				DRAWN BY	PROJECT			
				DET	OFF-SITE UTILITIES FOR SWAN HARBOUR SUBDIVISION			
				APPROVED	TITLE			
				PRW	WATER AND SEWER LINE LAYOUT			
SYM				DATE	JOB No.			
REVISIONS				BY	94-472-1E			
				DESCRIPTION	SHEET			
					9 OF 20			

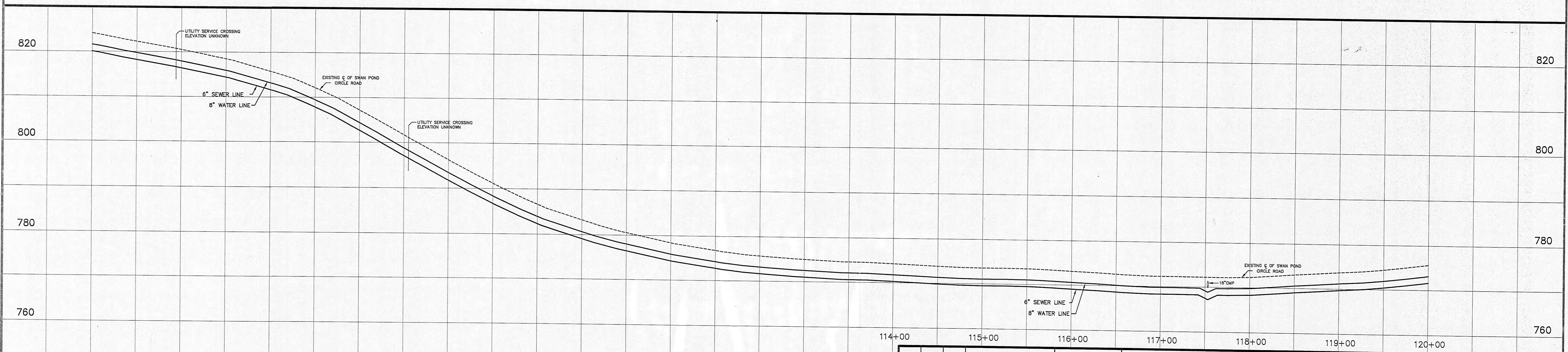


MATCH LINE STA. 105+00 SEE SHEET 9

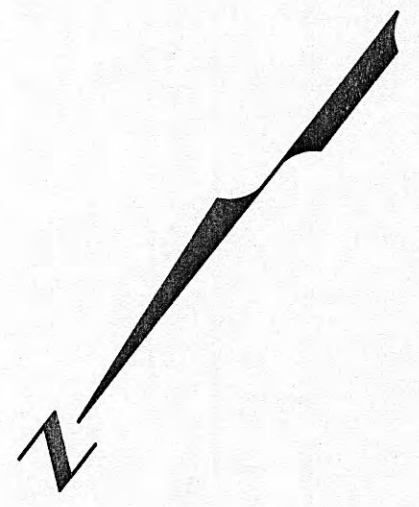


MATCH LINE STA. 120+00 SEE SHEET 11

NOTE:  
 EXISTING UNDERGROUND UTILITIES  
 SHOWN ON THIS SHEET, ARE:  
 GAS: HARRIMAN UTILITY BOARD  
 WATER: SWAN POND UTILITY DISTRICT

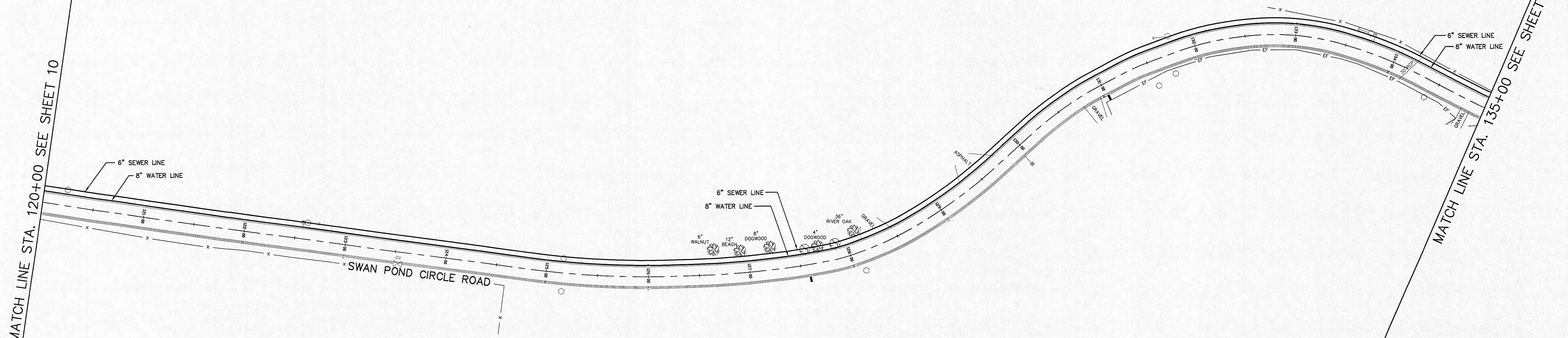


10-19-94		<b>ETE CONSULTING ENGINEERING, INC.</b>		311 OAK RIDGE TURNPIKE OAK RIDGE, TN. 37830 (615)482-4053	
SCALE HORIZ. 1"=50' VERT. 1"=10'		CLIENT	PROJECT	TITLE	JOB No.
DRAWN BY DET		SWAN HARBOUR L.P.	OFF-SITE UTILITIES FOR SWAN HARBOUR SUBDIVISION	WATER AND SEWER LINE LAYOUT	94-472-1E
APPROVED PRW					SHEET 10 OF 20

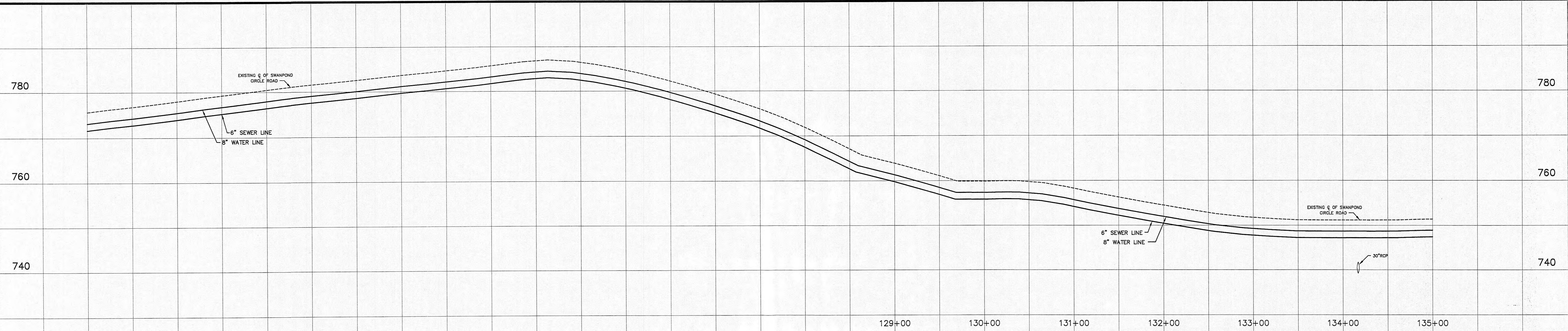


MATCH LINE STA. 120+00 SEE SHEET 10

MATCH LINE STA. 135+00 SEE SHEET 12

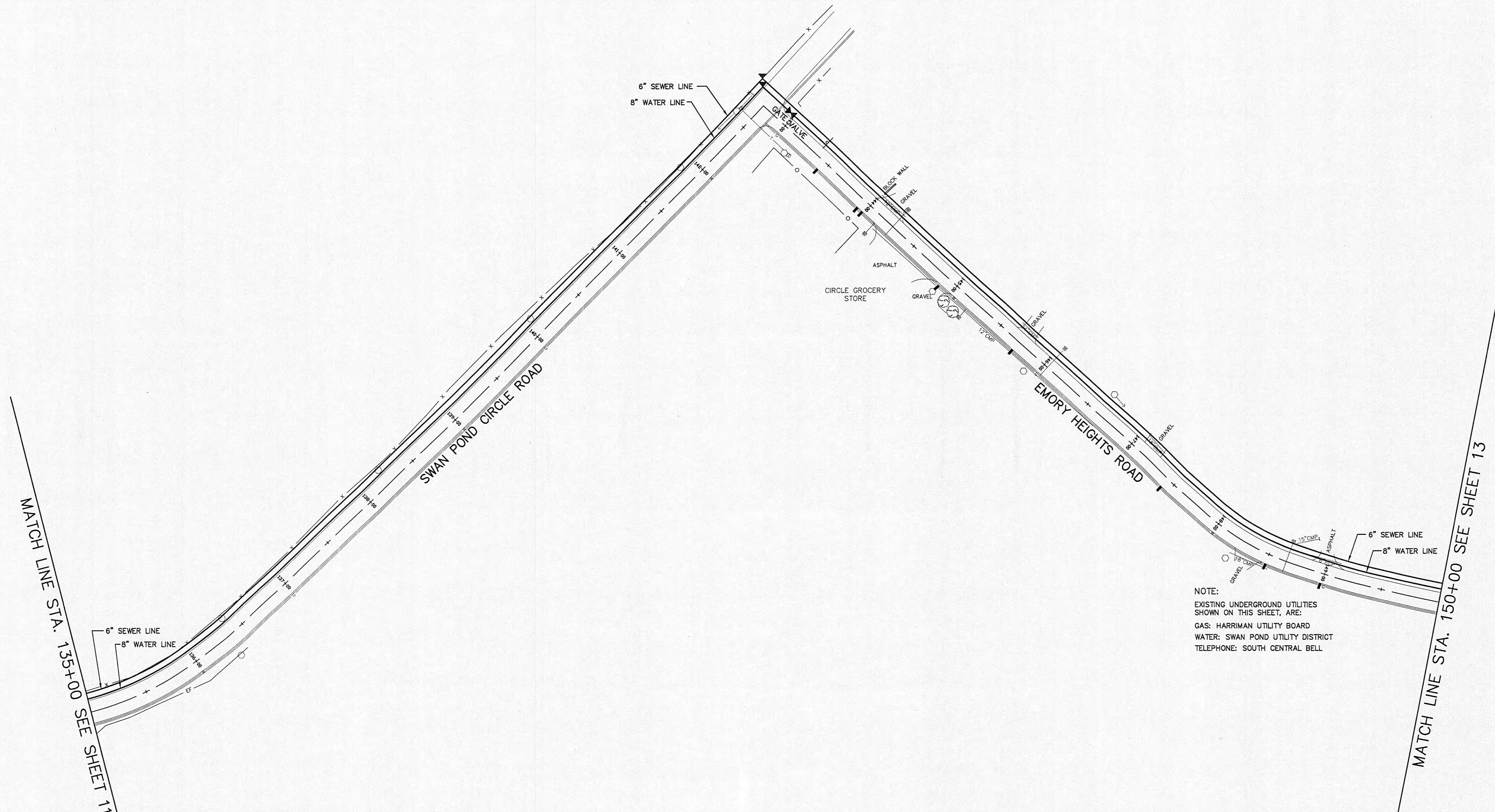


NOTE:  
 EXISTING UNDERGROUND UTILITIES SHOWN ON THIS SHEET, ARE:  
 GAS: HARRIMAN UTILITY BOARD  
 WATER: SWAN POND UTILITY DISTRICT  
 TELEPHONE: SOUTH CENTRAL BELL



120+00	121+00	122+00	123+00	124+00	125+00	126+00	127+00	128+00	129+00	130+00	131+00	132+00	133+00	134+00	135+00
--------	--------	--------	--------	--------	--------	--------	--------	--------	--------	--------	--------	--------	--------	--------	--------

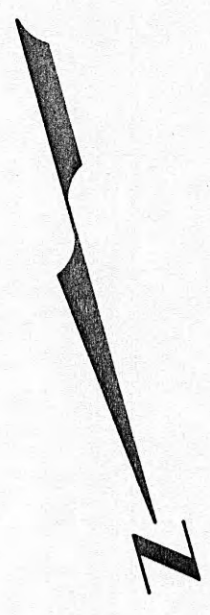
10-19-94		<b>ETE CONSULTING ENGINEERING, INC.</b>		311 OAK RIDGE TURNPIKE OAK RIDGE, TN. 37830 (615)482-4053	
SCALE	HORIZ. 1"=50'	VERT. 1"=10'	CLIENT	PROJECT	TITLE
DRAWN BY	DET	APPROVED	SWAN HARBOUR L.P.	OFF-SITE UTILITIES FOR SWAN HARBOUR SUBDIVISION	WATER AND SEWER LINE LAYOUT
REVISIONS			PRW		
				JOB No.	94-472-1E
				SHEET	11 OF 20



NOTE:  
 EXISTING UNDERGROUND UTILITIES SHOWN ON THIS SHEET, ARE:  
 GAS: HARRIMAN UTILITY BOARD  
 WATER: SWAN POND UTILITY DISTRICT  
 TELEPHONE: SOUTH CENTRAL BELL

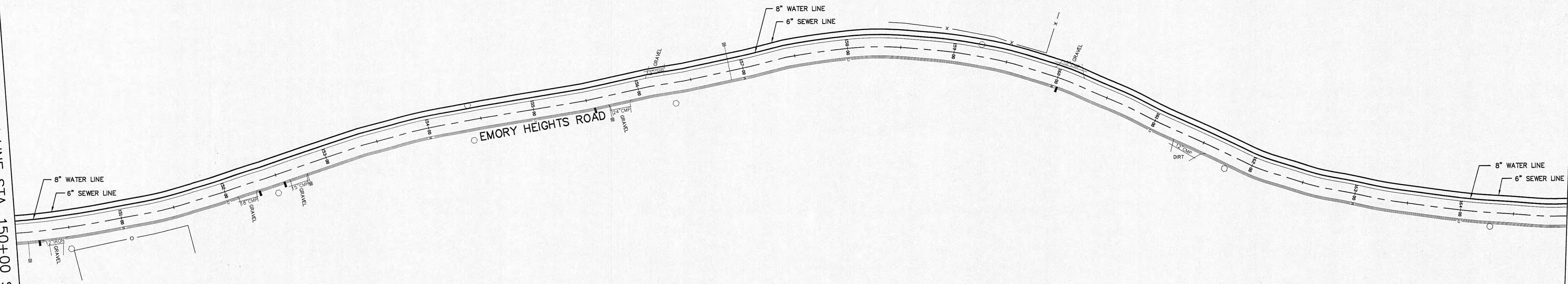


				10-19-94	<b>ETE CONSULTING ENGINEERING, INC.</b> 311 OAK RIDGE TURNPIKE OAK RIDGE, TN. 37830 (615)482-4053	CLIENT SWAN HARBOUR L.P.	PROJECT OFF-SITE UTILITIES FOR SWAN HARBOUR SUBDIVISION	TITLE WATER AND SEWER LINE LAYOUT	JOB No. 94-472-1E SHEET 12 OF 20
				SCALE HORIZ. 1"=50' VERT. 1"=10'					
SYM	DATE	BY	DESCRIPTION	APPROVED	DET	PRW			
REVISIONS									

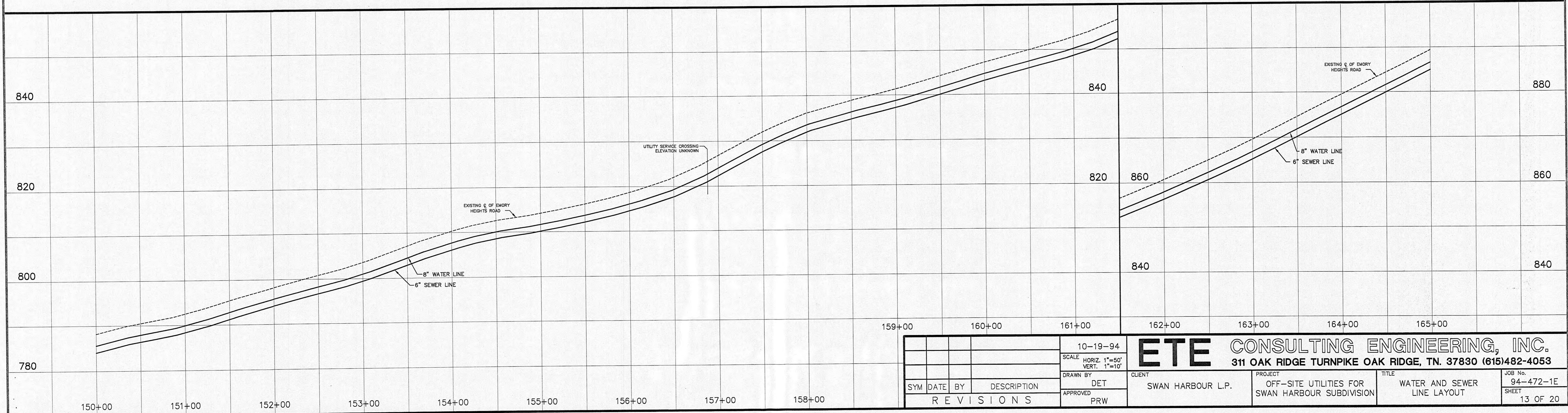


MATCH LINE STA. 150+00 SEE SHEET 12

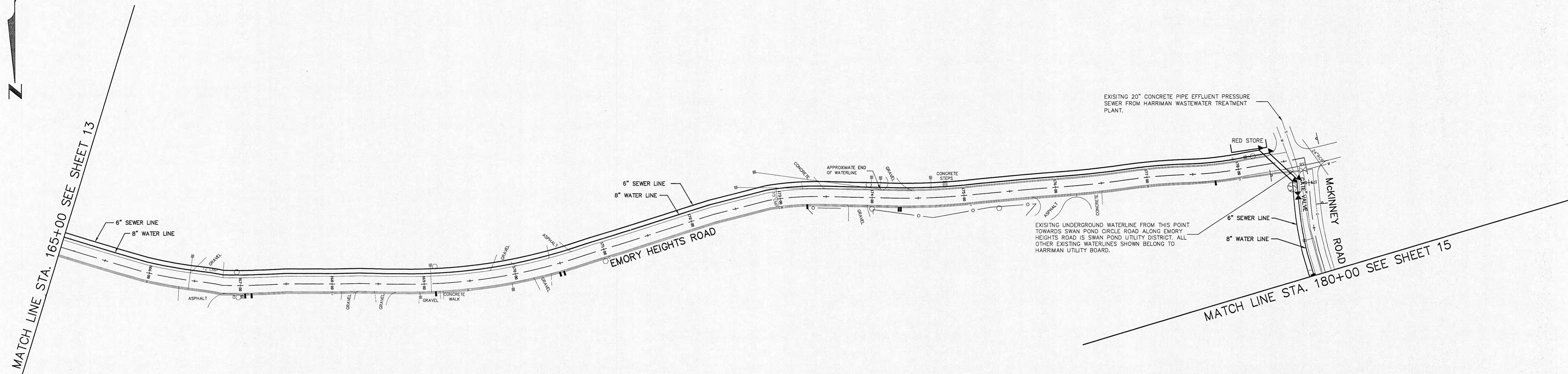
MATCH LINE STA. 165+00 SEE SHEET 14



NOTE:  
 EXISTING UNDERGROUND UTILITIES  
 SHOWN ON THIS SHEET, ARE:  
 GAS: HARRIMAN UTILITY BOARD  
 WATER: SWAN POND UTILITY DISTRICT



				10-19-94	<b>ETE CONSULTING ENGINEERING, INC.</b>			311 OAK RIDGE TURNPIKE OAK RIDGE, TN. 37830 (615)482-4053	
				SCALE	CLIENT	PROJECT		TITLE	
				HORIZ. 1"=50'	SWAN HARBOUR L.P.	OFF-SITE UTILITIES FOR SWAN HARBOUR SUBDIVISION		WATER AND SEWER LINE LAYOUT	
				VERT. 1"=10'	APPROVED	JOB No.		SHEET	
				PRW	PRW		94-472-1E		13 OF 20
SYM				DATE	BY	DESCRIPTION	REVISIONS		

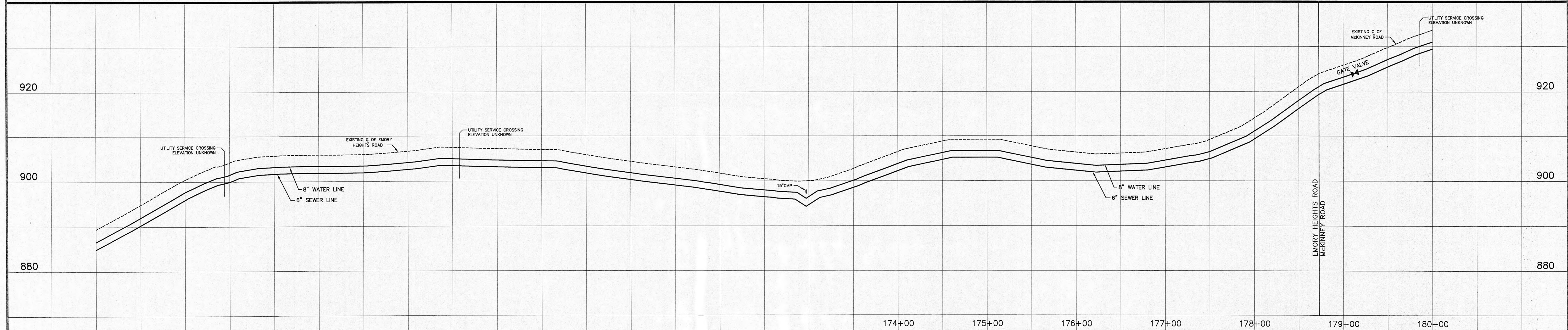


EXISTING 20" CONCRETE PIPE EFFLUENT PRESSURE SEWER FROM HARRIMAN WASTEWATER TREATMENT PLANT.

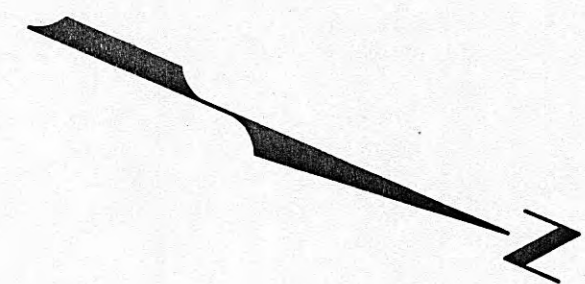
EXISTING UNDERGROUND WATERLINE FROM THIS POINT TOWARDS SWAN POND CIRCLE ROAD ALONG EMORY HEIGHTS ROAD IS SWAN POND UTILITY DISTRICT. ALL OTHER EXISTING WATERLINES SHOWN BELONG TO HARRIMAN UTILITY BOARD.

NOTES:

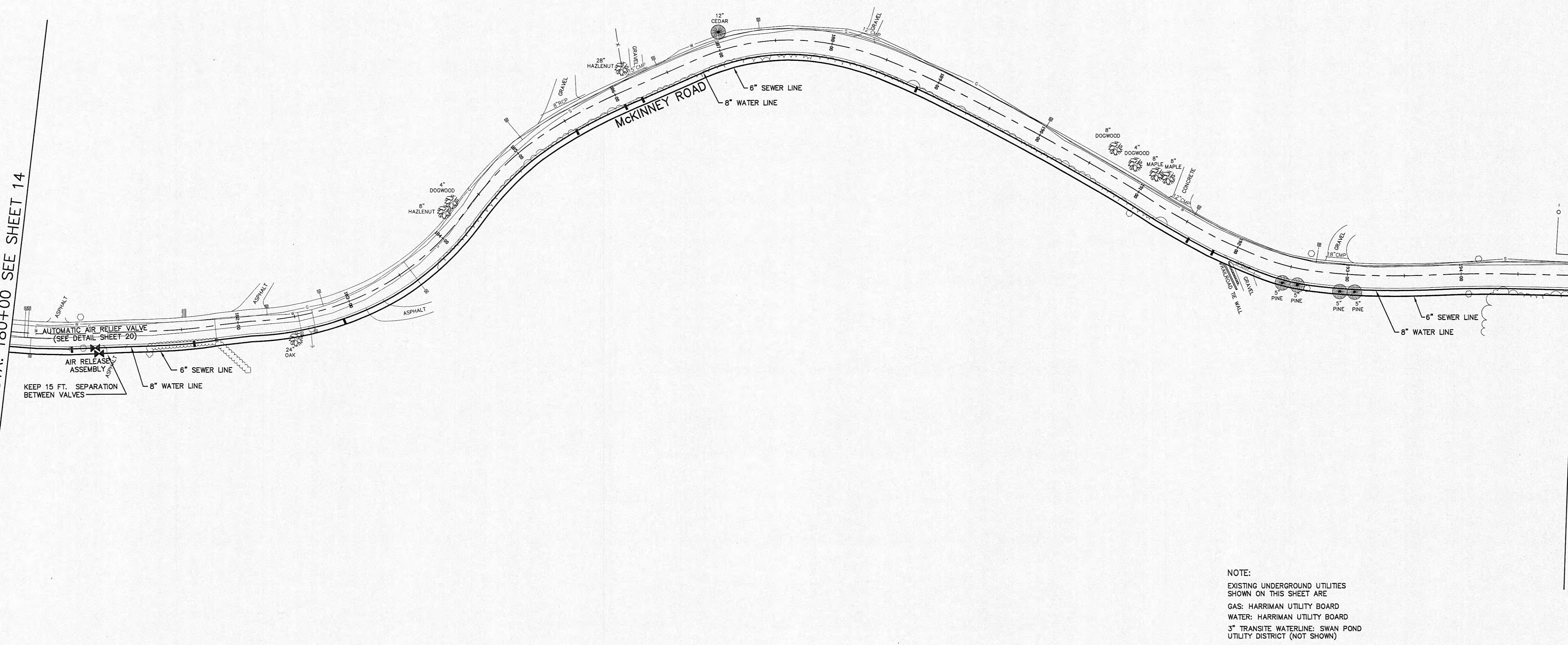
- SWAN POND UTILITY DISTRICT HAS A 3" TRANSIT WATERLINE FROM THE INTERSECTION OF MCKINNEY AND EMORY HEIGHTS ROADS ALONG PROPOSED ROUTE OF SEWER LINE. EXACT LOCATION IS NOT KNOWN AND THIS LINE IS NOT SHOWN ON THESE DRAWINGS.
- EXISTING UNDERGROUND UTILITIES SHOWN ON THIS SHEET, ARE:  
 GAS: HARRIMAN UTILITY BOARD  
 WATER: SEE NOTE ABOVE  
 SEWER: HARRIMAN UTILITY BOARD  
 TELEPHONE: SOUTH CENTRAL BELL



10-19-94		<b>ETE CONSULTING ENGINEERING, INC.</b>		311 OAK RIDGE TURNPIKE OAK RIDGE, TN. 37830 (615)482-4053	
SCALE HORIZ. 1"=50'		DRAWN BY DET		CLIENT SWAN HARBOUR L.P.	
VERT. 1"=10'		APPROVED PRW		PROJECT OFF-SITE UTILITIES FOR SWAN HARBOUR SUBDIVISION	
SYM		DATE		TITLE WATER AND SEWER LINE LAYOUT	
BY		DESCRIPTION		JOB No. 94-472-1E	
REVISIONS				SHEET 14 OF 20	



MATCH LINE STA. 180+00 SEE SHEET 14

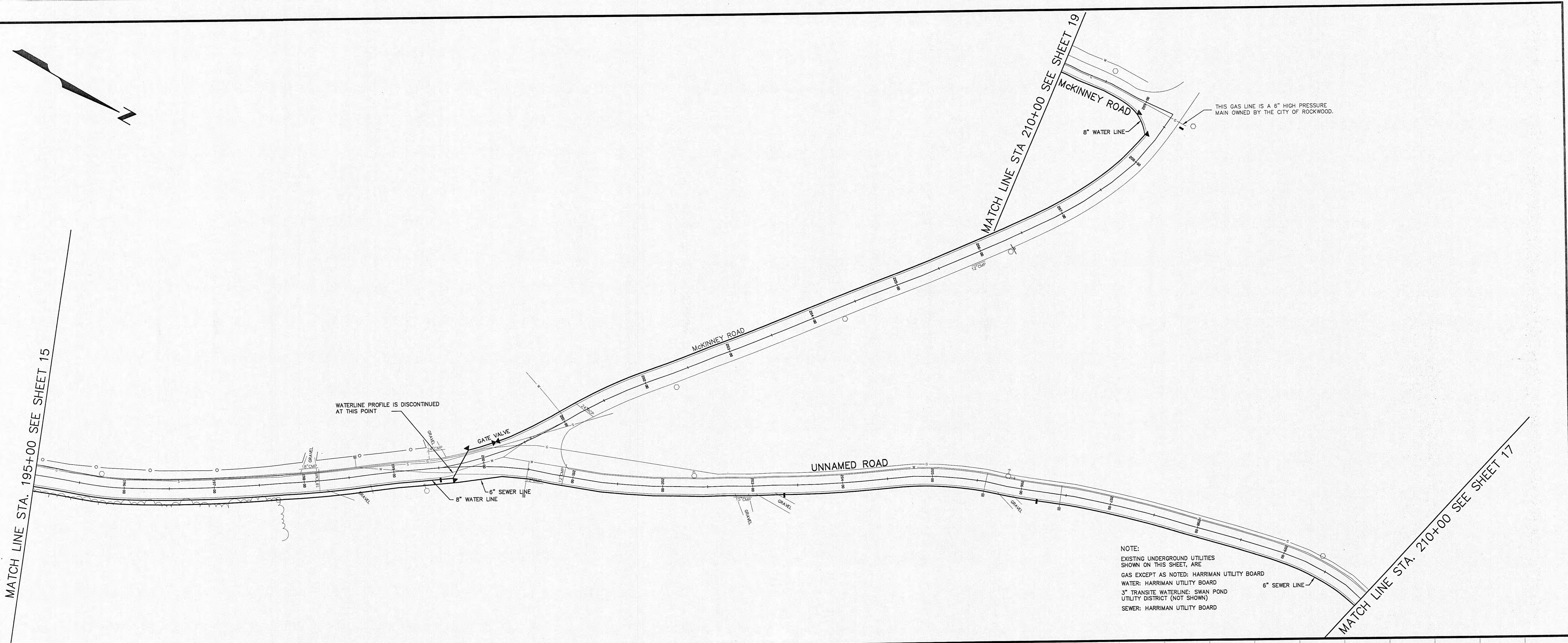
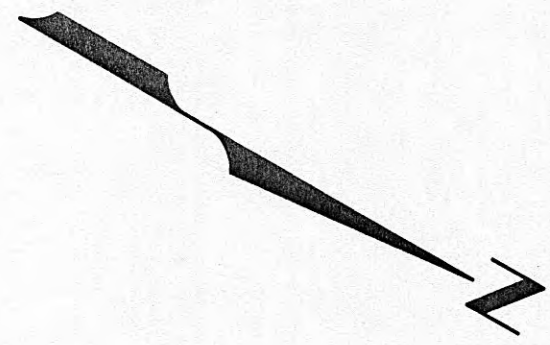


MATCH LINE STA. 195+00 SEE SHEET 16

NOTE:  
 EXISTING UNDERGROUND UTILITIES SHOWN ON THIS SHEET ARE  
 GAS: HARRIMAN UTILITY BOARD  
 WATER: HARRIMAN UTILITY BOARD  
 3" TRANSITE WATERLINE: SWAN POND UTILITY DISTRICT (NOT SHOWN)  
 SEWER: HARRIMAN UTILITY BOARD



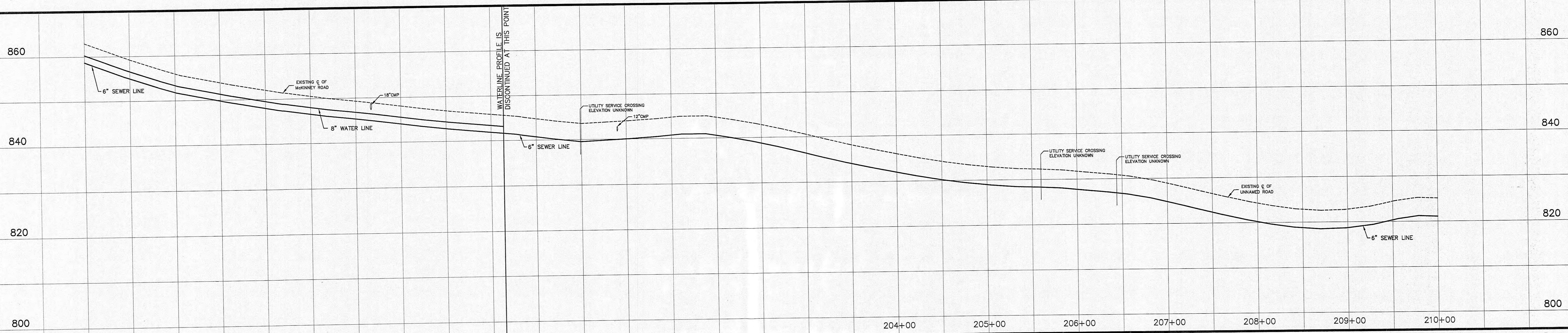
10-19-94 SCALE HORIZ. 1"=50' VERT. 1"=10'		<b>ETE CONSULTING ENGINEERING, INC.</b> 311 OAK RIDGE TURNPIKE OAK RIDGE, TN. 37830 (615)482-4053	
		CLIENT: SWAN HARBOUR L.P. PROJECT: OFF-SITE UTILITIES FOR SWAN HARBOUR SUBDIVISION TITLE: WATER AND SEWER LINE LAYOUT JOB No. 94-472-1E SHEET 15 OF 20	
DRAWN BY: DET APPROVED: PRW	SYM DATE BY DESCRIPTION REVISIONS		



THIS GAS LINE IS A 6" HIGH PRESSURE MAIN OWNED BY THE CITY OF ROCKWOOD.

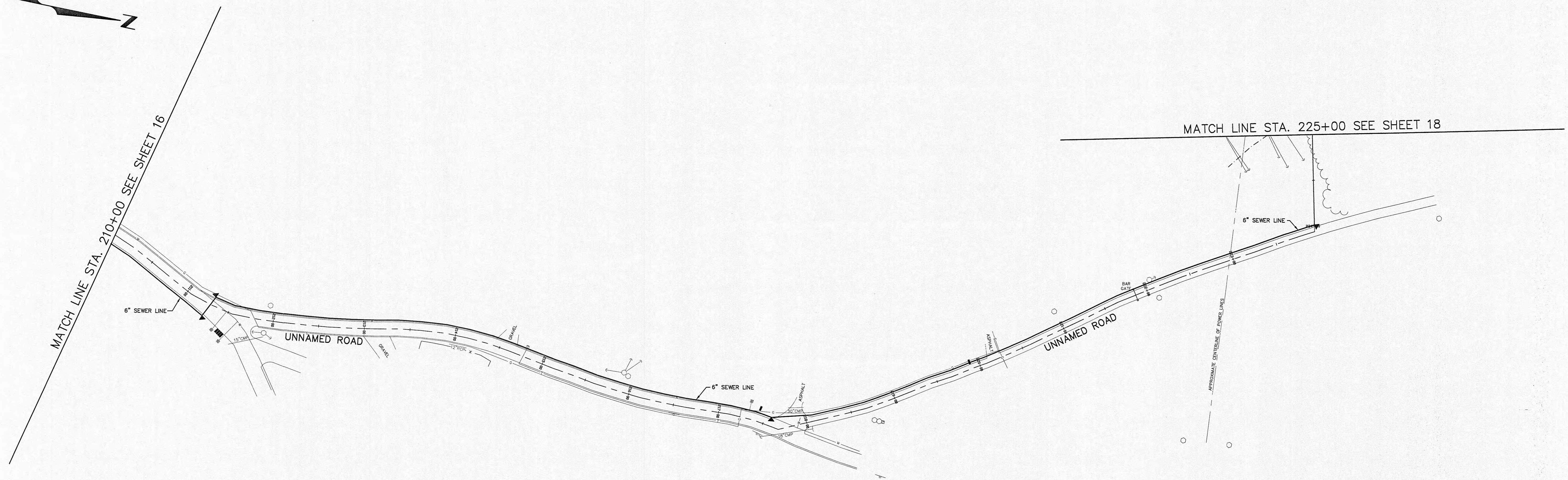
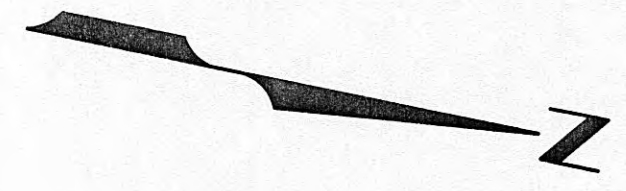
WATERLINE PROFILE IS DISCONTINUED AT THIS POINT

NOTE:  
 EXISTING UNDERGROUND UTILITIES SHOWN ON THIS SHEET, ARE  
 GAS EXCEPT AS NOTED: HARRIMAN UTILITY BOARD  
 WATER: HARRIMAN UTILITY BOARD  
 3" TRANSITE WATERLINE: SWAN POND UTILITY DISTRICT (NOT SHOWN)  
 SEWER: HARRIMAN UTILITY BOARD

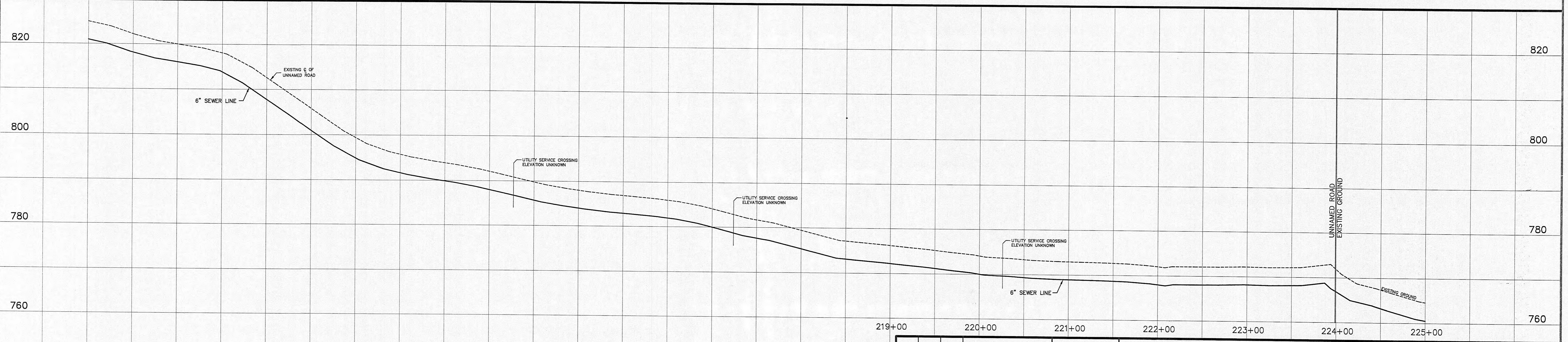


				10-19-94		<b>ETE CONSULTING ENGINEERING, INC.</b>		311 OAK RIDGE TURNPIKE OAK RIDGE, TN. 37830 (615)482-4053	
				SCALE HORIZ. 1"=50' VERT. 1"=10'		DRAWN BY DET		CLIENT SWAN HARBOUR L.P.	
				APPROVED PRW		PROJECT OFF-SITE UTILITIES FOR SWAN HARBOUR SUBDIVISION		TITLE WATER AND SEWER LINE LAYOUT	
SYM				DATE		BY		DESCRIPTION	
REVISIONS									
				JOB No. 94-472-1E		SHEET 16 OF 20			

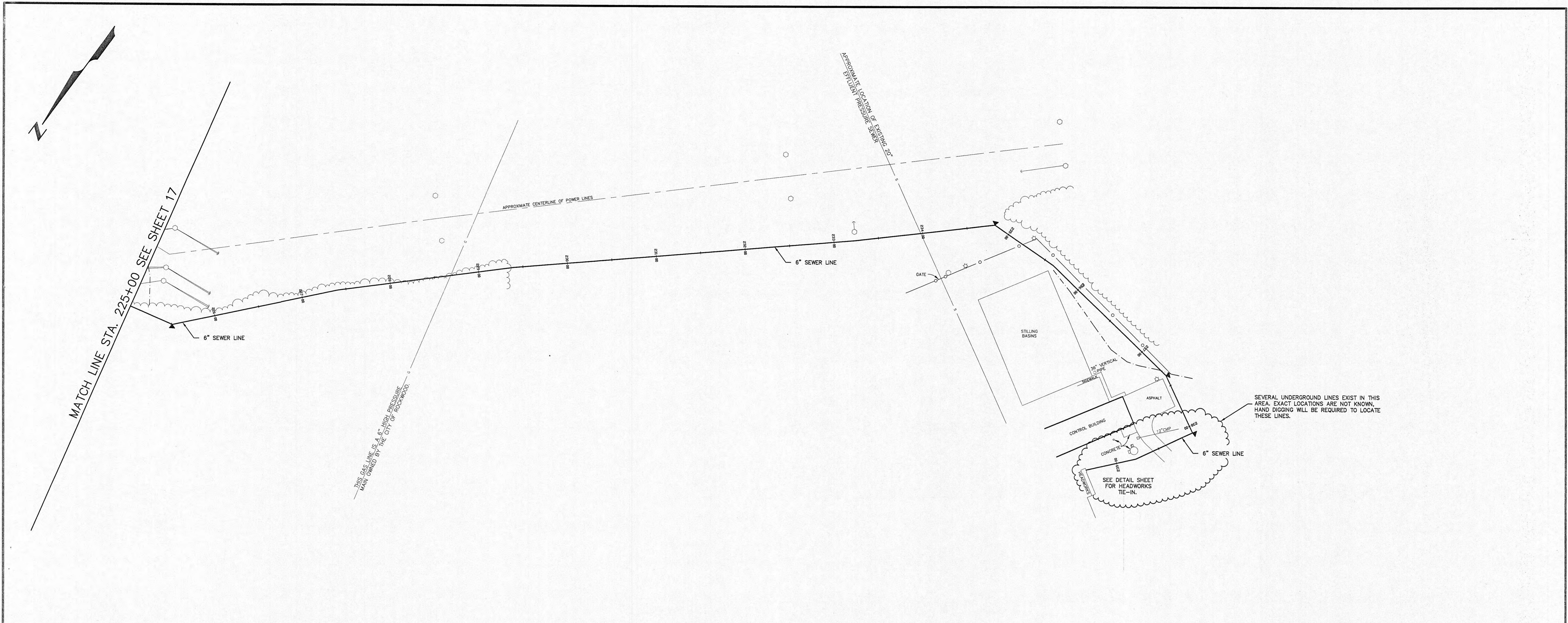
195+00 196+00 197+00 198+00 199+00 200+00 201+00 202+00 203+00 204+00 205+00 206+00 207+00 208+00 209+00 210+00



NOTE:  
 EXISTING UNDERGROUND UTILITIES SHOWN ON THIS SHEET, ARE  
 GAS: HARRIMAN UTILITY BOARD  
 WATER: HARRIMAN UTILITY BOARD  
 3" TRANSITE WATERLINE: SWAN POND UTILITY DISTRICT (NOT SHOWN)  
 TELEPHONE: SOUTH CENTRAL BELL



				10-19-94		<b>ETE CONSULTING ENGINEERING, INC.</b>		311 OAK RIDGE TURNPIKE OAK RIDGE, TN. 37830 (615)482-4053		JOB No. 94-472-1E	
				SCALE HORIZ. 1"=50' VERT. 1"=10'		DRAWN BY DET		CLIENT SWAN HARBOUR L.P.		PROJECT OFF-SITE UTILITIES FOR SWAN HARBOUR SUBDIVISION	
				APPROVED PRW		TITLE WATER AND SEWER LINE LAYOUT				SHEET 17 OF 20	
REVISIONS											

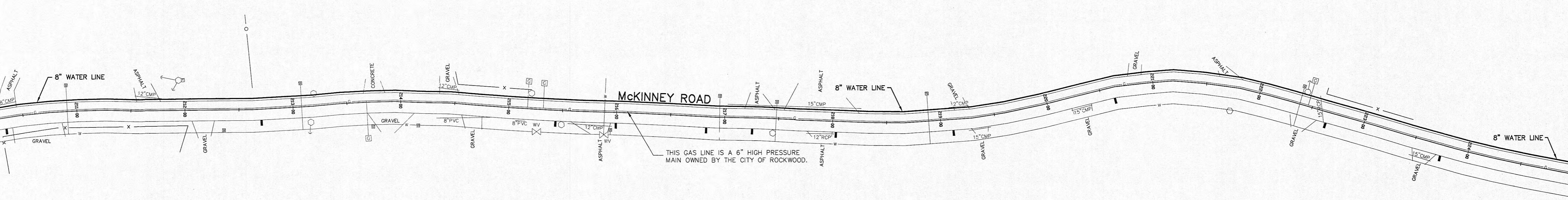


225+00	226+00	227+00	228+00	229+00	230+00	231+00	232+00	233+00	234+00	235+00	236+00	237+00	238+00	239+00
--------	--------	--------	--------	--------	--------	--------	--------	--------	--------	--------	--------	--------	--------	--------

10-19-94		<b>ETE CONSULTING ENGINEERING, INC.</b>		311 OAK RIDGE TURNPIKE OAK RIDGE, TN. 37830 (615)482-4053	
SCALE HORIZ. 1"=50'		DRAWN BY DET		CLIENT SWAN HARBOUR L.P.	
VERT. 1"=10'		APPROVED PRW		PROJECT OFF-SITE UTILITIES FOR SWAN HARBOUR SUBDIVISION	
SYM		DATE		TITLE WATER AND SEWER LINE LAYOUT	
BY		DESCRIPTION		JOB No. 94-472-1E	
REVISIONS				SHEET 18 OF 20	



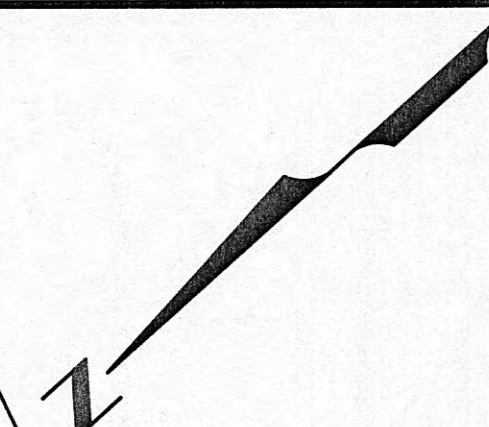
MATCH LINE STA. 210+00 SEE SHEET 16



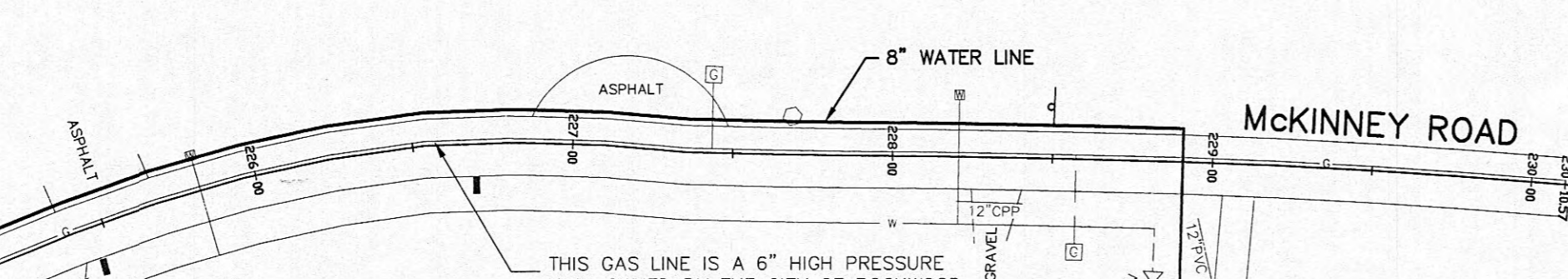
THIS GAS LINE IS A 6" HIGH PRESSURE MAIN OWNED BY THE CITY OF ROCKWOOD.

MATCH LINE STA. 225+00 SEE BELOW

NOTE:  
EXISTING UNDERGROUND UTILITIES SHOWN ON THIS SHEET, ARE:  
GAS: CITY OF ROCKWOOD  
WATER: HARRIMAN UTILITY BOARD  
TELEPHONE: SOUTH CENTRAL BELL

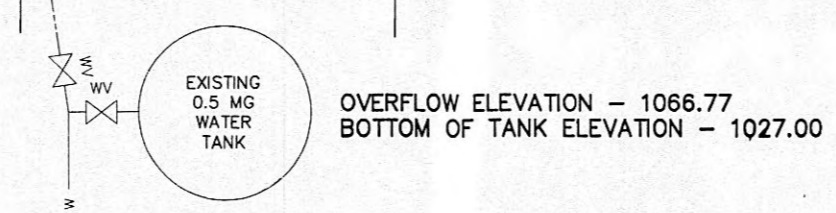


MATCH LINE STA. 225+00 SEE ABOVE



THIS GAS LINE IS A 6" HIGH PRESSURE MAIN OWNED BY THE CITY OF ROCKWOOD.

EXACT LOCATION OF METER AND TIE-IN WILL BE PROVIDED BY HARRIMAN UTILITY BOARD SWAN POND UTILITY DISTRICT TO INSTALL METER AND MAKE TIE-IN.



EXISTING 0.5 MG WATER TANK  
OVERFLOW ELEVATION - 1066.77  
BOTTOM OF TANK ELEVATION - 1027.00

		10-19-94		<b>ETE CONSULTING ENGINEERING, INC.</b>		311 OAK RIDGE TURNPIKE OAK RIDGE, TN. 37830 (615)482-4053	
		SCALE HORIZ. 1"=50' VERT. 1"=10'		CLIENT		PROJECT	
		DRAWN BY DET		SWAN HARBOUR L.P.		OFF-SITE UTILITIES FOR SWAN HARBOUR SUBDIVISION	
		APPROVED PRW		TITLE		WATER AND SEWER LINE LAYOUT	
REVISIONS				JOB No. 94-472-1E		SHEET 19 OF 20	

GENERAL NOTES

1. UTILITY CONTACTS  
 CITY OF ROCKWOOD - FRED MILLER 615-354-4221  
 HARRIMAN UTILITY BOARD - DICK HALL 615-882-3242  
 SWAN POND UTILITY DISTRICT - MICKEY BARGER 615-882-6108  
 SOUTH CENTRAL BELL - 1-800-351-1111
2. CONTRACTOR IS RESPONSIBLE FOR CONTACTING ALL APPROPRIATE UTILITIES PRIOR TO BEGINNING CONSTRUCTION. ALL UTILITIES SHOWN ARE FROM ABOVE GROUND EVIDENCE AND LOCAL KNOWLEDGE. ALL UTILITIES SHOULD BE LOCATED BY HAND DIGGING TO VERIFY ACTUAL LOCATIONS.
3. WATER LINE AND SEWER LINE ARE TO BE INSTALLED, TESTED, AND INSPECTED PER THE SPECIFICATIONS FOR THIS PROJECT, AND PER CITY, COUNTY, AND STATE REQUIREMENTS.
4. ELEVATIONS USED FOR THIS PROJECT ARE BASED ON TVA MONUMENTS.
5. THE LOCATIONS FOR THE PROPOSED WATER AND SEWER LINES ARE APPROXIMATE ONLY NOT FINAL. INTERFERENCES MAY BE ENCOUNTERED IN THE FIELD WHICH DEEM IT NECESSARY TO MOVE THE LINES. ANY MAJOR RELOCATIONS SHOULD BE BROUGHT TO THE ENGINEER'S ATTENTION FOR REVIEW.
6. THE CONTRACTOR IS RESPONSIBLE FOR RETURNING ALL DISTURBED AREAS BACK TO THEIR ORIGINAL CONDITIONS. (I.E. SEED AND MULCH AND REPLACE MAILBOXES, PAVEMENT ETC.) ALL BACKFILL UNDER ROADWAYS AND SHOULDERS TO BE CRUSHED STONE. PAVEMENT TYPE AND THICKNESS TO BE PER CITY OF HARRIMAN AND ROANE COUNTY ROAD SPECIFICATIONS.
7. PROTECT EXCAVATION BY SHORING, BRACING, SHEET PILING, UNDERPINNING OR OTHER METHODS REQUIRED TO PREVENT CAVE-IN OF LOOSE SOIL. PROTECTION SHALL BE IN ACCORDANCE WITH OSHA, 29CFR 1926.652.
  - A) TRENCHES MORE THAN 5 FEET IN DEPTH SHALL BE SHORED, LAID BACK TO A STABLE SLOPE, OR PROVIDE SOME OTHER EQUIVALENT MEANS OF PROTECTION.
  - B) REFER TO OSHA, 29 CFR 1926.652, APPENDICES A AND B, FOR THE MINIMUM REQUIREMENTS FOR SLOPES THAT ARE LAID BACK.
  - C) REFER TO OSHA, 29 CFR 1926.652, APPENDIX C, FOR THE MINIMUM REQUIREMENTS FOR SHORING AND BRACING.
  - D) TRENCHES LESS THAN 5 FEET IN DEPTH SHALL ALSO BE EFFECTIVELY PROTECTED WHEN EXAMINATION OF THE GROUND INDICATES HAZARDOUS GROUND MOVEMENT MAY BE EXPECTED.
  - E) EMPLOYEES REQUIRED TO BE IN TRENCHES 4 FEET OR MORE IN DEPTH SHALL HAVE AN ADEQUATE MEANS OF EXIT, SO AS TO REQUIRE NO MORE THAN 25 FEET OF LATERAL TRAVEL.

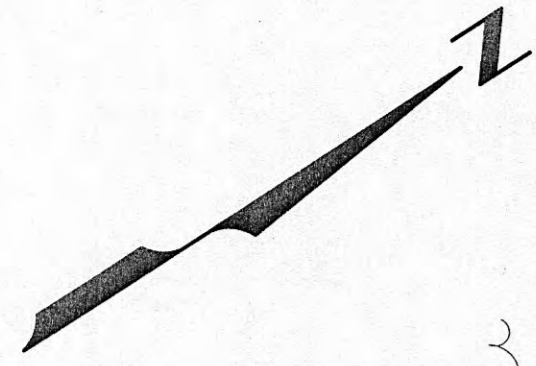
INDEX OF DRAWINGS

SHEET NO.	DRAWING TITLE
1	TITLE SHEET
2	INDEX AND GENERAL NOTES SHEET
3-19	WATER AND SEWER LINE LAYOUT SHEETS
20	DETAIL SHEET

LEGEND

○	UTILITY POLE W/ GUY WIRE
☆	LIGHT POLE
▶	FLOOD LIGHT
■	WATER METER
⊗	WATER VALVE
□	GAS METER
⊗	GAS VALVE
⊞	GAS REGULATOR
■	TELEPHONE BOX
■	MAIL BOX
†	SIGN
⊙	BUSH
~~~~~	TREE LINE
- - - - -	DITCH LINE
- x - - -	WIRE FENCE LINE
- o - - -	CHAIN LINK FENCE
- EF - - -	ELECTRIC FENCE
- w - - -	WATER LINE
- g - - -	GAS LINE
- t - - -	UNDERGROUND TELEPHONE LINE
- s - - -	20" FORCE MAIN SEWER
▽	TRUST BLOCK

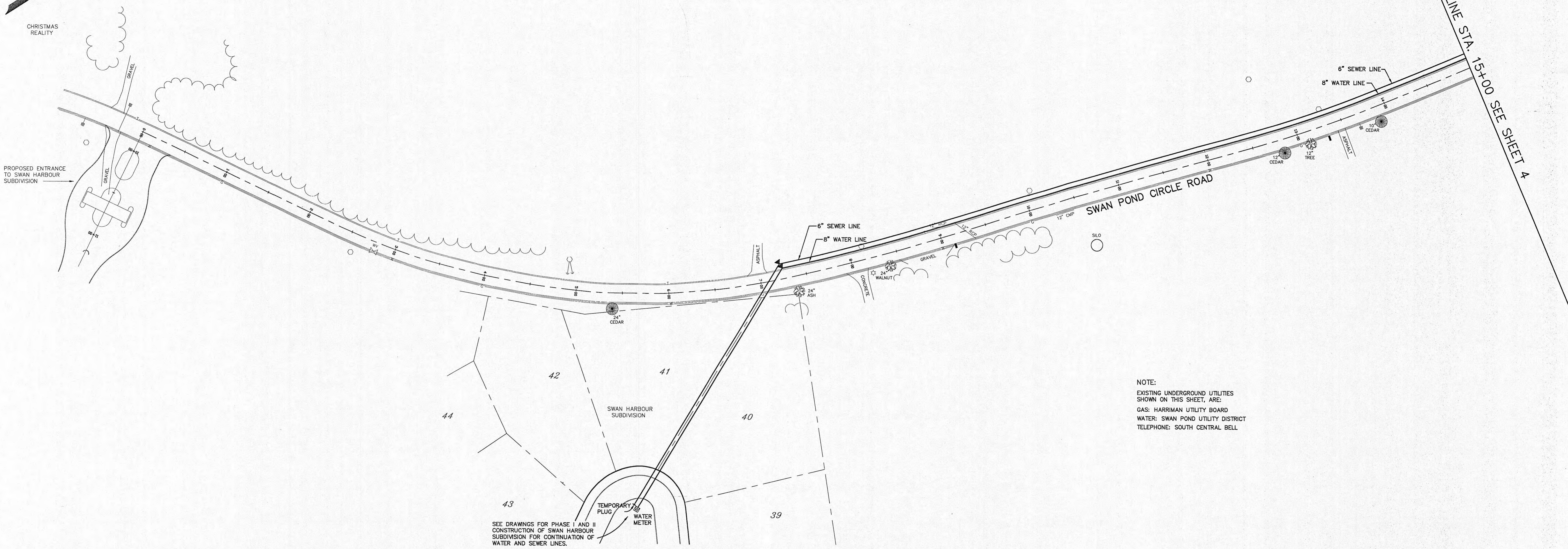
				10-19-94	<b>ETE CONSULTING ENGINEERING, INC.</b>			
				SCALE NONE	311 OAK RIDGE TURNPIKE OAK RIDGE, TN. 37830 (615)482-4053			
				DRAWN BY DET	CLIENT	PROJECT	TITLE	JOB No.
				APPROVED PRW	SWAN HARBOUR L.P.	OFF-SITE UTILITIES FOR SWAN HARBOUR SUBDIVISION	INDEX AND GENERAL NOTES SHEET	94-472-1E
REVISIONS								SHEET
								2 OF 20



CHRISTMAS REALITY

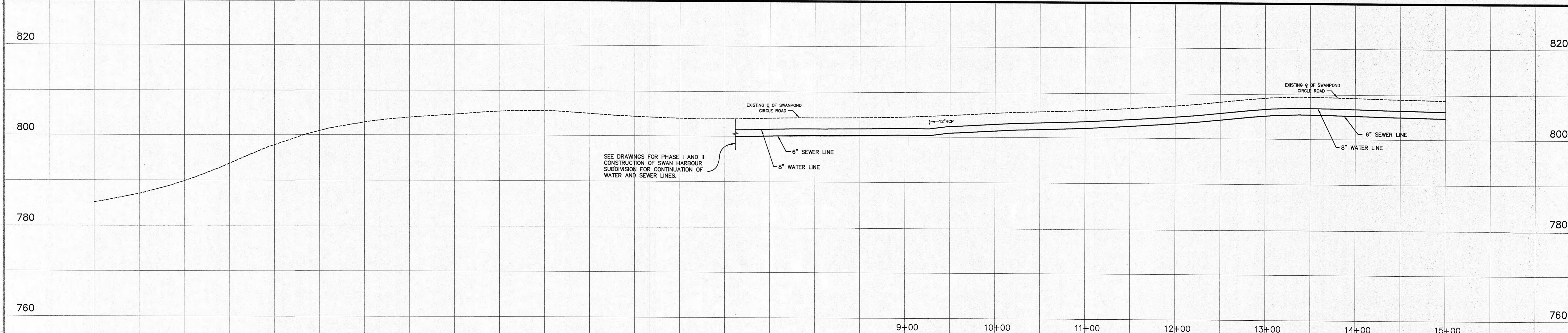
PROPOSED ENTRANCE TO SWAN HARBOUR SUBDIVISION

MATCH LINE STA. 15+00 SEE SHEET A



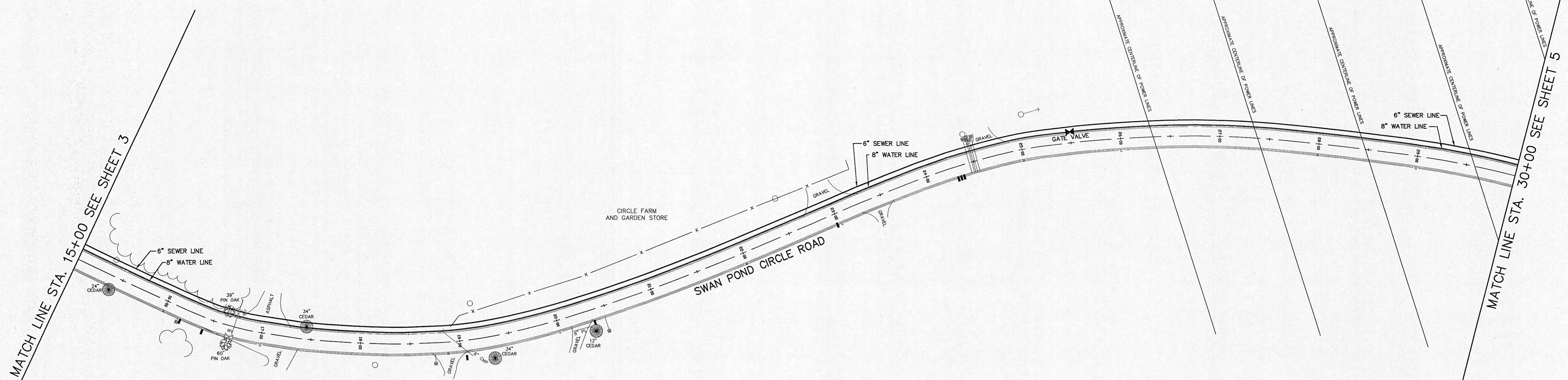
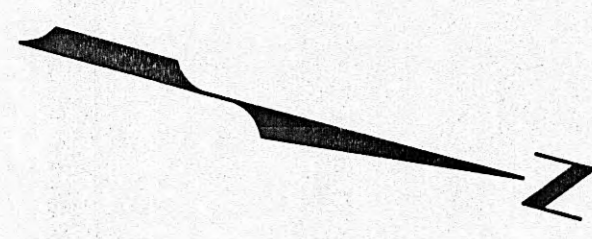
NOTE:  
 EXISTING UNDERGROUND UTILITIES SHOWN ON THIS SHEET, ARE:  
 GAS: HARRIMAN UTILITY BOARD  
 WATER: SWAN POND UTILITY DISTRICT  
 TELEPHONE: SOUTH CENTRAL BELL

SEE DRAWINGS FOR PHASE I AND II CONSTRUCTION OF SWAN HARBOUR SUBDIVISION FOR CONTINUATION OF WATER AND SEWER LINES.

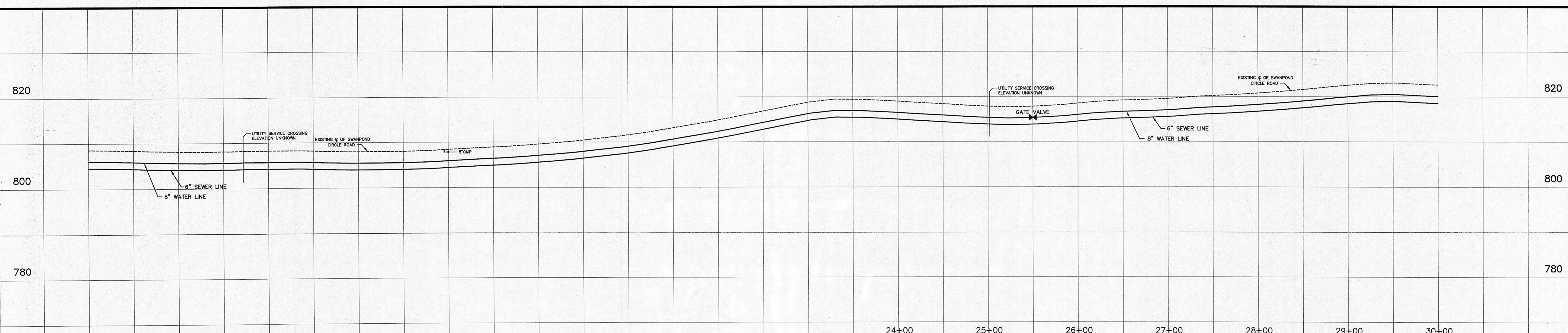


SEE DRAWINGS FOR PHASE I AND II CONSTRUCTION OF SWAN HARBOUR SUBDIVISION FOR CONTINUATION OF WATER AND SEWER LINES.

DATE		10-19-94		<b>ETE CONSULTING ENGINEERING, INC.</b> 311 OAK RIDGE TURNPIKE OAK RIDGE, TN. 37830 (615)482-4053		JOB No.		94-472-1E			
SCALE		HORIZ. 1"=50' VERT. 1"=10'				PROJECT		OFF-SITE UTILITIES FOR SWAN HARBOUR SUBDIVISION		SHEET	
DRAWN BY		DET		CLIENT		SWAN HARBOUR L.P.		TITLE		WATER AND SEWER LINE LAYOUT	
APPROVED		PRW		REVISIONS						3 OF 20	



NOTE:  
 EXISTING UNDERGROUND UTILITIES SHOWN ON THIS SHEET, ARE:  
 GAS: HARRIMAN UTILITY BOARD  
 WATER: SWAN POND UTILITY DISTRICT  
 TELEPHONE: SOUTH CENTRAL BELL

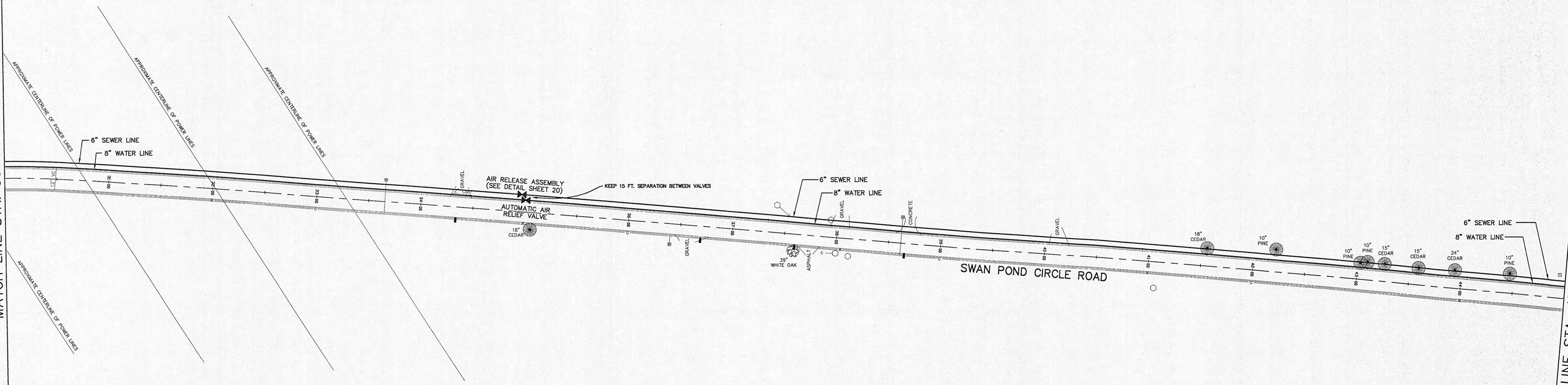


10-19-94		<b>ETE CONSULTING ENGINEERING, INC.</b>		311 OAK RIDGE TURNPIKE OAK RIDGE, TN. 37830 (615)482-4053	
SCALE HORIZ. 1"=50' VERT. 1"=10'		CLIENT	PROJECT	TITLE	JOB No.
DRAWN BY DET		SWAN HARBOUR L.P.	OFF-SITE UTILITIES FOR SWAN HARBOUR SUBDIVISION	WATER AND SEWER LINE LAYOUT	94-472-1E
APPROVED PRW					SHEET 4 OF 20
REVISIONS					
SYM	DATE	BY	DESCRIPTION		



MATCH LINE STA. 30+00 SEE SHEET 4

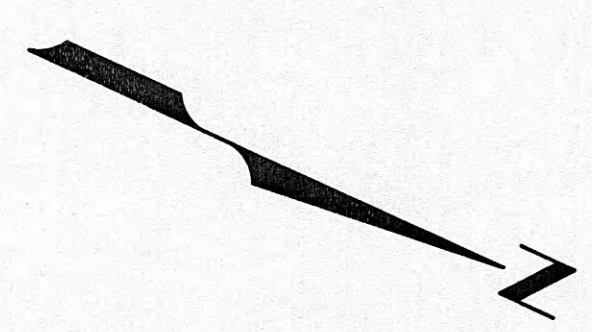
MATCH LINE STA. 45+00 SEE SHEET 6



NOTE:  
 EXISTING UNDERGROUND UTILITIES SHOWN ON THIS SHEET, ARE:  
 GAS: HARRIMAN UTILITY BOARD  
 WATER: SWAN POND UTILITY DISTRICT  
 TELEPHONE: SOUTH CENTRAL BELL

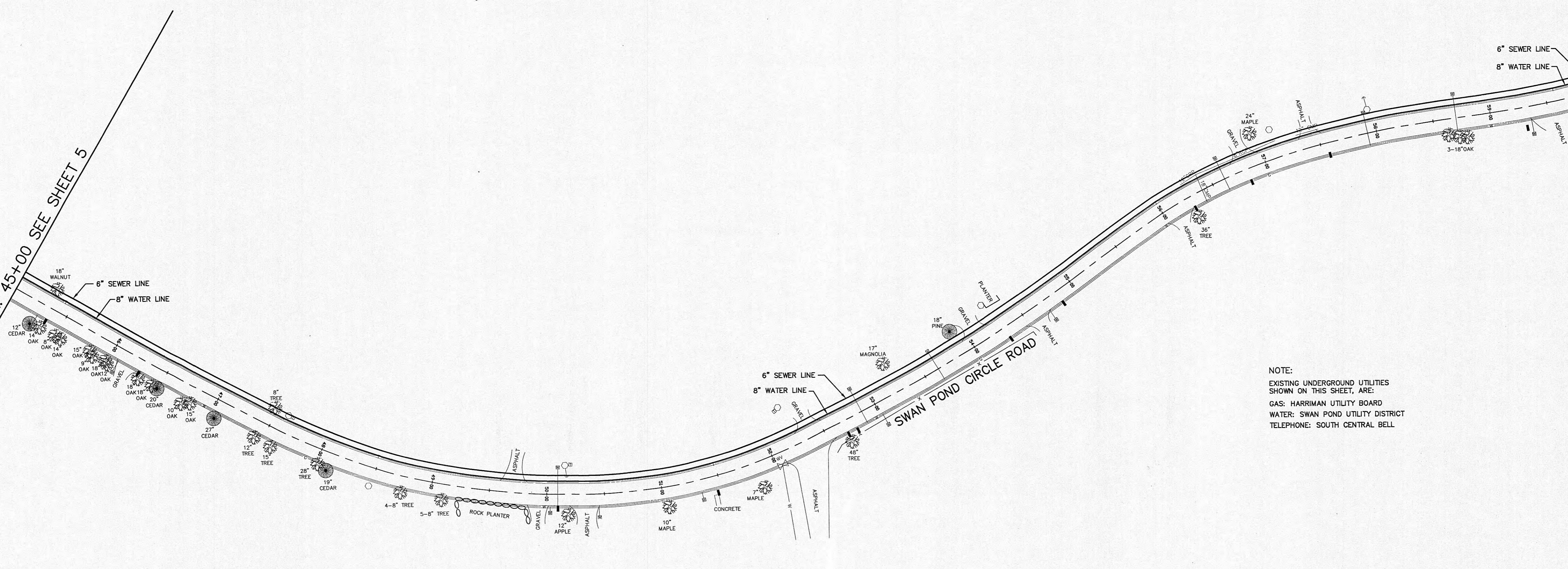


		10-19-94		<b>ETE CONSULTING ENGINEERING, INC.</b> 311 OAK RIDGE TURNPIKE OAK RIDGE, TN. 37830 (615)482-4053		PROJECT		TITLE		JOB No.	
		SCALE HORIZ. 1"=50' VERT. 1"=10'				CLIENT		OFF-SITE UTILITIES FOR SWAN HARBOUR SUBDIVISION		WATER AND SEWER LINE LAYOUT	
SYM		DATE		BY		DESCRIPTION		APPROVED		SHEET	
						REVISIONS		DET		5 OF 20	
								PRW			

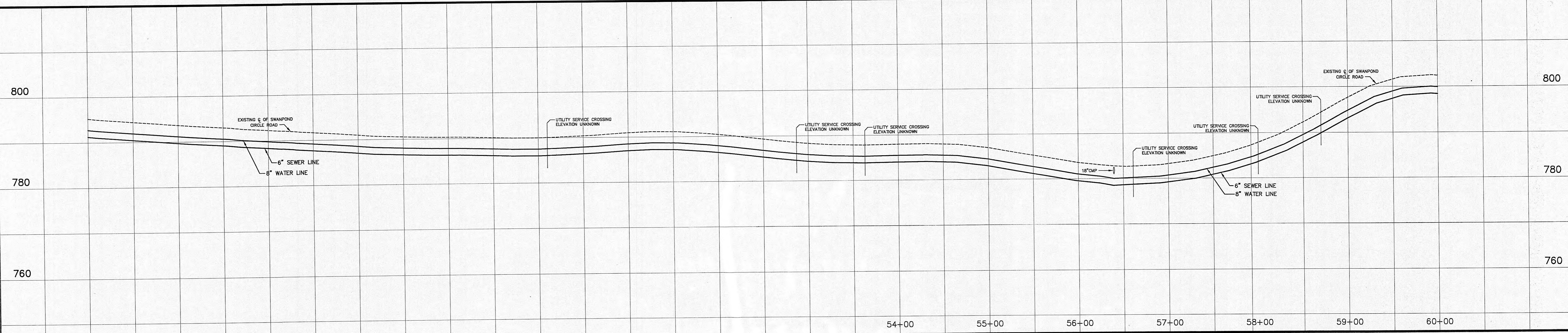


MATCH LINE STA. 45+00 SEE SHEET 5

MATCH LINE STA. 90+00 SEE SHEET 7



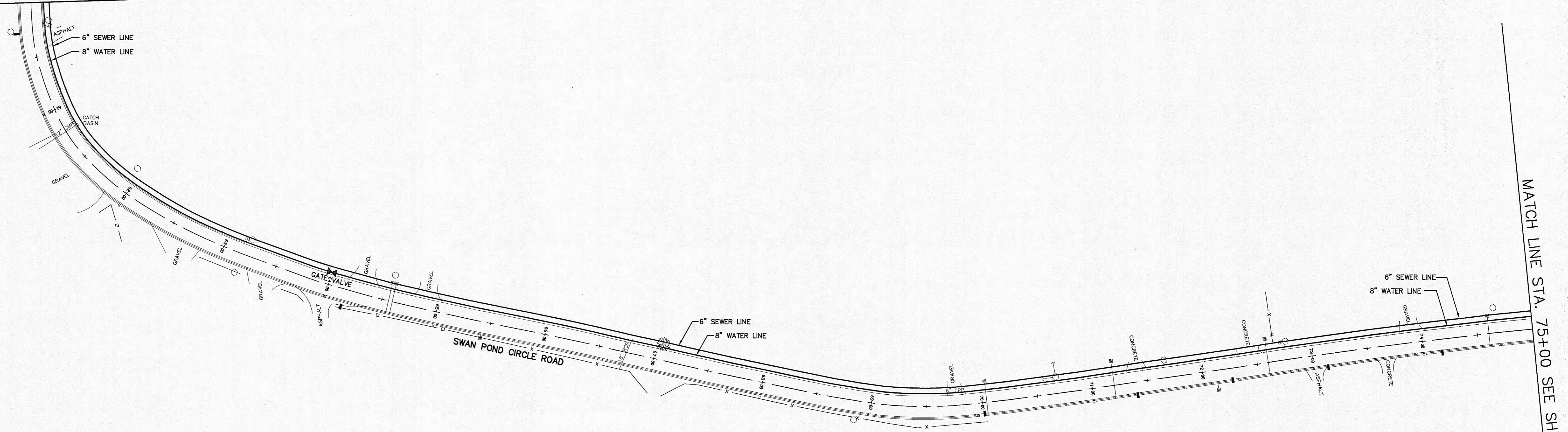
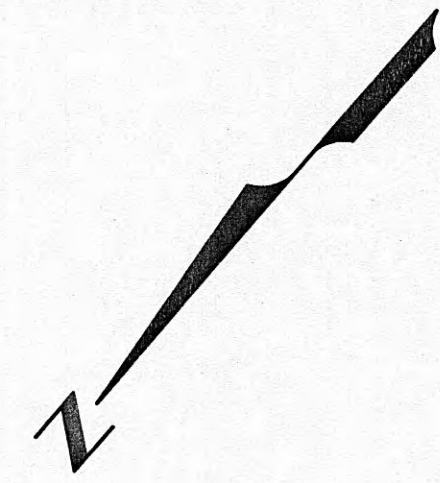
NOTE:  
 EXISTING UNDERGROUND UTILITIES SHOWN ON THIS SHEET, ARE:  
 GAS: HARRIMAN UTILITY BOARD  
 WATER: SWAN POND UTILITY DISTRICT  
 TELEPHONE: SOUTH CENTRAL BELL



10-19-94		<b>ETE CONSULTING ENGINEERING, INC.</b>		JOB No. 94-472-1E	
SCALE HORIZ. 1"=50'		311 OAK RIDGE TURNPIKE OAK RIDGE, TN. 37830 (615)482-4053		SHEET 6 OF 20	
VERT. 1"=10'		CLIENT SWAN HARBOUR L.P.		PROJECT OFF-SITE UTILITIES FOR SWAN HARBOUR SUBDIVISION	
DRAWN BY DET		TITLE WATER AND SEWER LINE LAYOUT			
APPROVED PRW					
REVISIONS					

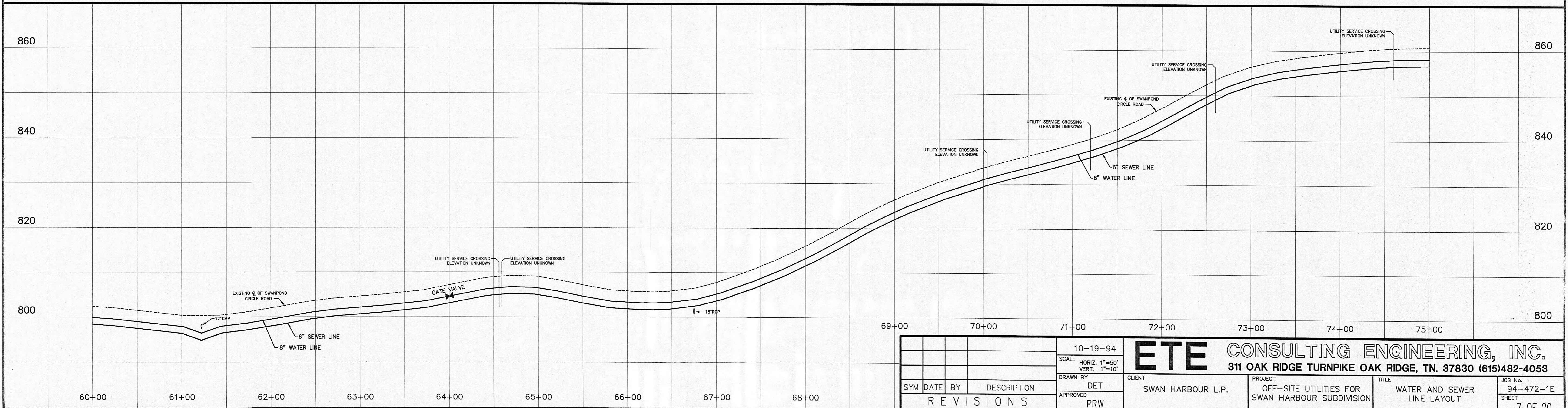
45+00	46+00	47+00	48+00	49+00	50+00	51+00	52+00	53+00	54+00	55+00	56+00	57+00	58+00	59+00	60+00
-------	-------	-------	-------	-------	-------	-------	-------	-------	-------	-------	-------	-------	-------	-------	-------

MATCH LINE STA. 60+00 SEE SHEET 6

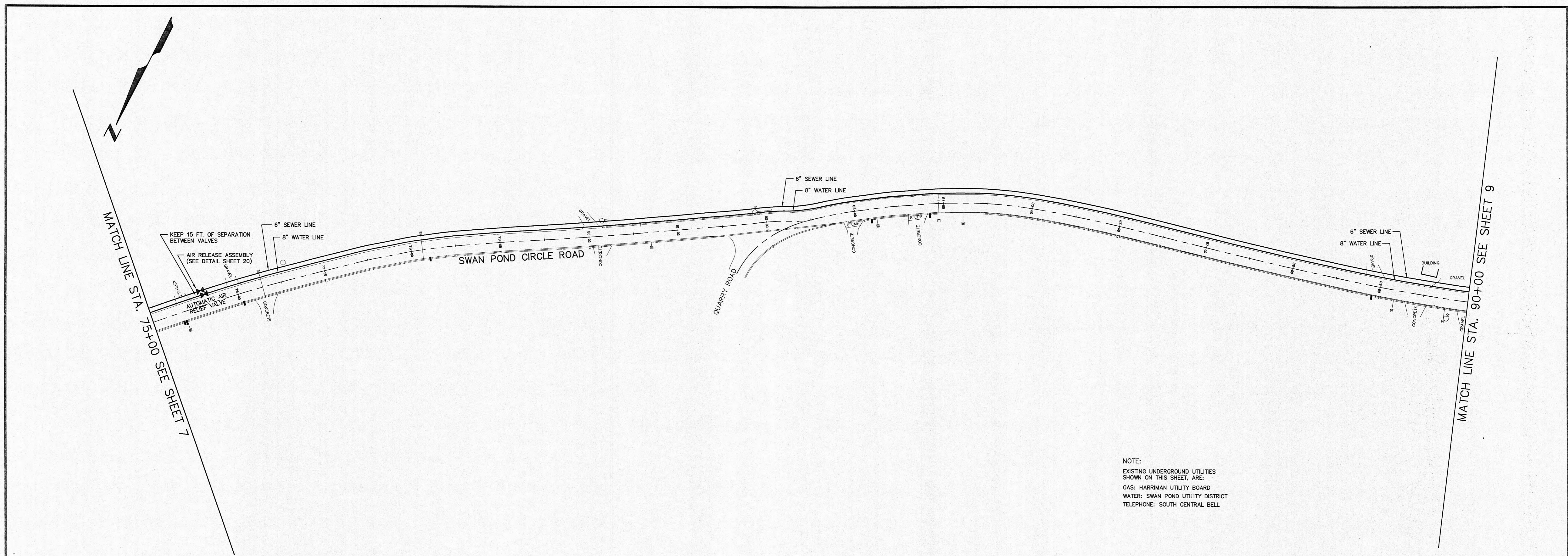


MATCH LINE STA. 75+00 SEE SHEET 8

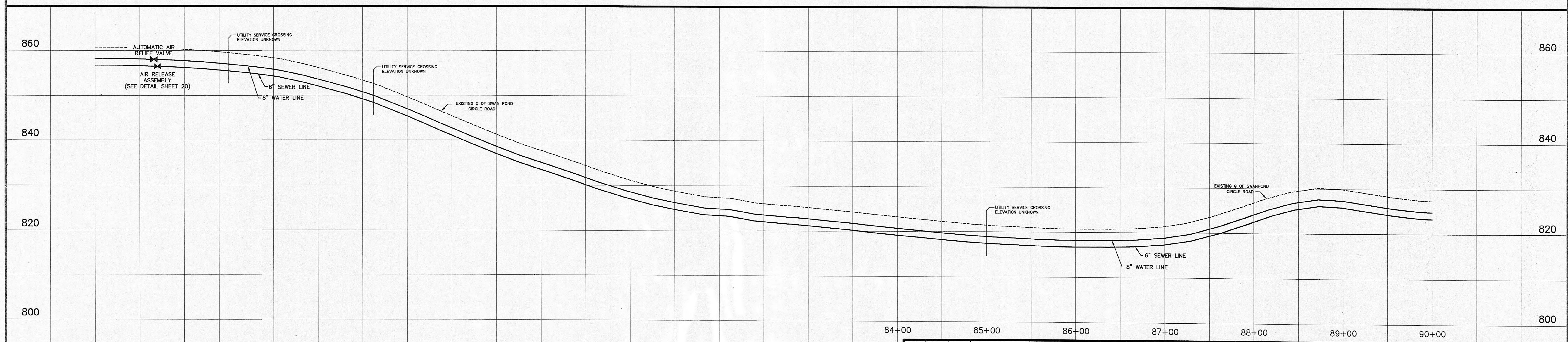
NOTE:  
 EXISTING UNDERGROUND UTILITIES  
 SHOWN ON THIS SHEET, ARE:  
 GAS: HARRIMAN UTILITY BOARD  
 WATER: SWAN POND UTILITY DISTRICT  
 TELEPHONE: SOUTH CENTRAL BELL



10-19-94		<b>ETE CONSULTING ENGINEERING, INC.</b>		311 OAK RIDGE TURNPIKE OAK RIDGE, TN. 37830 (615)482-4053	
SCALE HORIZ. 1"=50' VERT. 1"=10'		CLIENT SWAN HARBOUR L.P.		PROJECT OFF-SITE UTILITIES FOR SWAN HARBOUR SUBDIVISION	
DRAWN BY DET		APPROVED PRW		TITLE WATER AND SEWER LINE LAYOUT	
SYMBOL		DATE		BY	
DESCRIPTION		REVISIONS		JOB No. 94-472-1E SHEET 7 OF 20	



NOTE:  
 EXISTING UNDERGROUND UTILITIES SHOWN ON THIS SHEET, ARE:  
 GAS: HARRIMAN UTILITY BOARD  
 WATER: SWAN POND UTILITY DISTRICT  
 TELEPHONE: SOUTH CENTRAL BELL



10-19-94		<b>ETE CONSULTING ENGINEERING, INC.</b> 311 OAK RIDGE TURNPIKE OAK RIDGE, TN. 37830 (615)482-4053	CLIENT SWAN HARBOUR L.P.	PROJECT OFF-SITE UTILITIES FOR SWAN HARBOUR SUBDIVISION	TITLE WATER AND SEWER LINE LAYOUT	JOB No. 94-472-1E SHEET 8 OF 20
SCALE HORIZ. 1"=50' VERT. 1"=10'	DRAWN BY DET					
REVISIONS						
APPROVED PRW						