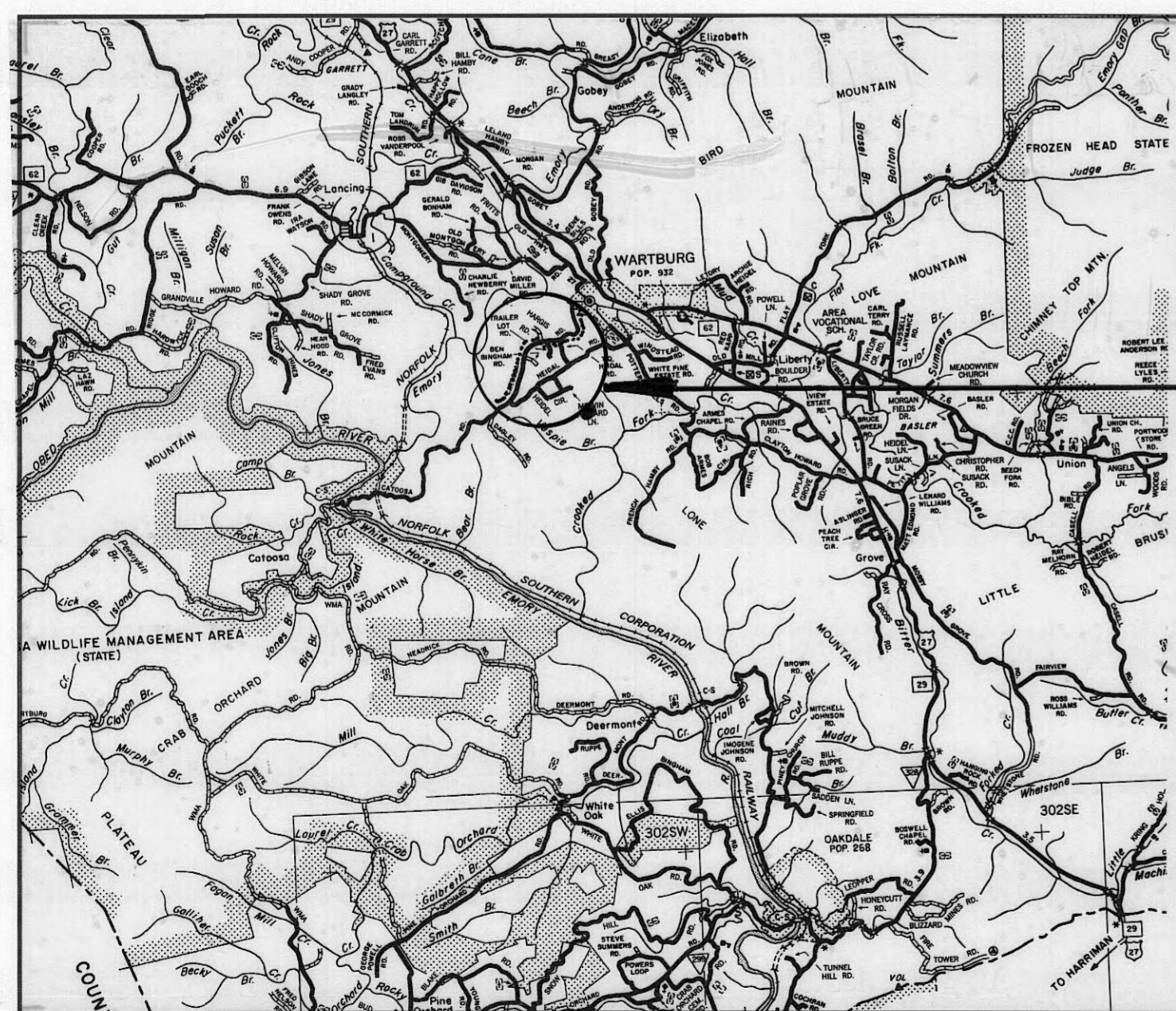


# PLATEAU UTILITY DISTRICT

## Morgan County, Tennessee

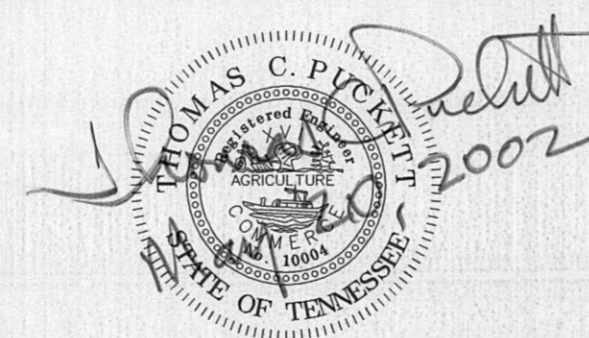
# CATOOSA ROAD WATER LINE REPLACEMENT 2002

LOCATION MAP



PROJECT AREA

Project Engineer



**SHEET INDEX**

KEY MAP -----	1
WATER LINE ADDITIONS (96 SW) -----	2
WATER LINE ADDITIONS (107 NW) -----	3
WATER LINE ADDITIONS (107 SW) -----	4

PLANS REVIEWED AND APPROVED BY PLATEAU UTILITY DISTRICT

*Ronnie Diden*  
RONNIE DIDEN, DISTRIBUTION SUPT.

6-3-2002  
DATE

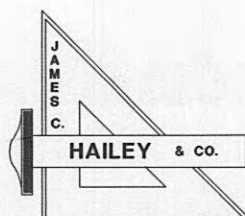
JAMES C. HAILEY & CO.

MAY 05 2003

MAILED TO ARCHIVE

SET NUMBER \_\_\_\_\_

JCH PROJECT NO. 01213



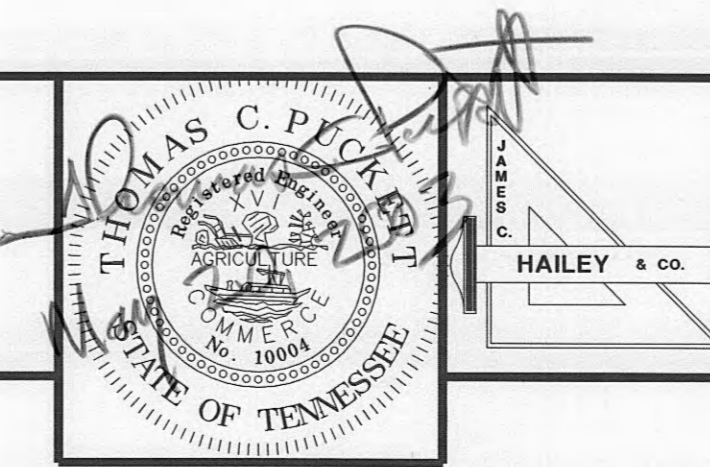
**JAMES C. HAILEY & CO. 2622 OLD LEBANON ROAD - SUITE 200 NASHVILLE, TENNESSEE**



**GENERAL NOTES:**

1. CONTRACTOR SHALL BE RESPONSIBLE FOR LOCATION OF ALL UTILITIES AND CONSIDERATION OF SUCH IN BIDDING THE PROJECT. CONTRACTOR SHALL COORDINATE WITH APPROPRIATE UTILITY (WATER, TELEPHONE, ELECTRIC, ETC.) PRIOR TO EXCAVATION TO AVOID EXISTING UTILITIES AND TO ALLOW FOR POSSIBLE INSTALLATION MODIFICATIONS. CONTRACTOR SHALL BE RESPONSIBLE FOR ALL DAMAGE TO ANY UTILITIES.
2. CONTRACTOR SHALL CONFORM TO ALL REQUIREMENTS OF THE MORGAN COUNTY HIGHWAY COMMISSION REGULATIONS AND PERMITS:
  - a. CONTRACTOR SHALL READ AND BE FAMILIAR WITH THE LATEST EDITION OF THE MORGAN COUNTY HIGHWAY REGULATIONS.
  - b. CONTRACTOR SHALL BE RESPONSIBLE FOR THE MAINTENANCE OF EROSION/SEDIMENT CONTROLS.
  - c. CONTRACTOR SHALL PROVIDE PROPER WARNING DEVICES (I.e. LIGHTS, BARRICADES, SIGNS, ETC.) TO ALERT THE TRAVELING PUBLIC OF WORK IN THE AREA.
3. WATER LINES SHALL BE INSTALLED ON PRIVATE PROPERTY AS SHOWN ON PLANS OR WHEREVER THE DISTRICT CAN OBTAIN EASEMENTS. LOCATION IN GENERAL SHALL BE APPROXIMATELY TEN FEET (10') BEHIND THE FENCE ROW OR PROPERTY LINE. DEVIATION SHALL BE MADE AS DIRECTED TO AVOID STRUCTURES OR OBSTRUCTIONS.
4. WHERE WATERLINES ARE NOTED ON PLANS TO BE INSTALLED ON ROAD RIGHT-OF-WAY, A 4'-0" MINIMUM CLEARANCE BETWEEN THE EDGE OF PAVEMENT AND THE EDGE OF TRENCH SHALL BE MAINTAINED. IF AN OBSTRUCTION IS ENCOUNTERED, CONTRACTOR MAY, WITH RESIDENT INSPECTOR'S APPROVAL, CLOSE TO A 2'-0" CLEARANCE TO CLEAR OBSTACLE. AT NO TIME WILL THE CLEARANCE BE LESS THAN 2'-0" WITHOUT THE PRIOR APPROVAL OF THE COUNTY HIGHWAY SUPERINTENDENT.
5. CONTRACTOR TO FIELD VERIFY CASING AND BORE LENGTHS AT ROAD CROSSINGS. ALL WATERLINES SHALL HAVE A MINIMUM COVER OF THIRTY-SIX INCHES (36") UNDER DITCHES AND FORTY-EIGHT INCHES (48") UNDER COUNTY ROADWAYS.
6. CONTRACTOR SHALL ATTEMPT TO BORE MAIN LINE ON ALL COUNTY ROADS TO THE SATISFACTION OF THE ENGINEER, DISTRICT AND HIGHWAY SUPERINTENDENT. CONTRACTOR SHALL OPEN CUT MAIN LINE CROSSING ONLY IF BORING IS UNSUCCESSFUL AND APPROVED BY THE WILLIAMSON COUNTY HIGHWAY SUPERINTENDENT.
7. ALL WATERLINES SHALL HAVE A MINIMUM OF THIRTY INCHES (30") OF COVER UNLESS OTHERWISE NOTED. TRENCH WIDTH IN SOIL SHALL BE HELD TO A MINIMUM CONSISTENT WITH PROPER WORKING SPACE FOR ASSEMBLY OF PIPE.
8. THE PLANS SHOW DESIRED LOCATION OF THE WATER LINE, VALVES AND APPURTENANCES. SCHEMATIC AND GRAPHIC SYMBOLS SHOWN ON PLANS ARE USED TO INDICATE GENERAL LOCATION BUT ARE NOT DRAWN TO SCALE. ADJUSTMENTS IN THE FIELD ARE TO BE MADE BASED ON EASEMENTS, ROAD DITCHES, CULVERTS, GROUND PROFILE OR OTHER OBSTRUCTIONS, WHICH WOULD IMPROVE LAYING CONDITIONS OR DECREASE INCONVENIENCE TO PROPERTY OWNERS.
9. CONTRACTOR SHALL BE RESPONSIBLE FOR STAKING WATER LINE ROUTE PRIOR TO TRENCHING. AFTER THE PROPOSED LOCATION OF THE PIPELINE HAS BEEN ESTABLISHED AND APPROVED, THE CONTRACTOR SHALL PROVIDE SUFFICIENT STAKES AND LINES TO GUIDE THE EQUIPMENT OPERATORS AND TO ASSURE PROPER TRENCHING ALIGNMENT.
10. STATION NUMBERS SHOWN ON PLANS ARE APPROXIMATE AND FOR REFERENCE ONLY. THE LOCATION OF VALVES, TEES, END OF LINES, APPURTENANCES, ETC., SHALL BE AS DIRECTED IN THE FIELD BY ENGINEER OR DISTRICT. CONTRACTOR SHALL OBTAIN APPROVAL OF OWNER FOR EXACT LOCATION OF ALL FIRE HYDRANTS.
11. CONTRACTOR SHALL BE RESPONSIBLE FOR ALL REPAIRS AND/OR REPLACEMENT OF EXISTING DRAINAGE FACILITIES, ROADS, DRIVES, DRAINS, STRUCTURES, YARDS, FENCES, MAILBOXES, ETC., DISTURBED DURING CONSTRUCTION. NO ADDITIONAL COMPENSATION WILL BE MADE FOR THIS WORK.
12. CRUSHED STONE BACKFILL SHALL BE USED WHERE LINES ARE LOCATED UNDER EXISTING AND PROPOSED DRIVING SURFACES (ROADS, DRIVEWAYS, ETC.).
13. METER LOCATIONS SHALL BE AS DIRECTED IN FIELD BY ENGINEER OR DISTRICT.
14. ALL SERVICE LINES ON PAVED ROADS ARE TO BE INSTALLED BY BORE & JACK. NO OPEN CUTTING WILL BE ALLOWED WITHOUT PRIOR APPROVAL OF THE COUNTY HIGHWAY SUPERINTENDENT. SERVICE PIPE SHALL BE CONTINUOUS FROM MAIN TO METER YOKE. ALL SERVICE CONNECTIONS SHALL BE TESTED AND DISINFECTED WITH WATER MAINS.
15. CONTRACTOR TO LOCATE AND VERIFY EXISTING FACILITIES AT CONNECTIONS OR TIE-INS PRIOR TO COMMENCEMENT OF CONSTRUCTION OF NEW FACILITIES TO ALLOW FOR POSSIBLE MODIFICATIONS. ADJUSTMENTS WILL BE MADE ACCORDINGLY WITH APPROVAL OF THE ENGINEER.
16. SOIL EROSION: THE CONTRACTOR SHALL ADHERE TO ALL MEASURES AS REQUIRED BY FEDERAL, STATE AND LOCAL STANDARDS DURING THE LIFE OF THE PROJECT TO CONTROL EROSION AND WATER POLLUTION.
17. CONTRACTOR SHALL OBTAIN APPROVAL FROM TENNESSEE DEPARTMENT OF TRANSPORTATION (TDOT) PRIOR TO START OF CONSTRUCTION OF HIGHWAY CROSSING AND SHALL CONFORM TO ALL REQUIREMENTS OF TDOT PERMIT AND STANDARDS. SAFETY PROCEDURES AND ALL CONSTRUCTION ACTIVITIES SHALL BE IN ACCORDANCE WITH TDOT STANDARDS AND CONDITIONS.
18. THE CONTRACTOR SHALL SCHEDULE AND COORDINATE THE WORK WITH TDOT AND THE UTILITY DISTRICT. A CONSTRUCTION SCHEDULE SHALL BE PREPARED BY THE CONTRACTOR AND SUBMITTED TO THE UTILITY DISTRICT FOR APPROVAL. PARTICULAR ATTENTION SHALL BE GIVEN TO THE TIE-IN.
19. CONTRACTOR SHALL VERIFY THE LOCATION AND ELEVATIONS OF PROPOSED FACILITIES AND ADJUST WATER LINE FACILITIES AS APPROVED TDOT AND THE ENGINEER.

LLB c:\cadd\morgant\map\09c.dwg



PLATEAU UTILITY DISTRICT Morgan County, Tennessee			WATER LINE ADDITIONS CATOOSA ROAD		
DESIGN	DRAWN	CHECKED	DATE	SCALE	PROJECT NO.
TCP	LLB	TCP	MAY 2002	1" = 200'	01213

CAD  
KQ



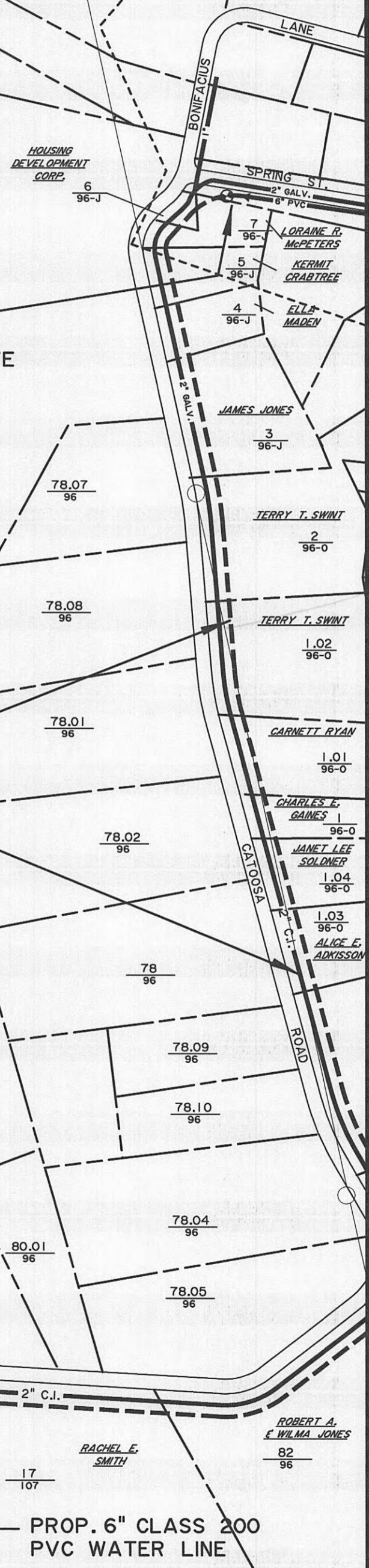
REMOVE PLUG AND  
CONNECT TO EXISTING  
6" WATER LINE AT VALVE

PROP. 6" CLASS 200  
PVC WATER LINE

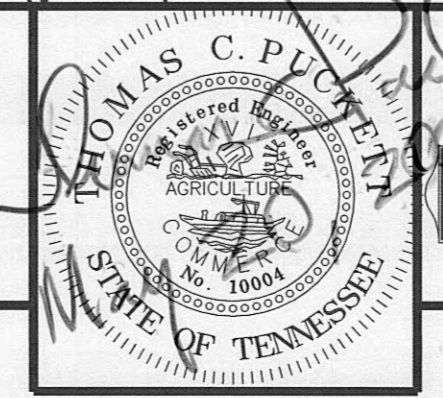
EXIST. 2" WATER LINE  
TO BE ABANDONED

EXIST. 2" WATER LINE  
TO BE ABANDONED

PROP. 6" CLASS 200  
PVC WATER LINE



96 NW	96 NE		
96 SW	96 SE	2	3
107 NW	107 NE	4	



HAILEY & CO.

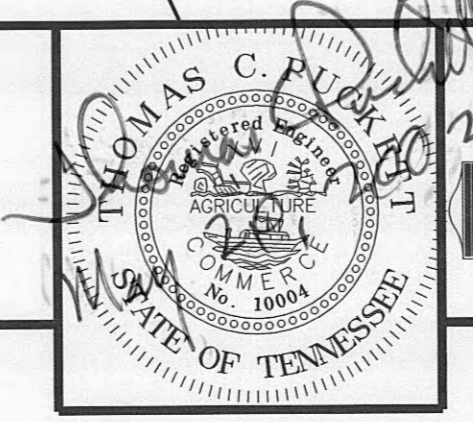
PLATEAU UTILITY DISTRICT Morgan County, Tennessee			WATER LINE ADDITIONS CATOOSA ROAD			SHEET 2
DESIGN TCP	DRAWN LLB	CHECKED TCP	DATE MAY 2002	SCALE 1" = 200'	PROJECT NO. 01213	96 SW

CAD  
KLO



PROP. 6" CLASS 200  
 PVC WATER LINE  
 EXIST. 2" WATER LINE  
 TO BE ABANDONED

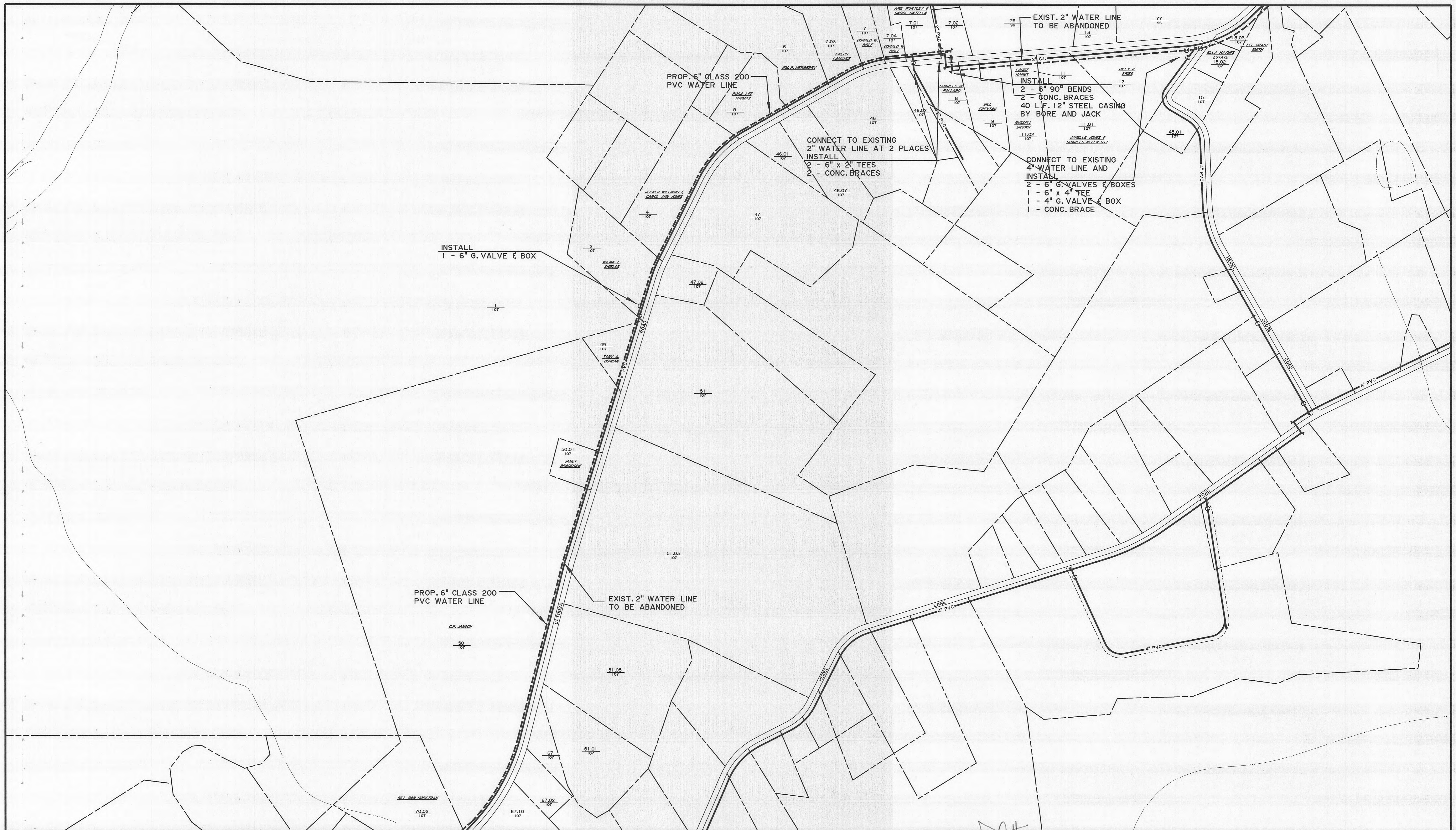
96 NW	96 NE	97 NW		
96 SW	96 SE	97 SW	2	3
107 NW	107 NE	108 NW	4	



HAILEY & CO.

PLATEAU UTILITY DISTRICT Morgan County, Tennessee			WATER LINE ADDITIONS CATOOSA ROAD			SHEET <b>3</b>
DESIGN	DRAWN	CHECKED	DATE	SCALE	PROJECT NO.	
TCP	LLB	TCP	MAY 2002	1" = 200'	01213	96 SE

CAD RQ



EXIST. 2" WATER LINE TO BE ABANDONED

INSTALL  
 2 - 6" 90° BENDS  
 2 - 6" CONC. BRACES  
 40 L.F. 12" STEEL CASING BY BORE AND JACK

CONNECT TO EXISTING 4" WATER LINE AND INSTALL  
 2 - 6" G. VALVES & BOXES  
 1 - 6" x 4" TEE  
 1 - 4" G. VALVE & BOX  
 1 - CONC. BRACE

PROP. 6" CLASS 200 PVC WATER LINE

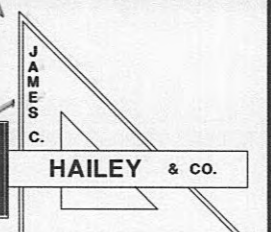
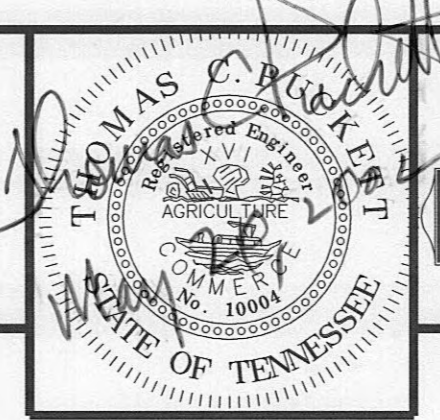
CONNECT TO EXISTING 2" WATER LINE AT 2 PLACES  
 INSTALL  
 2 - 6" x 2" TEES  
 2 - CONC. BRACES

INSTALL  
 1 - 6" G. VALVE & BOX

PROP. 6" CLASS 200 PVC WATER LINE

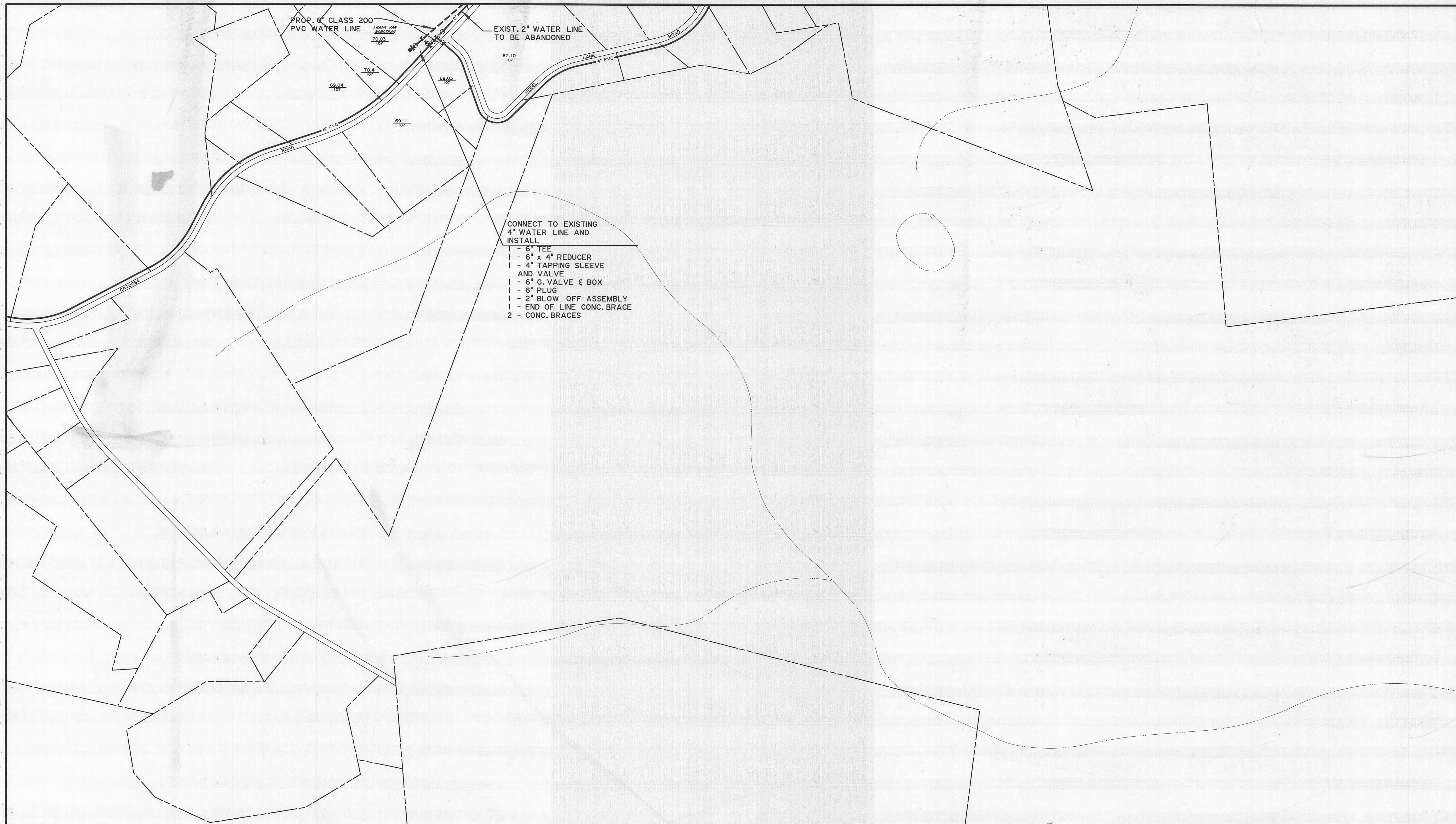
EXIST. 2" WATER LINE TO BE ABANDONED

96 SW	96 SE	2	3
107 NW	107 NE	4	
107 SW	107 SE	5	



PLATEAU UTILITY DISTRICT Morgan County, Tennessee			WATER LINE ADDITIONS CATOOSA ROAD			SHEET <b>4</b> 107 NW
DESIGN TCP	DRAWN LLB	CHECKED TCP	DATE MAY 2002	SCALE 1" = 200'	PROJECT NO. 01213	

CMD KH

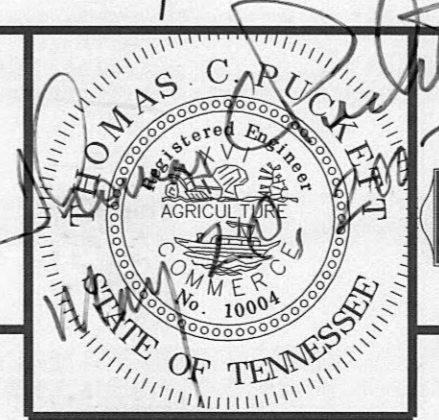


PROP. 6" CLASS 200  
PVC WATER LINE

EXIST. 2" WATER LINE  
TO BE ABANDONED

- CONNECT TO EXISTING  
4" WATER LINE AND  
INSTALL
- 1 - 6" TEE
  - 1 - 6" x 4" REDUCER
  - 1 - 4" TAPPING SLEEVE  
AND VALVE
  - 1 - 6" G. VALVE & BOX
  - 1 - 6" PLUG
  - 1 - 2" BLOW OFF ASSEMBLY
  - 1 - END OF LINE CONC. BRACE
  - 2 - CONC. BRACES

	107 NW	107 NE		4	
	107 SW	107 SE		5	
	117 NW	117 NE			



HAILEY & CO.

PLATEAU UTILITY DISTRICT Morgan County, Tennessee			WATER LINE ADDITIONS CATOOSA ROAD			SHEET 5
DESIGN	DRAWN	CHECKED	DATE	SCALE	PROJECT NO.	
TCP	LLB	TCP	MAY 2002	1" = 200'	01213	107 SW

CAD KQ