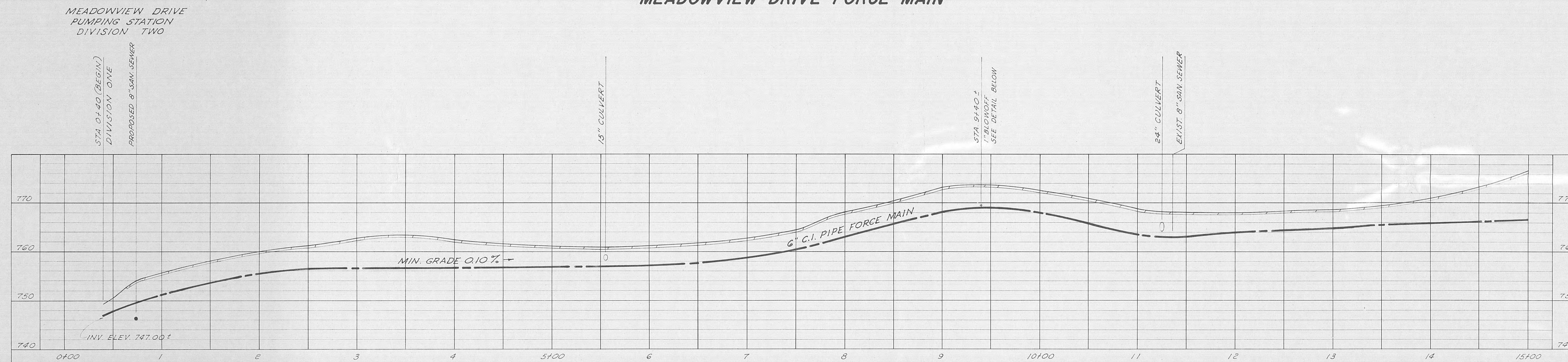
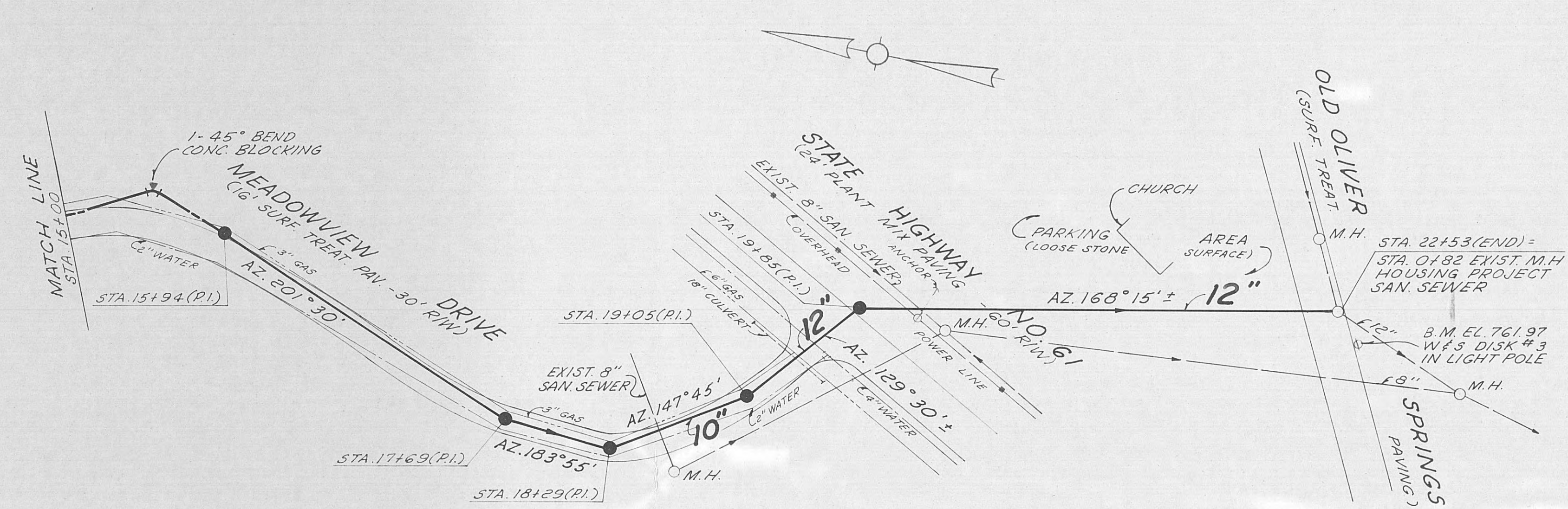


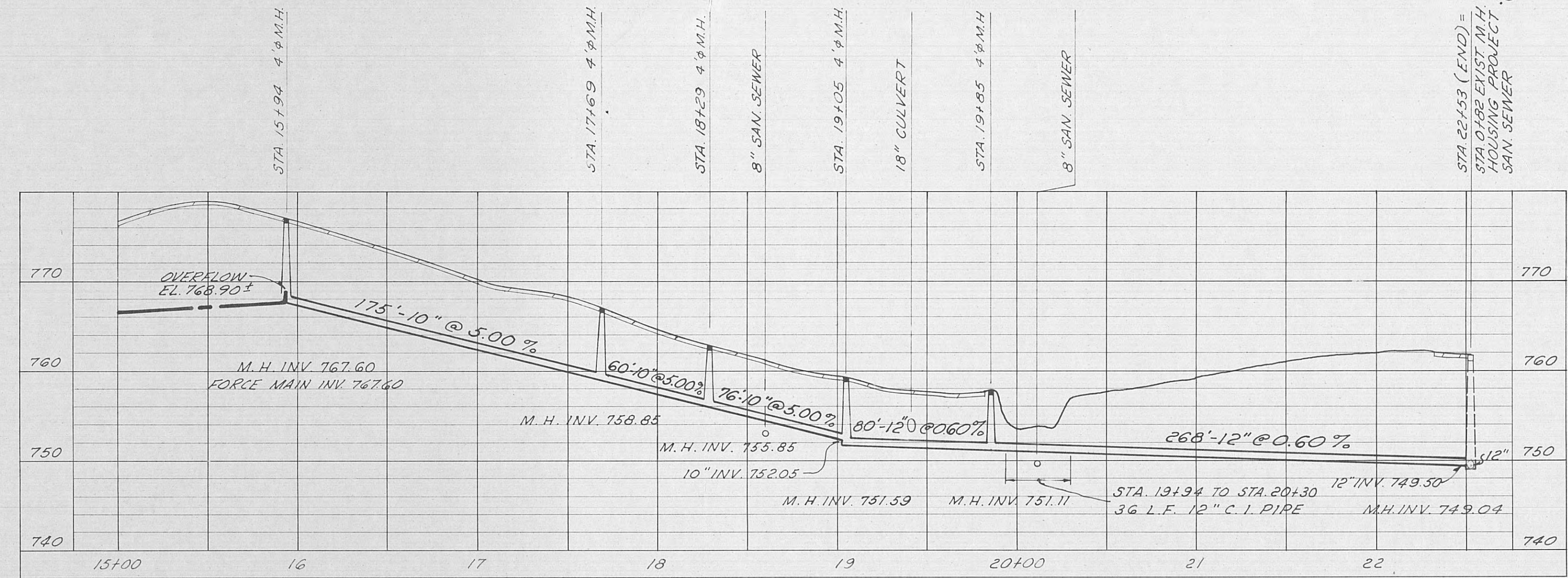
MEADOWVIEW DRIVE FORCE MAIN



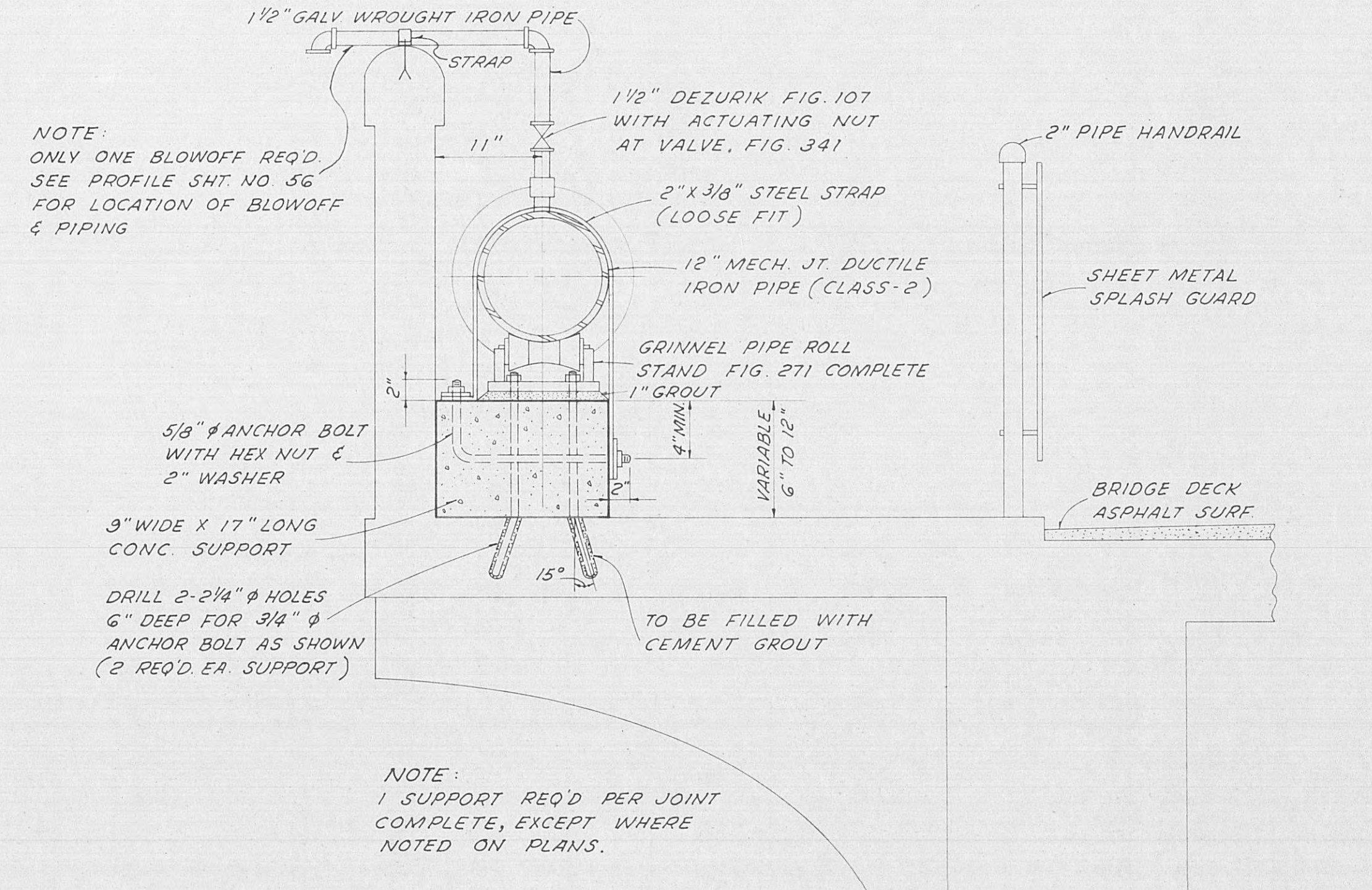
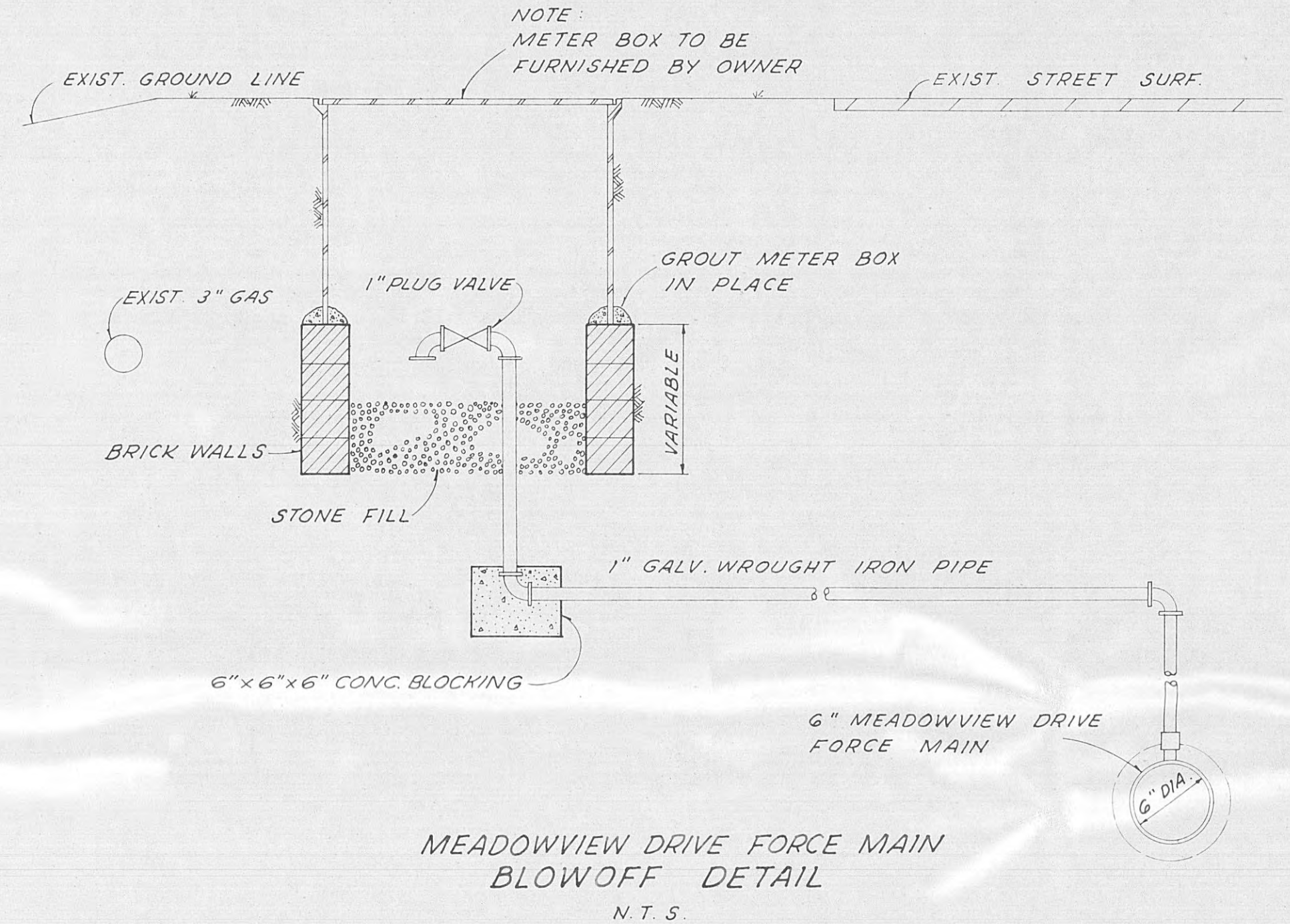
MEADOWVIEW DRIVE FORCE MAIN



MEADOWVIEW DRIVE FORCE MAIN AND GRAVITY SEWER



MEADOWVIEW DRIVE FORCE MAIN AND GRAVITY SEWER



USPHS PROJECT
No. WPC - TENN. - 166
DIVISION ONE

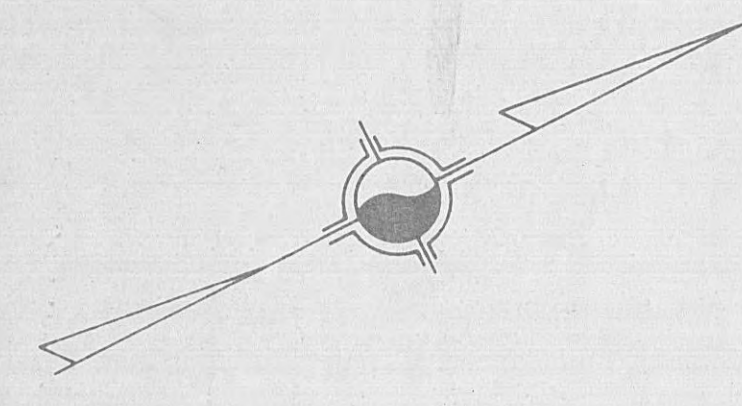
CITY OF HARRIMAN, TENNESSEE
SEWERAGE SYSTEM IMPROVEMENTS

MEADOWVIEW DRIVE FORCE MAIN
AND GRAVITY SEWER
(BEGIN) STA. 0+40 TO STA. 22+53 (END)

SCALE
HORIZ. 1"=40'
VERT. 1"=10'
DATE: JAN, 1966

WIEDEMAN AND SINGLETON
ENGINEERS
ATLANTA GEORGIA

SHEET
57
OF 59



NOTE:
 THE FOLLOWING LIST OF SHEET NUMBERS
 WERE DELETED FROM ORIGINAL PLANS.
 4, 5, 7, 9, 10, 16, 17, 18, 19, 20, 33, 34, 36, 37,
 38, 42, 44, 45 & 50.

LEGEND

ROADS	—
RAILROADS	—
RIVERS	—
CREEKS	—
APPROXIMATE CORPORATE LIMITS	- - -
EXISTING SEWERS	—
PROPOSED SEWERS	—
DEFERRED CONSTRUCTION	—

DATE: JAN - 1966
 ALL SEWERS 8" UNLESS OTHERWISE SHOWN.

REGISTERED PROFESSIONAL ENGINEER
 STATE OF TENNESSEE
 LICENSE No. 836

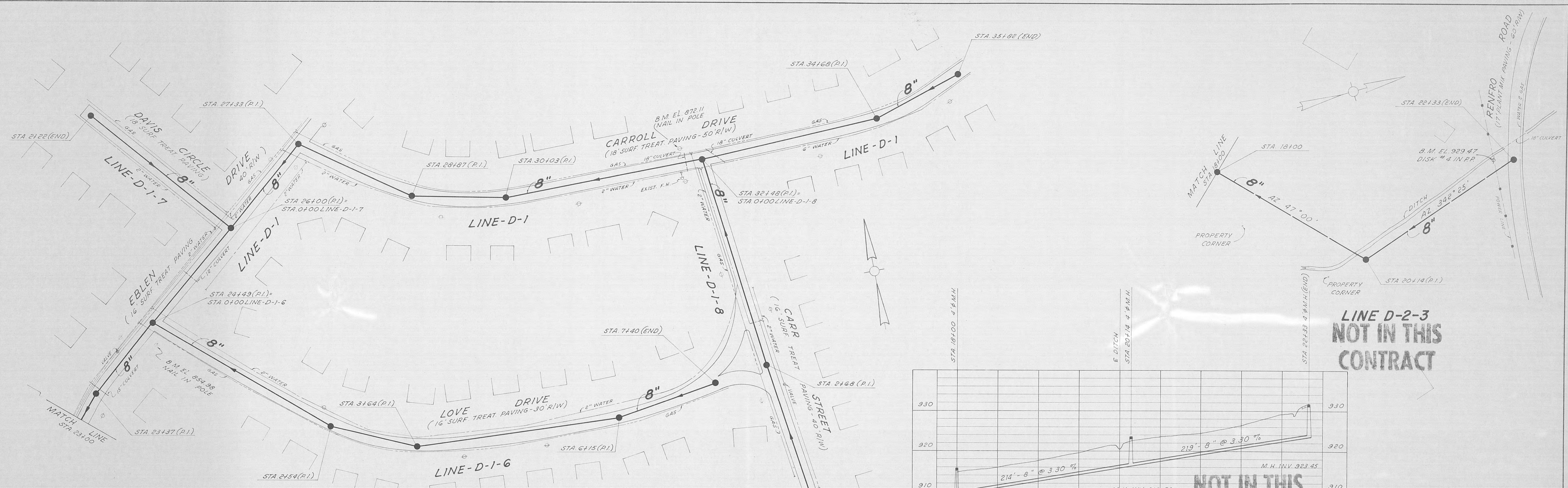
B. B. Clouser
 B. B. CLOUSER

USPHS PROJECT
 No. WPC - TENN. - 166
 DIVISION ONE

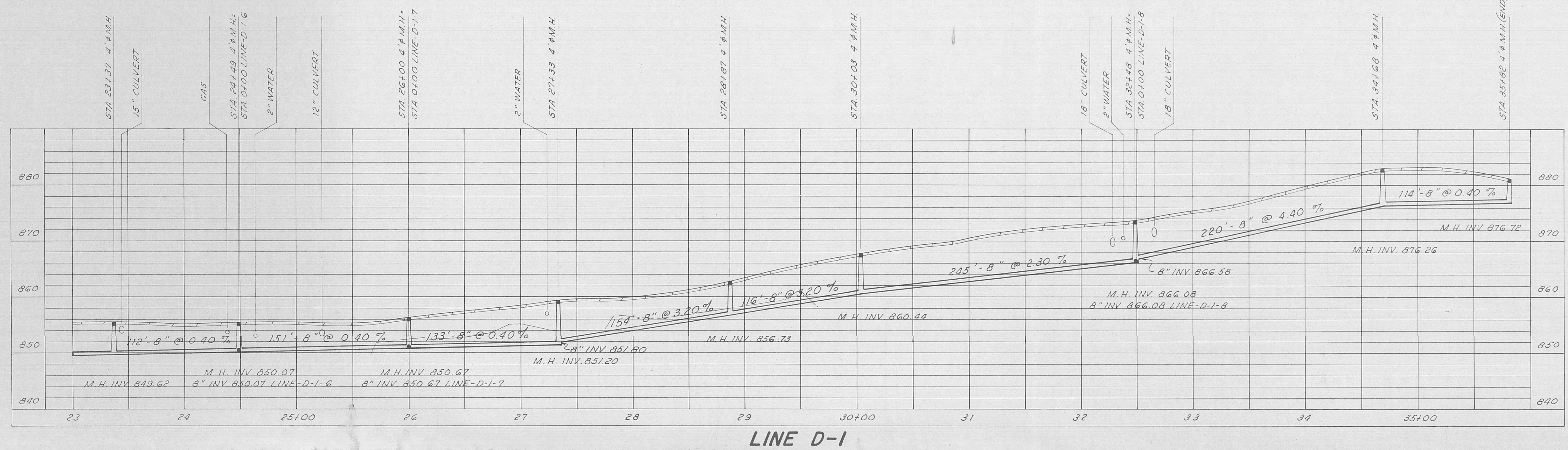
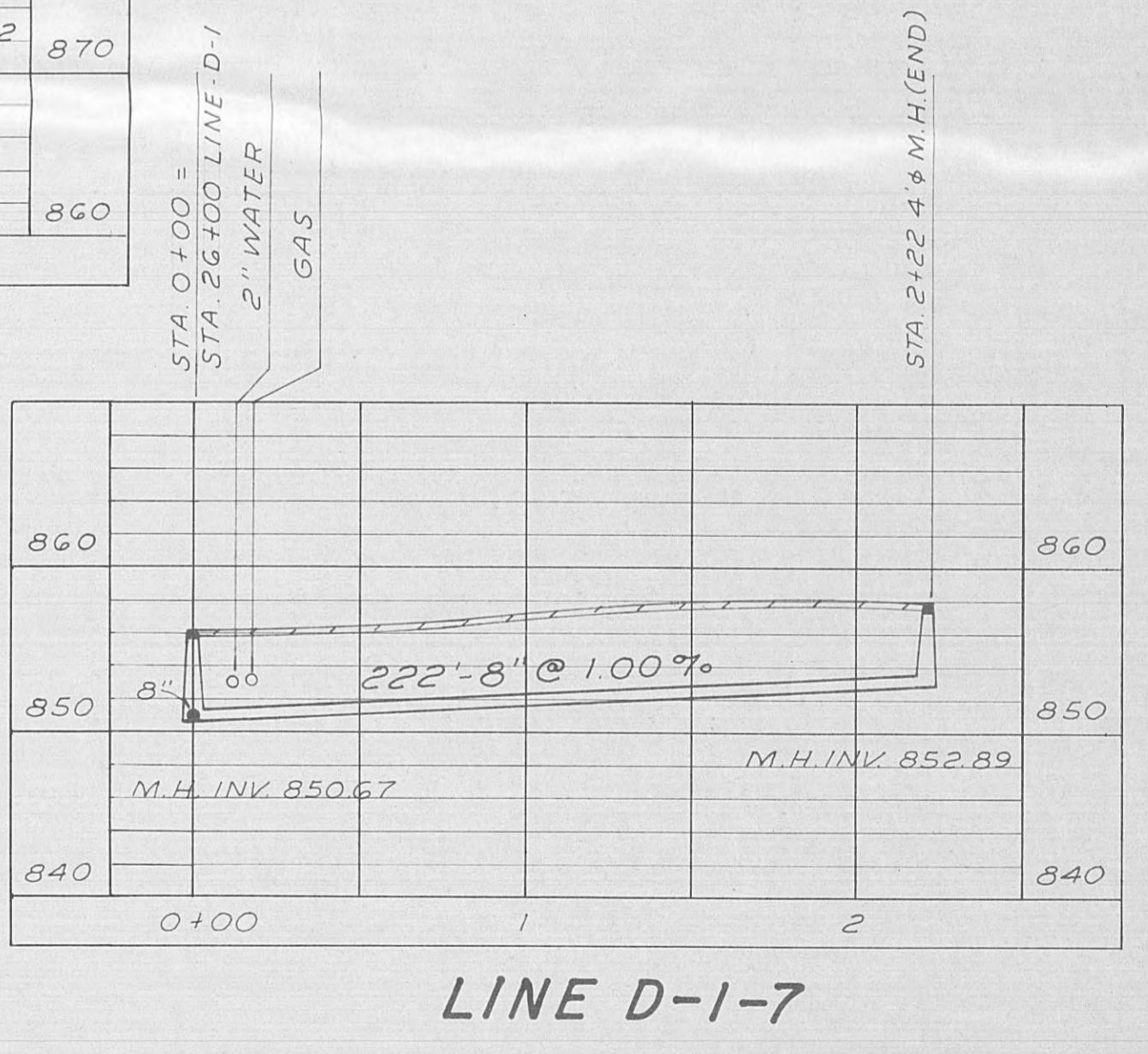
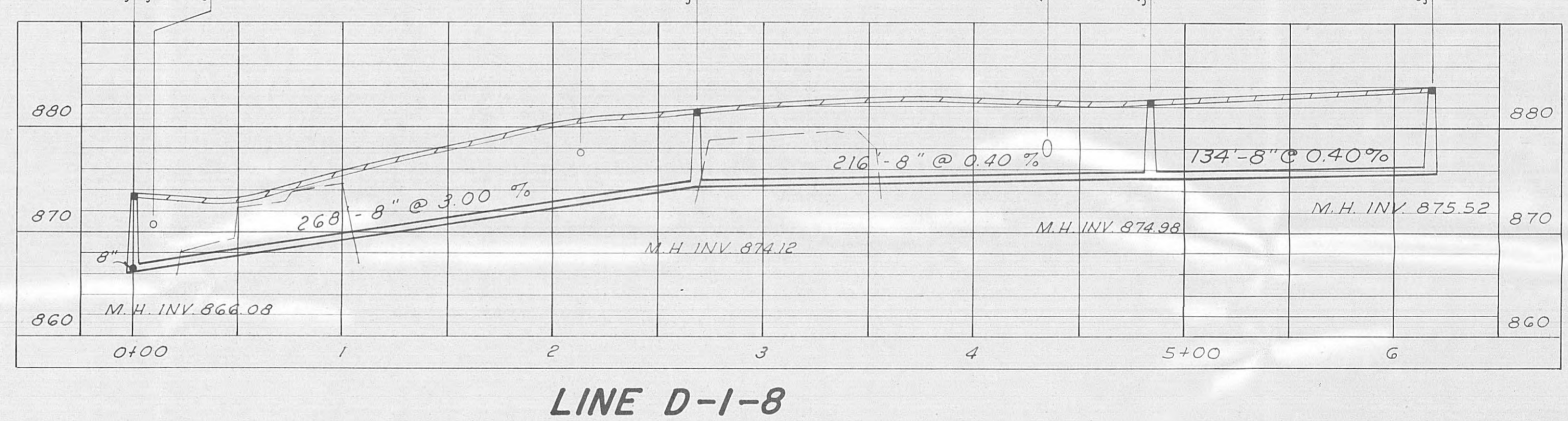
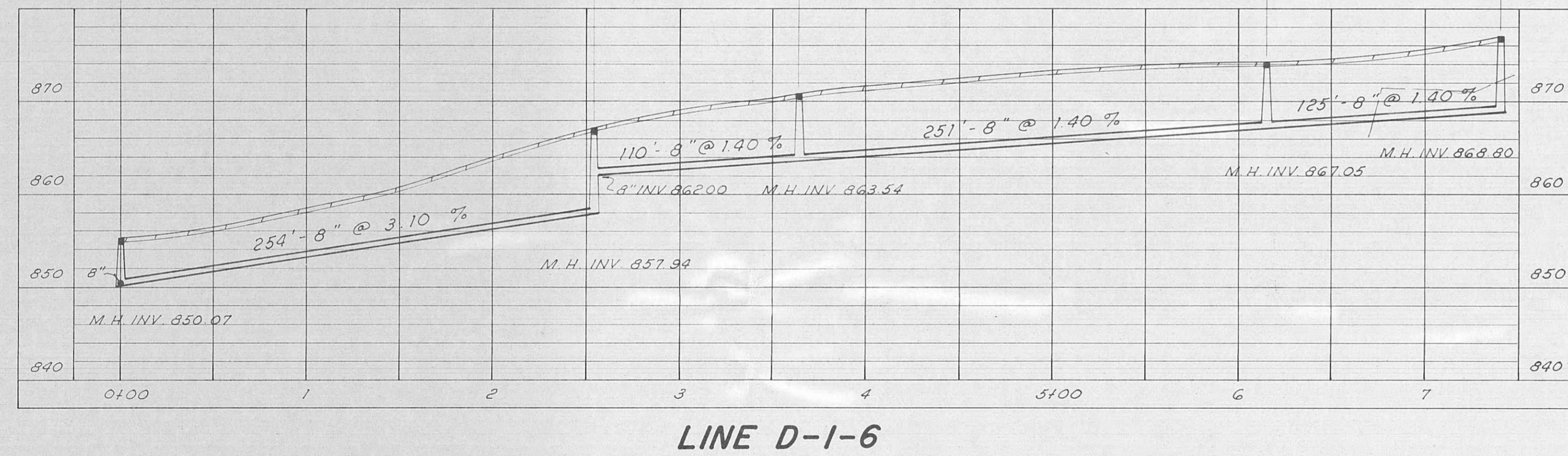
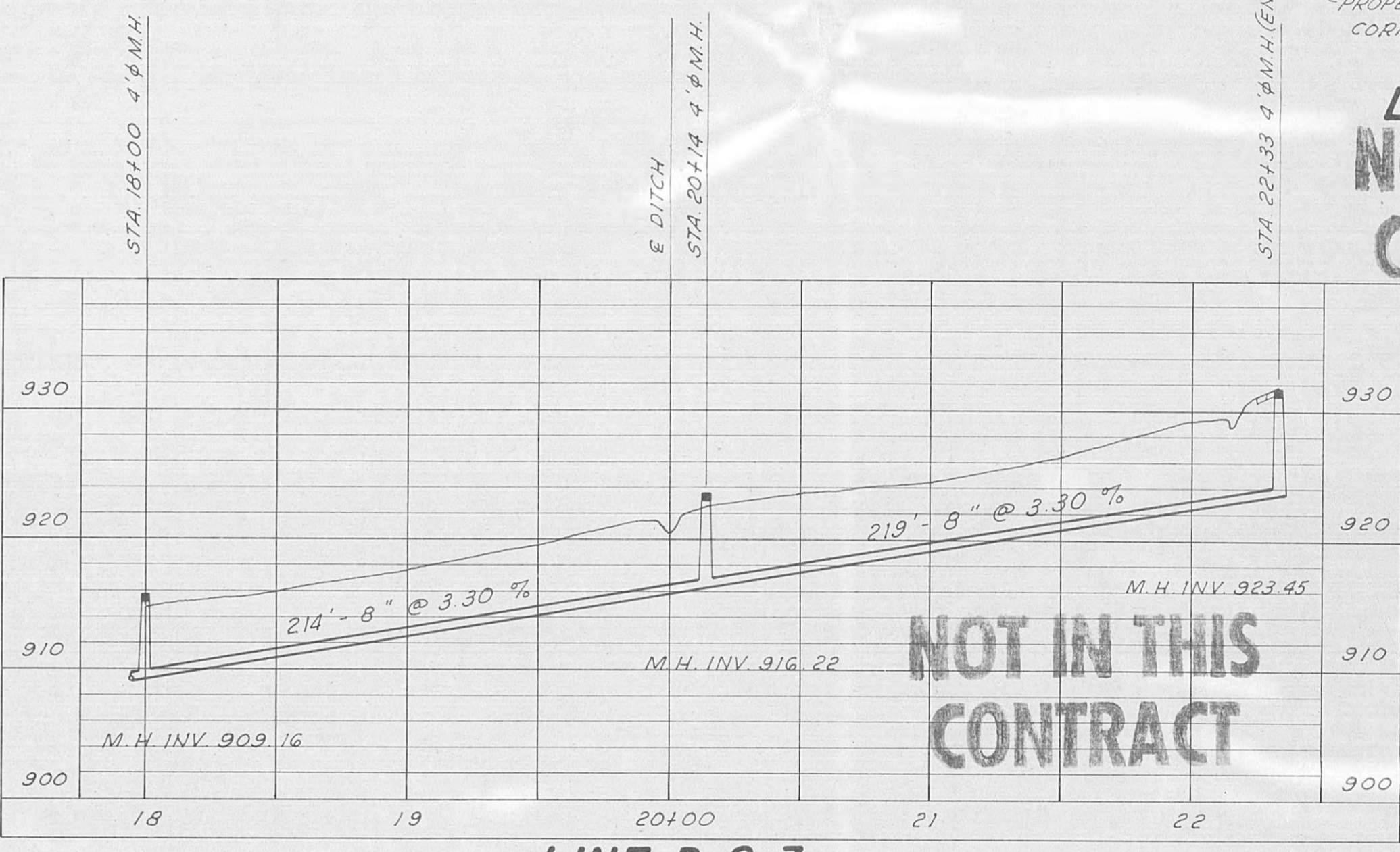
CITY OF HARRIMAN, TENNESSEE
 SEWERAGE SYSTEM IMPROVEMENTS

LOCATION MAP

SCALE 1" = 500'	WIEDEMAN AND SINGLETON ENGINEERS	SHEET 1
DATE JAN., 1966	ATLANTA GEORGIA	OF 59



LINES D-1, D-1-6, D-1-7 & D-1-8



USPHS PROJECT
No. WPC - TENN - 166
DIVISION ONE

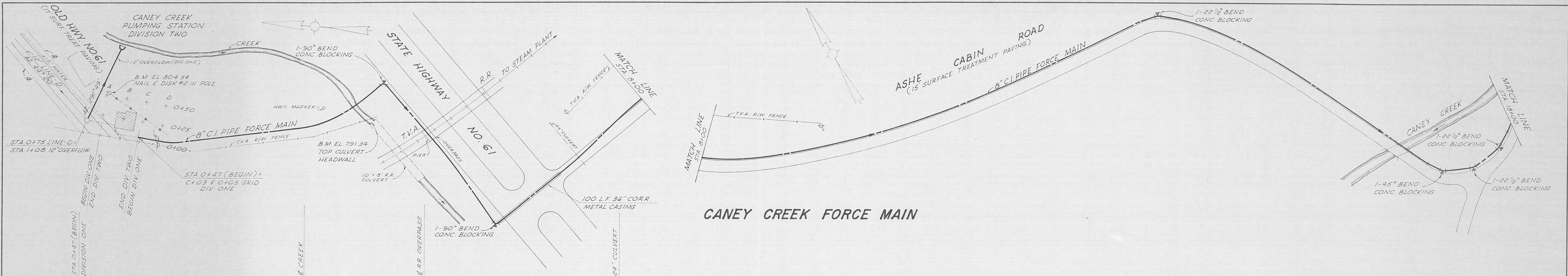
CITY OF HARRIMAN, TENNESSEE
SEWERAGE SYSTEM IMPROVEMENTS

LINE D-1 STA 23+00 TO STA 35+82(EN)
LINE D-1-6 STA 0+00 TO STA 7+40(EN)
LINE D-1-7 STA 0+00 TO STA 2+22(EN)
LINE D-1-8 STA 0+00 TO STA 6+18(EN)
LINE D-2-3 STA 18+00 TO STA 22+33(EN)

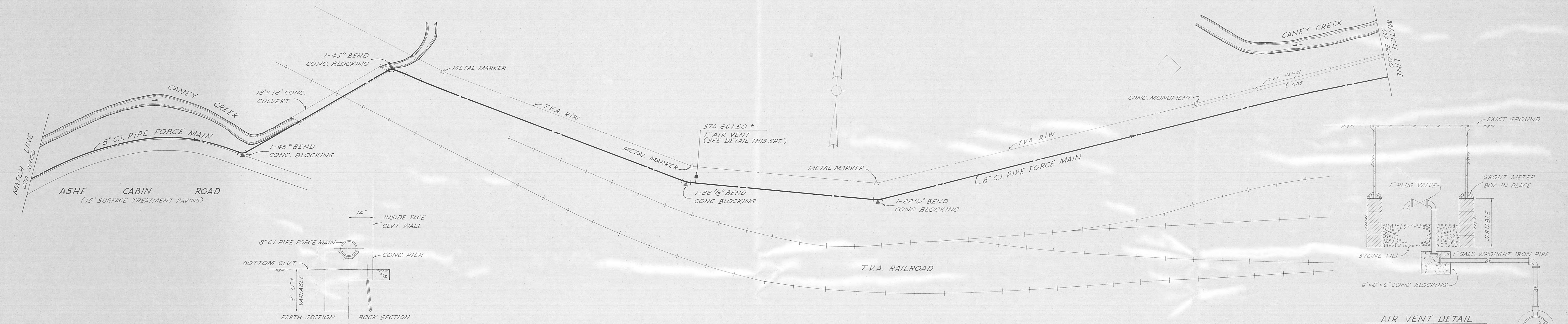
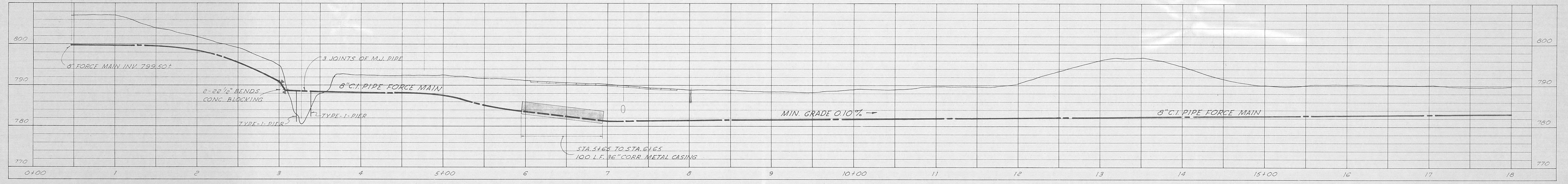
SCALE
1"=50' HORZ
1"=10' VERT
DATE
JAN, 1966

WIEDEMAN AND SINGLETON
ENGINEERS
ATLANTA GEORGIA

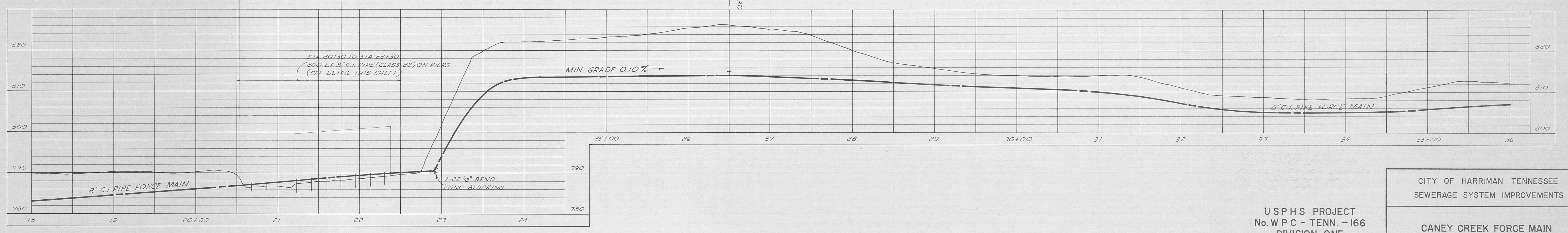
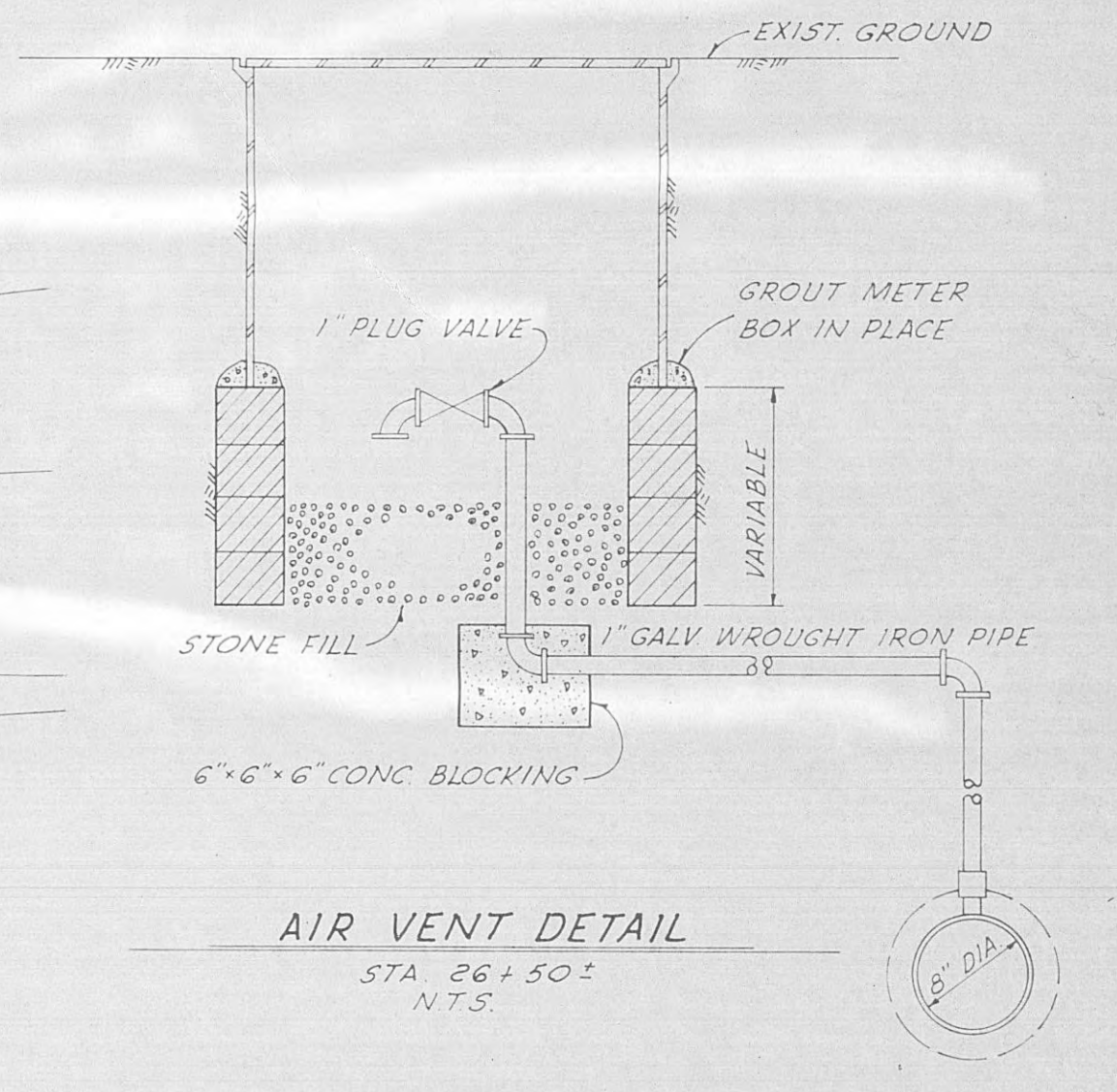
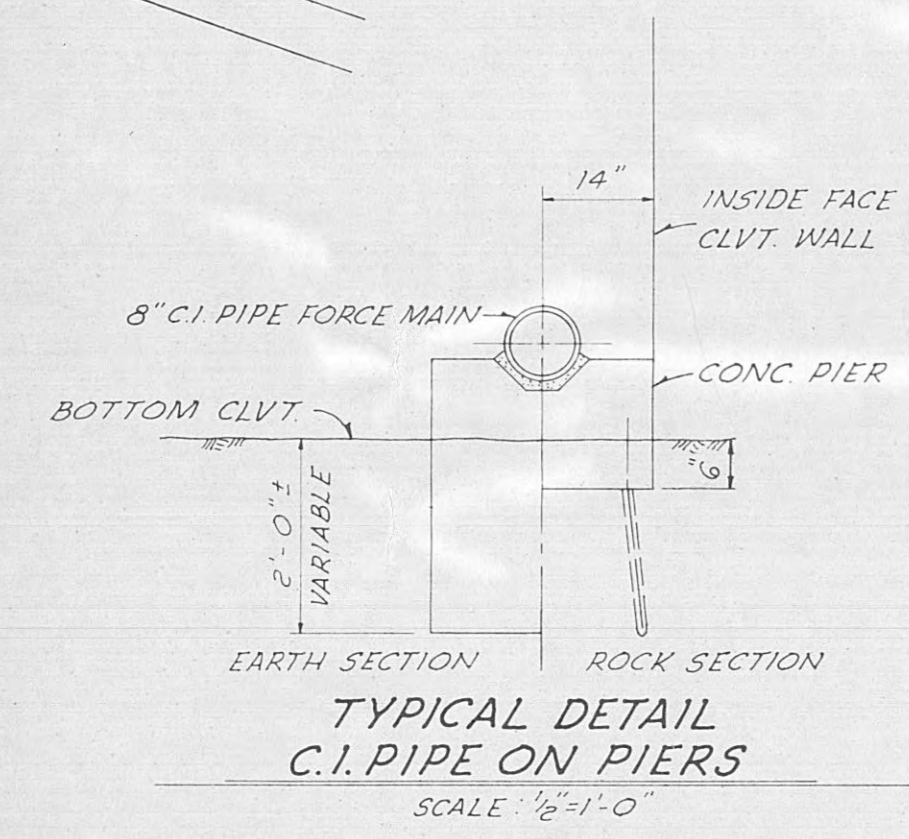
SHEET
32
OF 59



CANEY CREEK FORCE MAIN



CANEY CREEK FORCE MAIN



USPHS PROJECT
No. WPC - TENN. - 166
DIVISION ONE

CITY OF HARRIMAN TENNESSEE
SEWERAGE SYSTEM IMPROVEMENTS

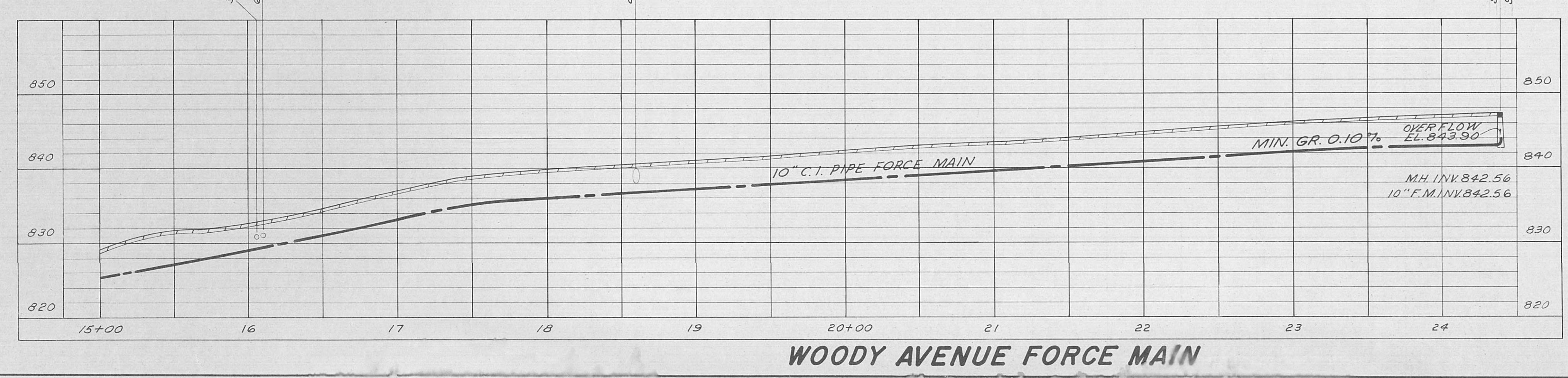
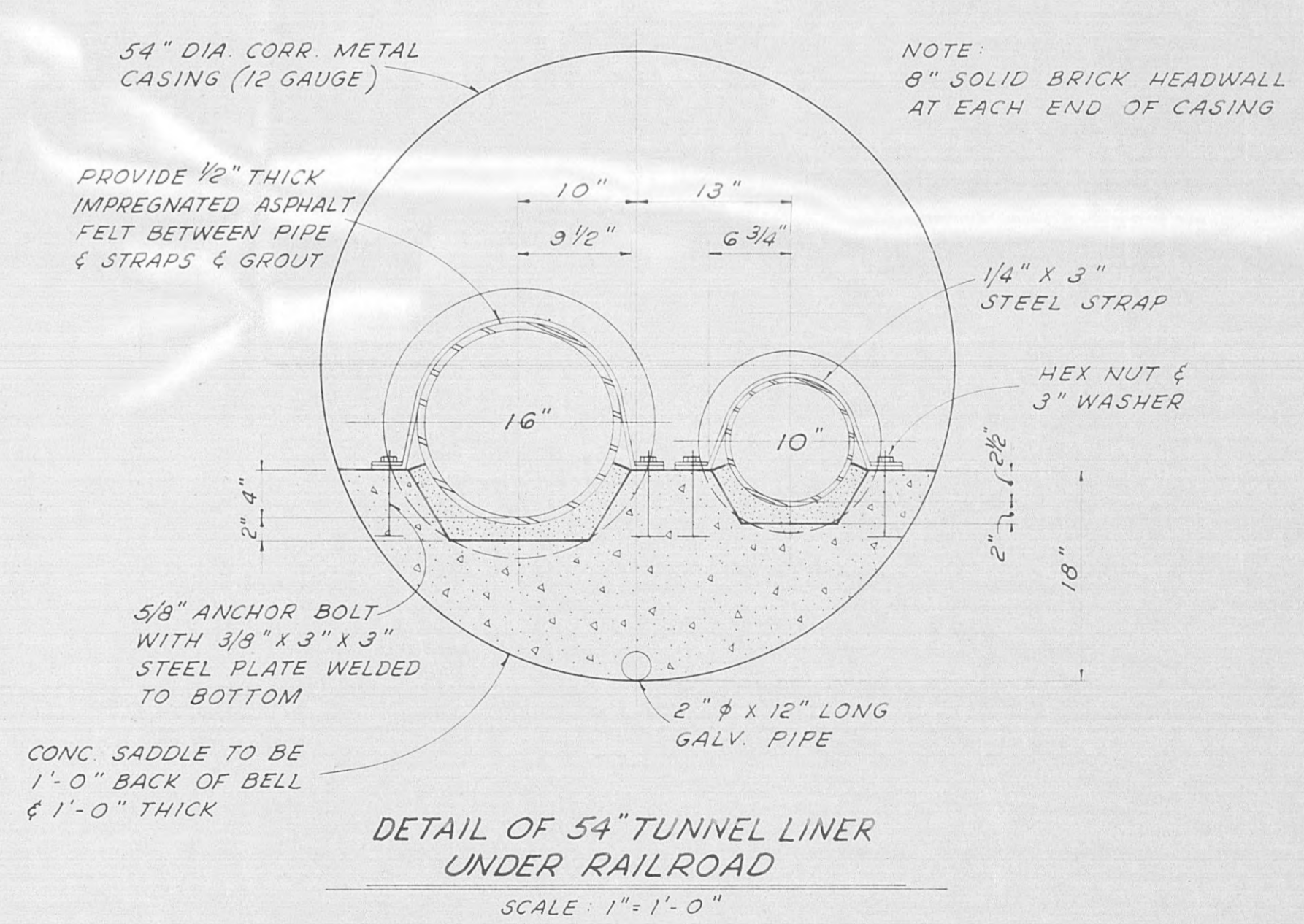
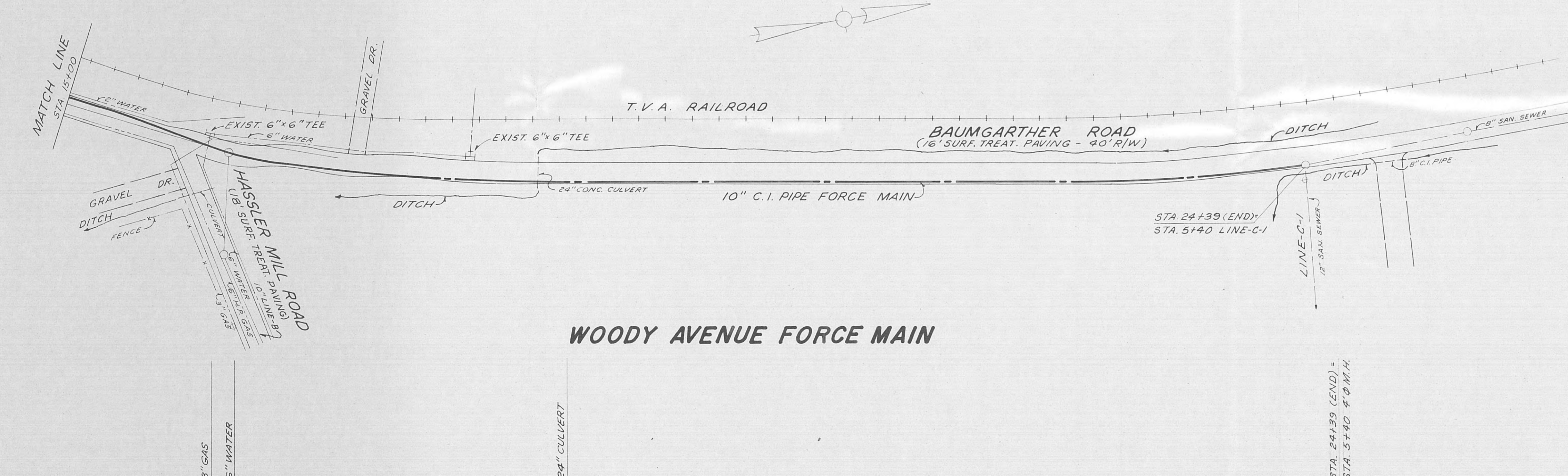
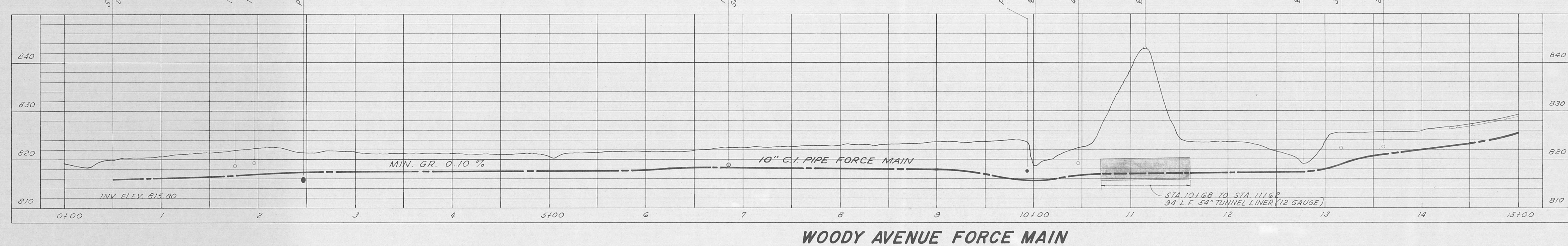
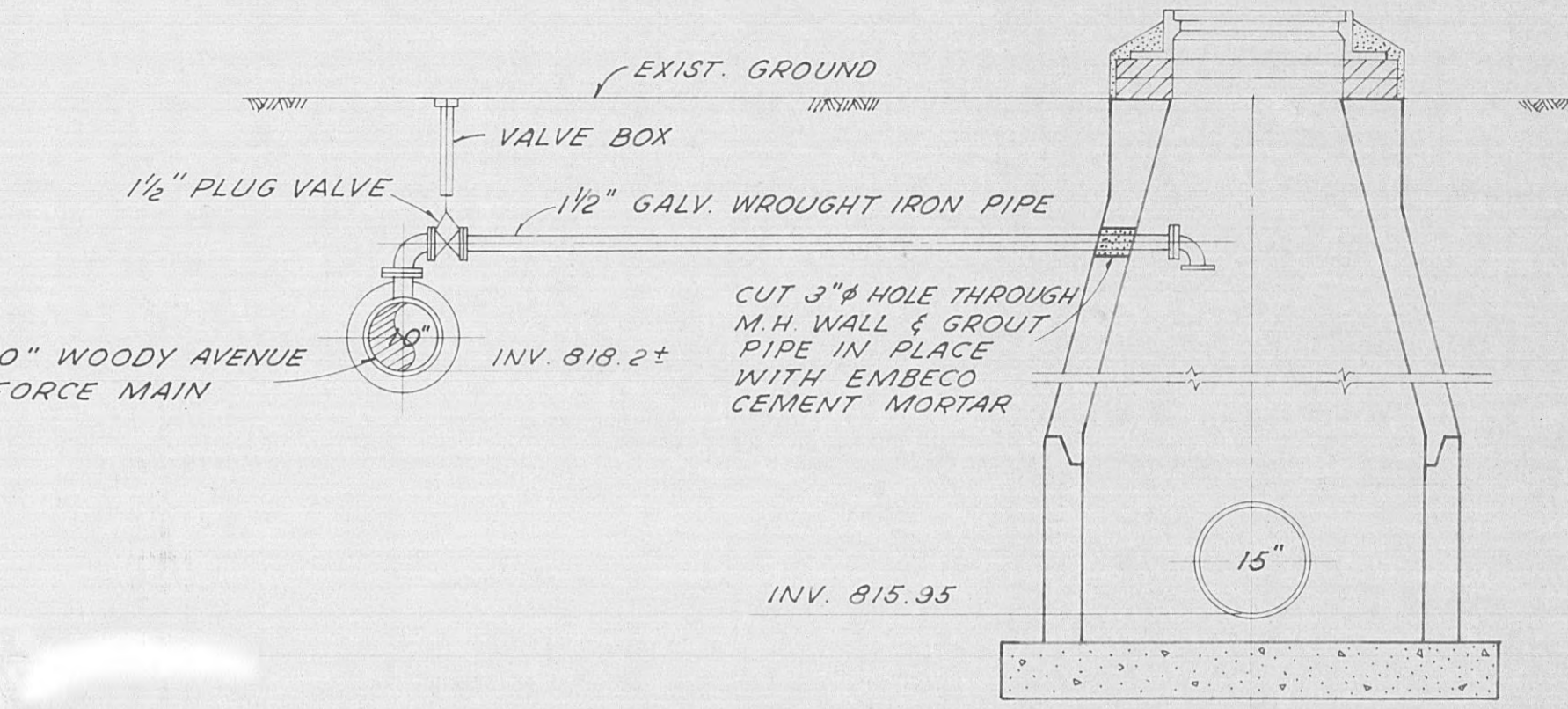
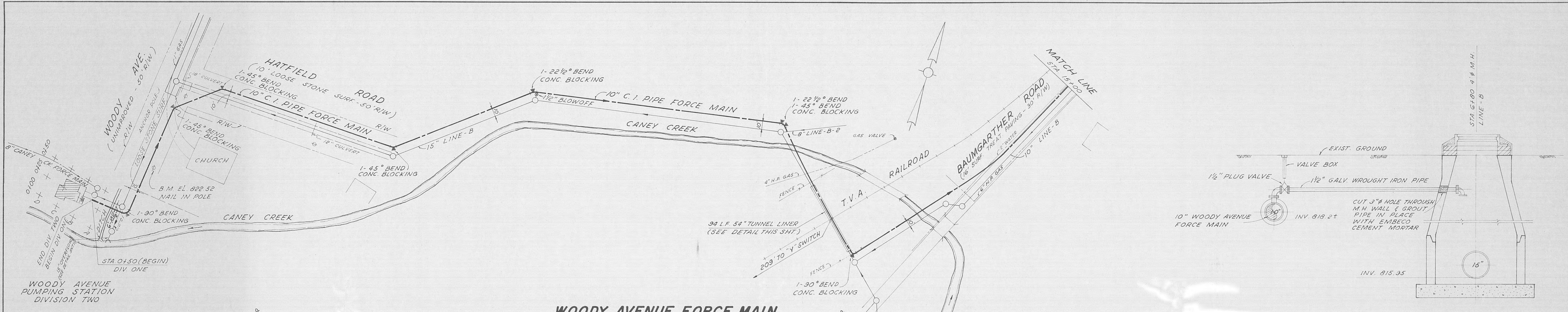
CANEY CREEK FORCE MAIN
(BEGIN) STA. 0+47 TO STA. 36+00

SCALE
1\"/>

WIEDEMAN AND SINGLETON
ENGINEERS
ATLANTA GEORGIA

SHEET
51
OF 59

NOTE: REVISED FEB. 1, 1967

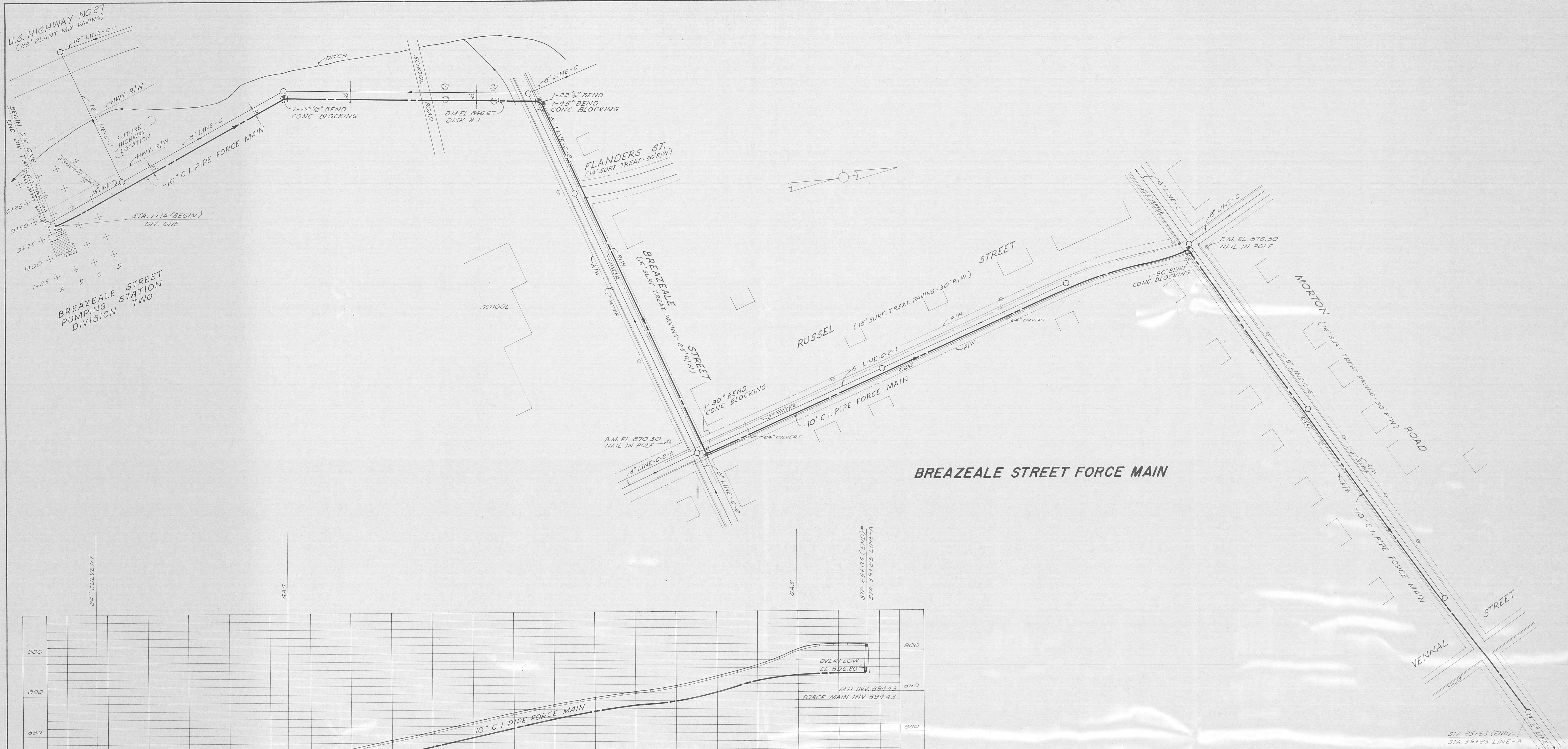


USPHS PROJECT
No. WPC - TENN. - 166
DIVISION ONE

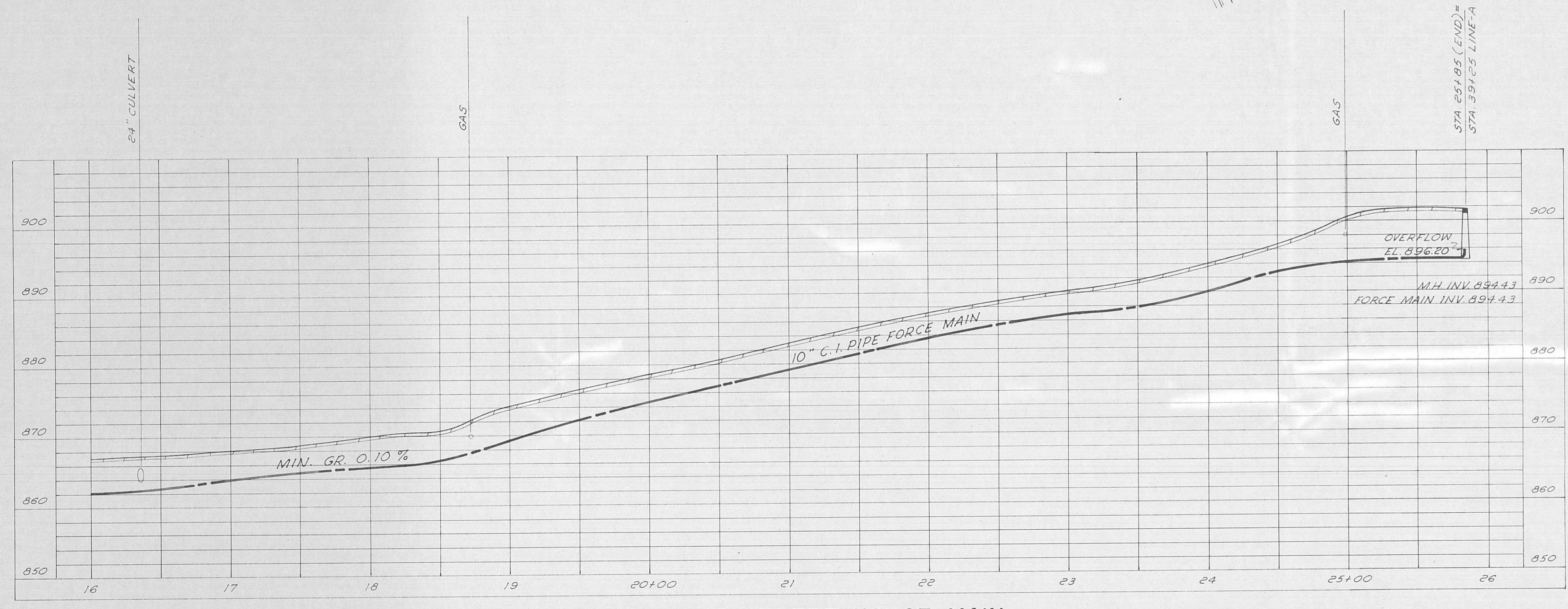
CITY OF HARRIMAN, TENNESSEE
SEWERAGE SYSTEM IMPROVEMENTS

WOODY AVENUE FORCE MAIN
(BEGIN) STA. 0+50 TO STA. 24+39 (END)

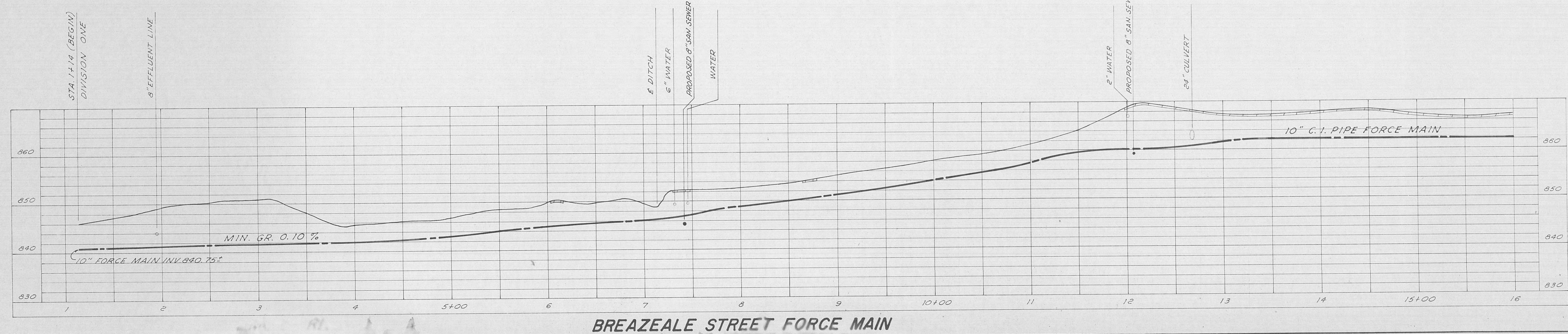
SCALE 1"=50' HORZ. 1"=10' VERT. DATE	WIEDEMAN AND SINGLETON ENGINEERS ATLANTA GEORGIA	SHEET 53 OF 59
---	--	-----------------------------



BREAZEALE STREET FORCE MAIN



BREAZEALE STREET FORCE MAIN



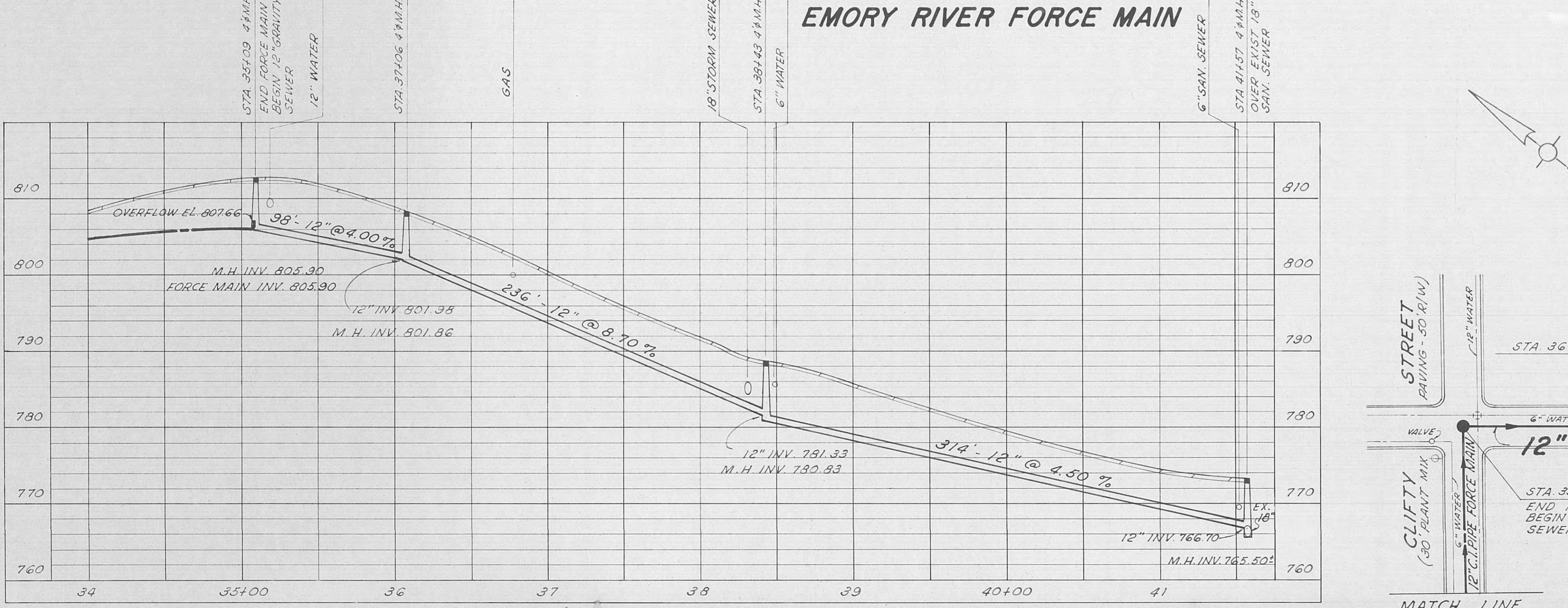
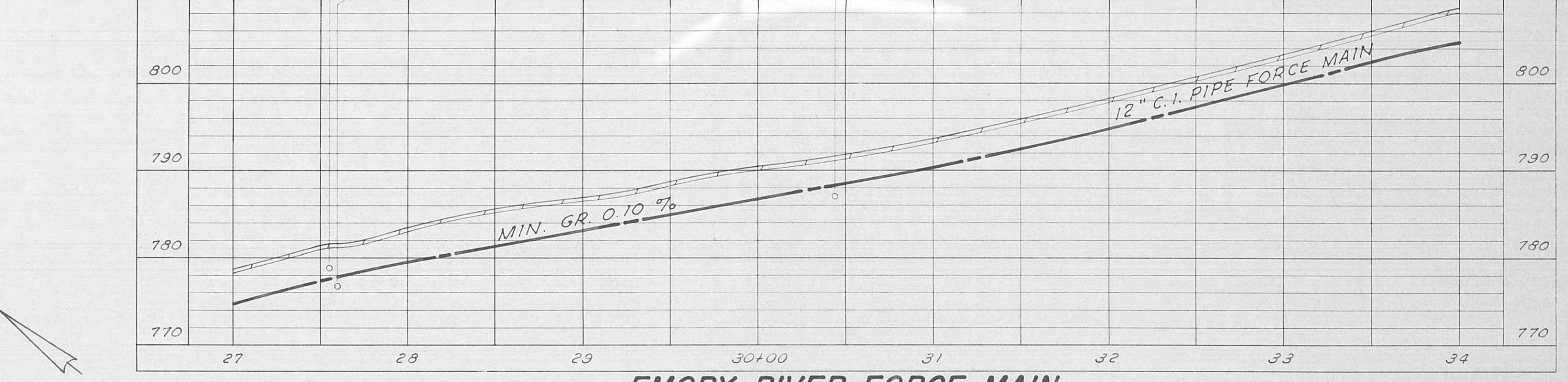
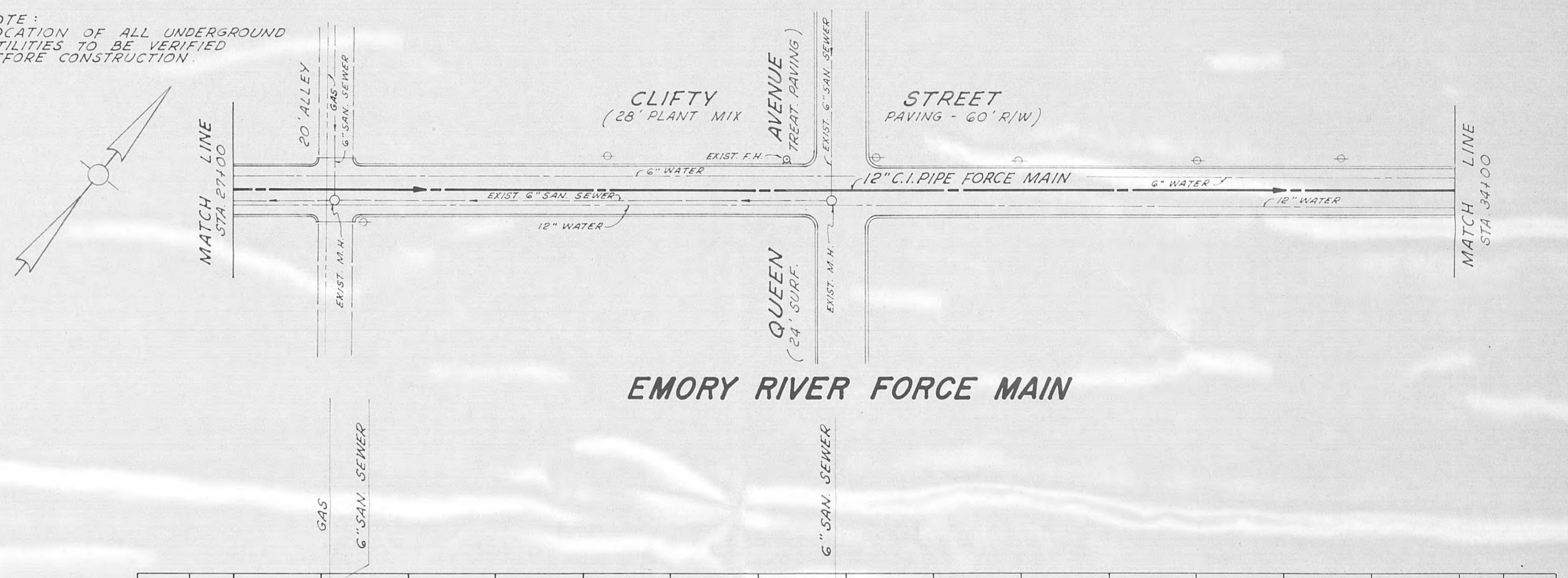
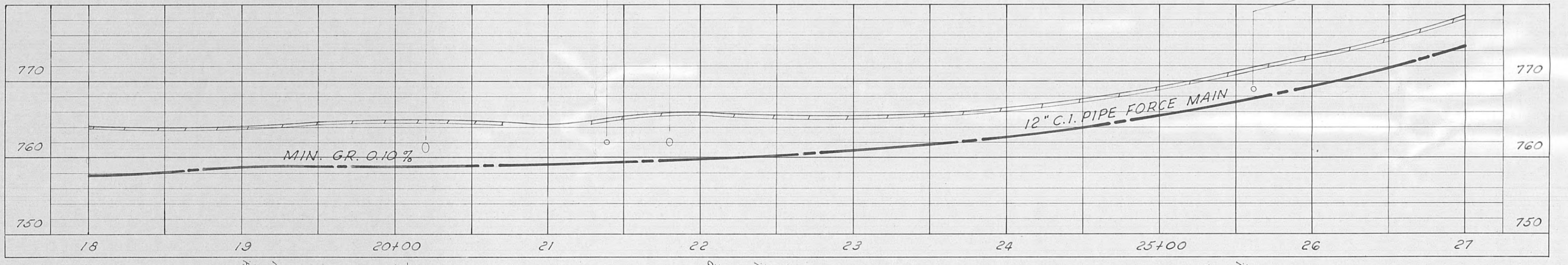
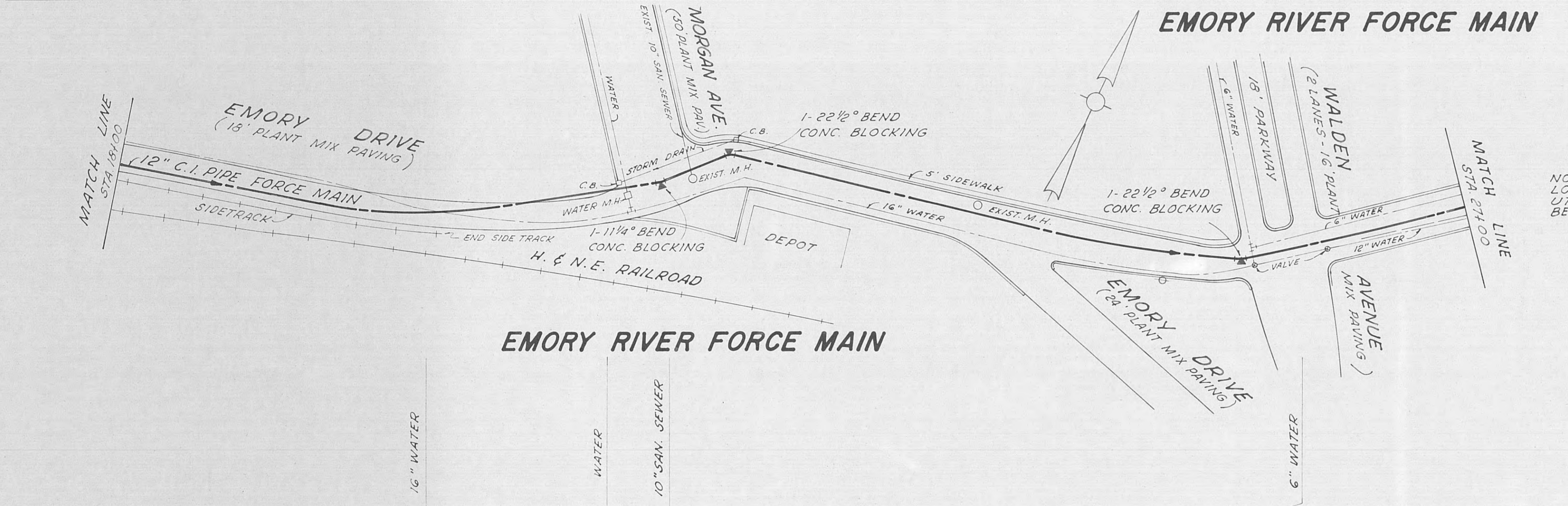
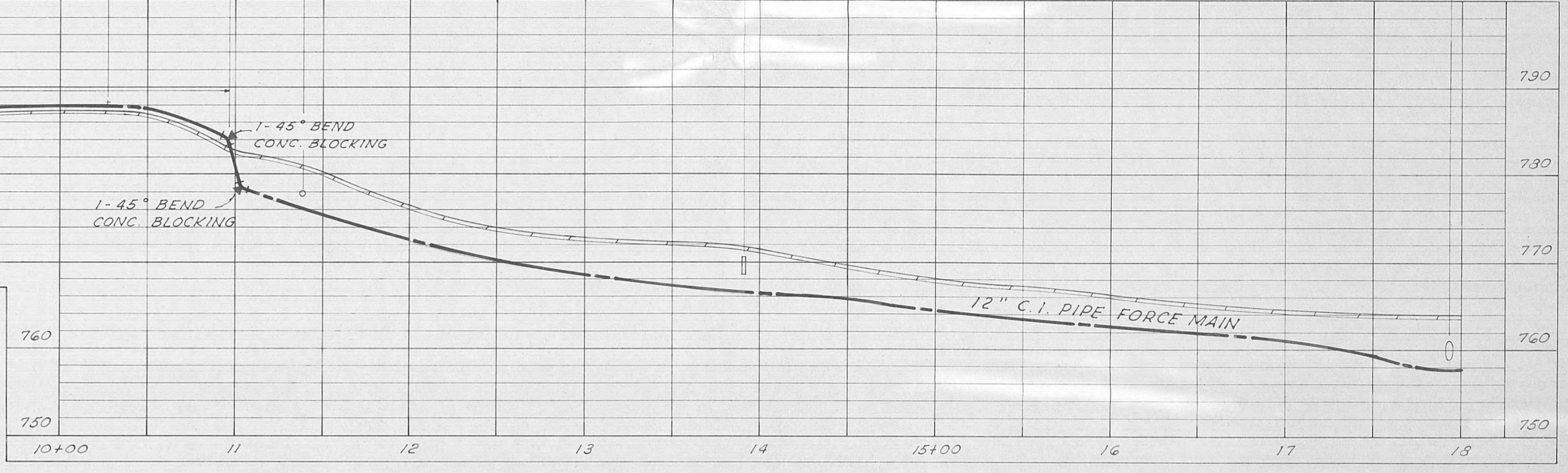
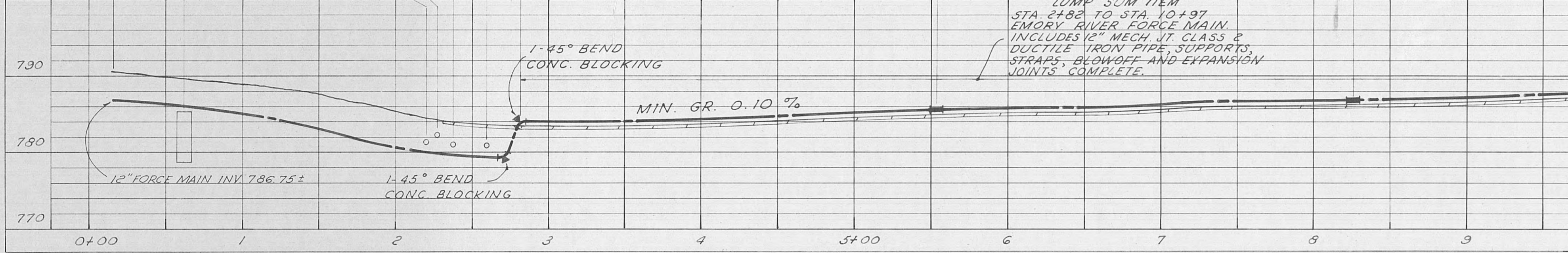
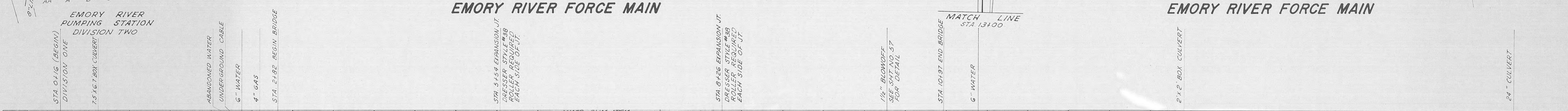
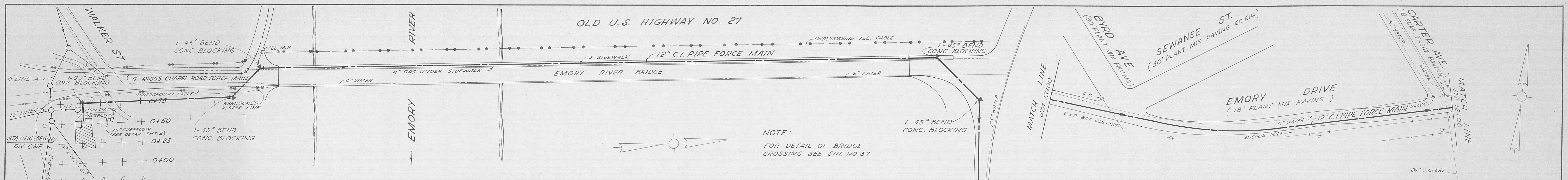
BREAZEALE STREET FORCE MAIN

USPHS PROJECT
No. WPC - TENN. - 166
DIVISION ONE

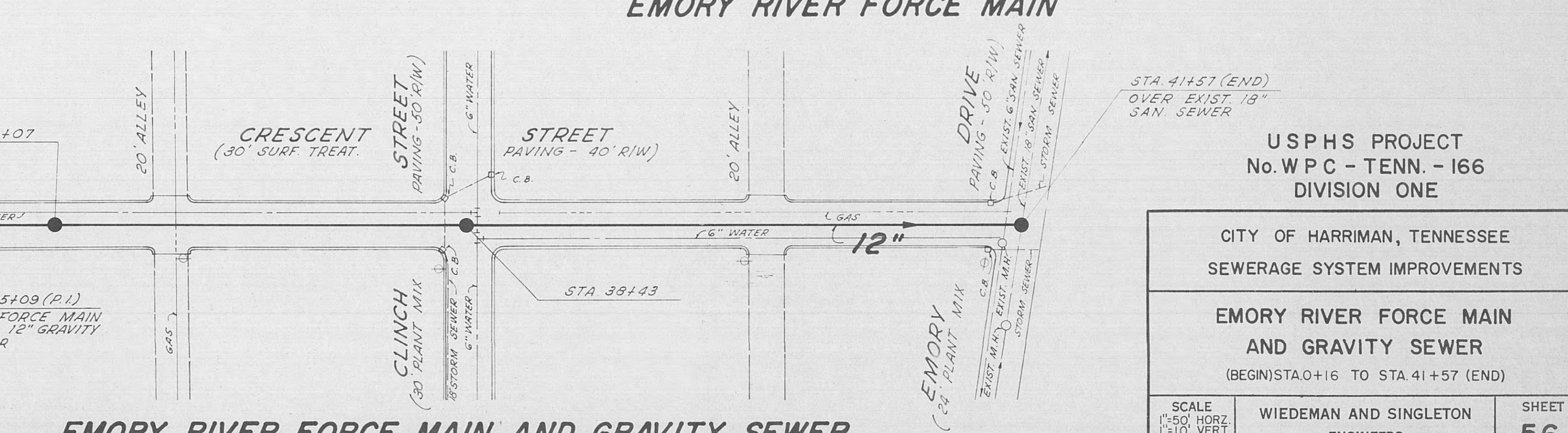
CITY OF HARRIMAN, TENNESSEE
SEWERAGE SYSTEM IMPROVEMENTS

BREAZEALE STREET FORCE MAIN
(BEGIN) STA. 1+14 TO STA. 25+85 (END)

SCALE 1"=50' HORZ 1"=10' VERT DATE JAN, 1966	WIEDEMAN AND SINGLETON ENGINEERS ATLANTA GEORGIA	SHEET 54 OF 59
--	--	-----------------------------



EMORY RIVER FORCE MAIN AND GRAVITY SEWER



EMORY RIVER FORCE MAIN AND GRAVITY SEWER

USPHS PROJECT
No. WPC - TENN. - 166
DIVISION ONE

CITY OF HARRIMAN, TENNESSEE
SEWERAGE SYSTEM IMPROVEMENTS

EMORY RIVER FORCE MAIN
AND GRAVITY SEWER
(BEGIN) STA. 0+16 TO STA. 41+57 (END)

SCALE
1" = 50' HORIZ.
1" = 10' VERT.
DATE
JAN., 1966

WIEDEMAN AND SINGLETON
ENGINEERS
ATLANTA GEORGIA

SHEET
56
OF 59