

| |
|---------------------------|
| GAS VALVE NUMBER/S |
| 371-00 |
| MAP INDEX NUMBER |
| 56F |
| MAP INDEX QUADRANT |
| SW |

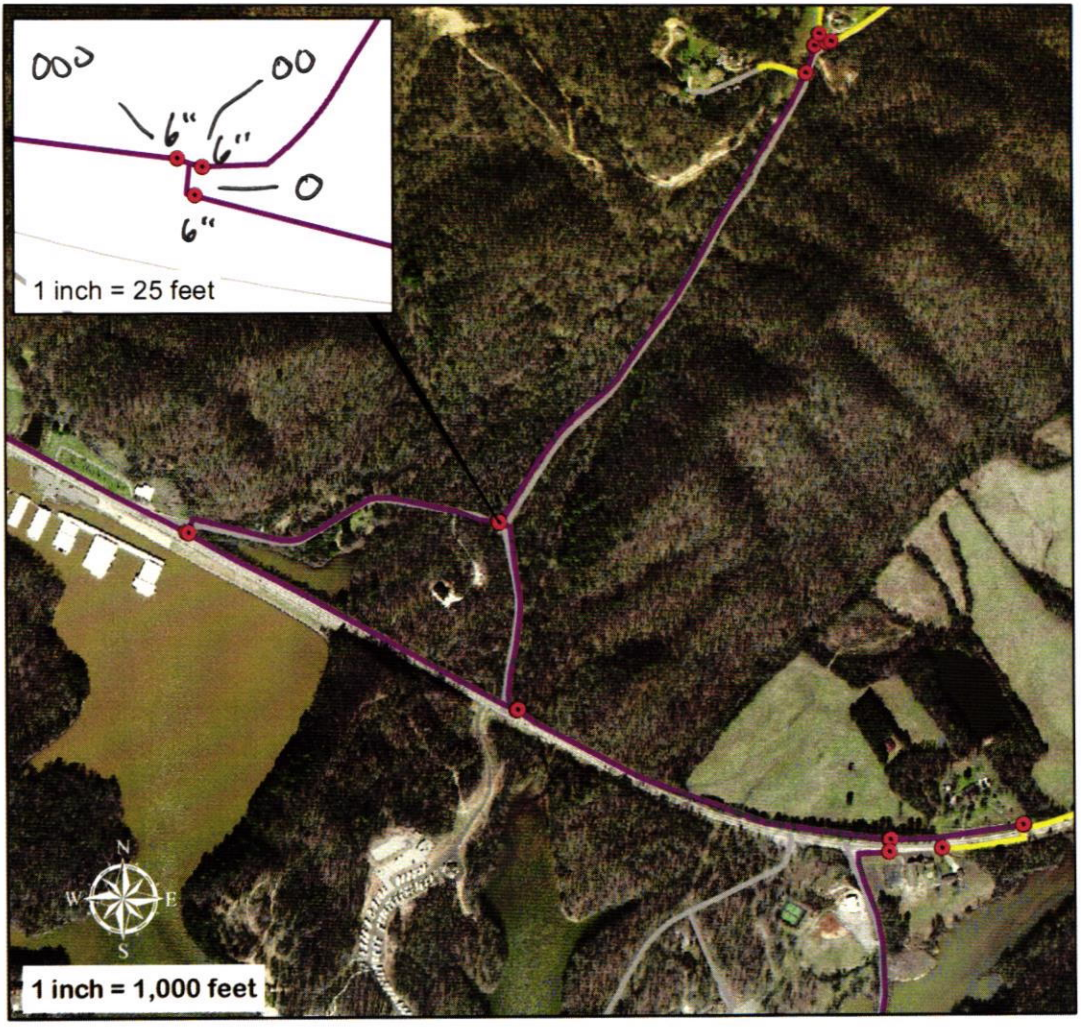
TN St. Plane Coords, NAD 83:
 E-2,384,666', N-562,249'
 (sub-meter accuracy only)

Legend

- VALVE

GAS LINE DIAMETER

- 1
- 2
- 3
- 4
- 6
- 8



GAS VALVE STREET LOCATION

Top Left Valve at the Intersection of Headwaters Dr. and Poland Hollow Rd.

GAS VALVE INSPECTION

| DATE | SIZE | TYPE | OPERATIONAL | | INSPECTED BY | COMMENTS |
|---------|------|------|-------------|----|------------------|----------|
| | | | YES | NO | | |
| 8-2-13 | 6" | Poly | ✓ | | Taylor/Tim | Big key |
| 10-1-14 | 6" | Poly | ✓ | | Taylor | Big key |
| 7-15-15 | 6" | Poly | ✓ | | Taylor/Billy | Big key |
| 9-7-14 | " | " | ✓ | | J.M. Andrew T.J. | |
| 8-7-17 | | Poly | ✓ | | T.J. AH | |
| 7-20-18 | | | ✓ | | T.J. AH | |
| 7-18-19 | | | ✓ | | T.J. CW | |
| 8-5-20 | 6" | Poly | ✓ | | AS MW | Big Key |
| 8-10-21 | 6" | Poly | ✓ | | CW BL | |

