

GAS VALVE NUMBER/S

371-G

MAP INDEX NUMBER

56L

MAP INDEX QUADRANT

SW

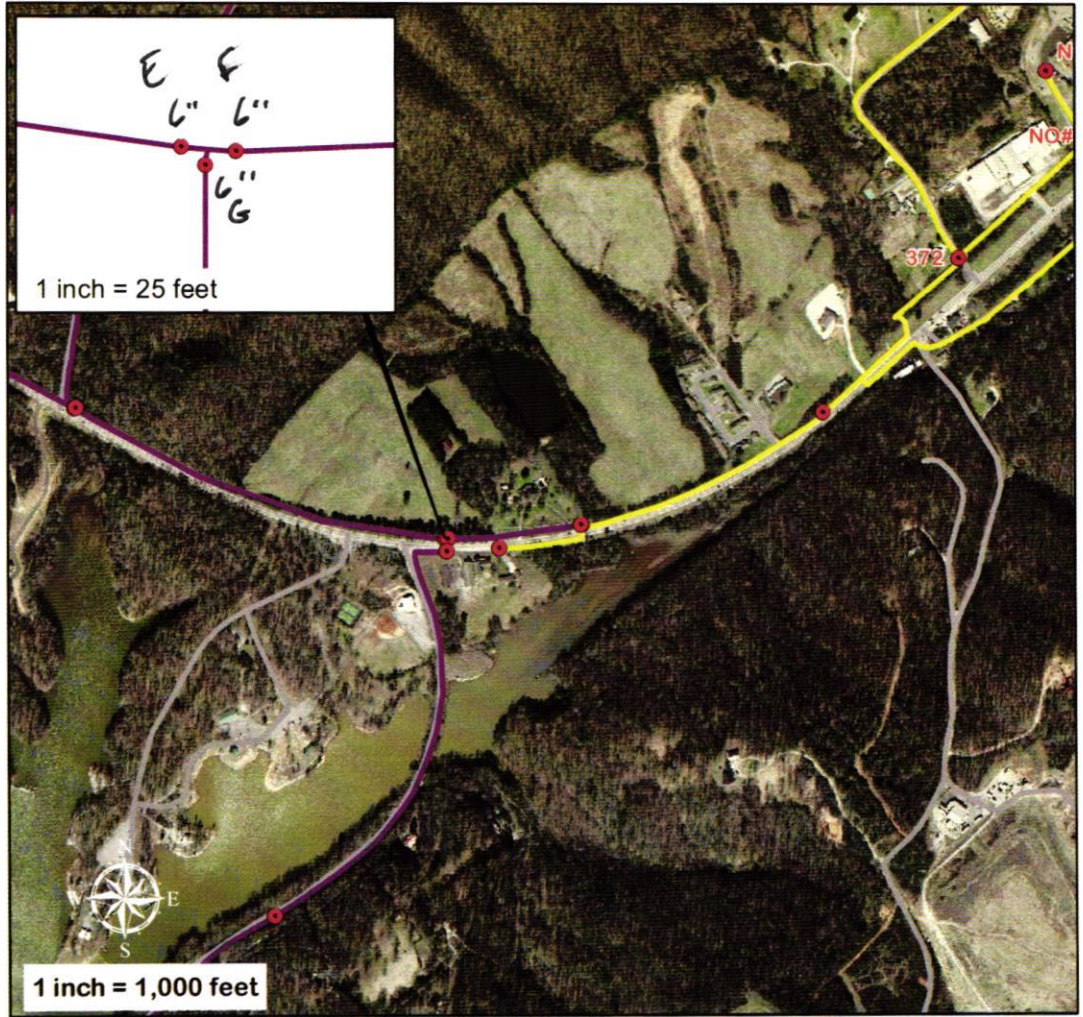
TN St. Plane Coords, NAD 83:  
E-2,386,700', N-560,607'  
(sub-meter accuracy only)

**Legend**

● VALVE

GAS LINE  
DIAMETER

- 1
- 2
- 3
- 4
- 6
- 8



GAS VALVE STREET LOCATION

Valve at the Intersection Poland Hollow Rd and US HWY 70 (Top Right)

GAS VALVE INSPECTION

| DATE    | SIZE | TYPE | OPERATIONAL |    | INSPECTED BY      | COMMENTS |
|---------|------|------|-------------|----|-------------------|----------|
|         |      |      | YES         | NO |                   |          |
| 8-2-13  | 6"   | Poly | ✓           |    | Taylor/Tim        | Big key  |
| 10-1-14 | 6"   | Poly | ✓           |    | Taylor            | Big key  |
| 7-15-15 | 6"   | Poly | ✓           |    | Taylor, Billy     | Big key  |
| 8-31-16 | 6"   | Poly | ✓           |    | JMM/Mike Anderson | ✓ ✓      |
| 8-7-17  | 6"   | Poly | ✓           |    | T.J. AH           |          |
| 7-20-18 |      |      | ✓           |    | T.J. AH           |          |
| 7-16-19 |      |      | ✓           |    | T.J. CW           |          |
| 8-4-20  | 6"   | Poly | ✓           |    | West AS           | Big key  |
| 8-16-21 | 6"   | Poly | ✓           |    | CW. BCL           | Big key  |

