

GAS VALVE NUMBER/S

339

MAP INDEX NUMBER

57F

MAP INDEX QUADRANT

NE

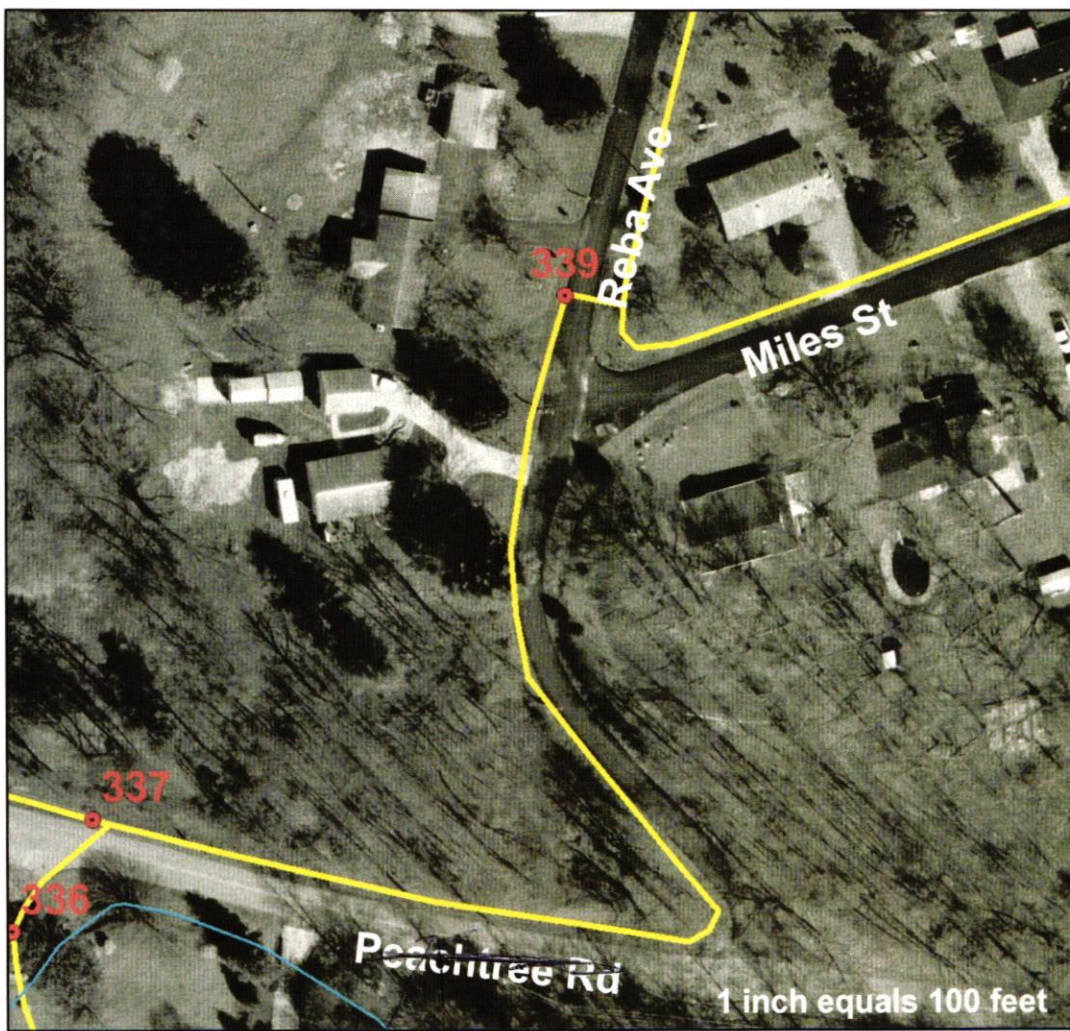
TN St. Plane Coords, NAD 83:
E-2,398,742', N-562,756'
(sub-meter accuracy only)

● GasValves_G

gaslines

DIAMETER

- 1
- 2
- 3
- 4
- 6
- 8



GAS VALVE STREET LOCATION

(curb stop)

On Reba Ave., Near ths Intersection with Miles St.

GAS VALVE INSPECTION

DATE	SIZE	TYPE	OPERATIONAL		INSPECTED BY	COMMENTS
			YES	NO		
7-28-07	2"	Poly	✓		JH & Donnie	
5-12-08	2"	Poly	✓		Jr, Donnie	Big Key
11-23-10	2"	Poly	✓		Taylor	Big Key
8-19-11	2"	Poly	✓		Taylor James	Big Key
1-14-12		"	✓		JH Billy	" "
7-26-13	2"	"	✓		Taylor/Tina	" "
9-16-14	2"	"	✓		Taylor/Donnie	" "
7-14-15			✓		Taylor TJ	
8-30-16	2"	Poly	✓		JH Drew Moke	Big Key
8-4-17		Poly	✓		TJ AH	
7-19-18			✓		TJ AH	
7-16-19			✓		TJ CW	
7-31-20	2"	Poly	✓		CW TJ	Big Key

