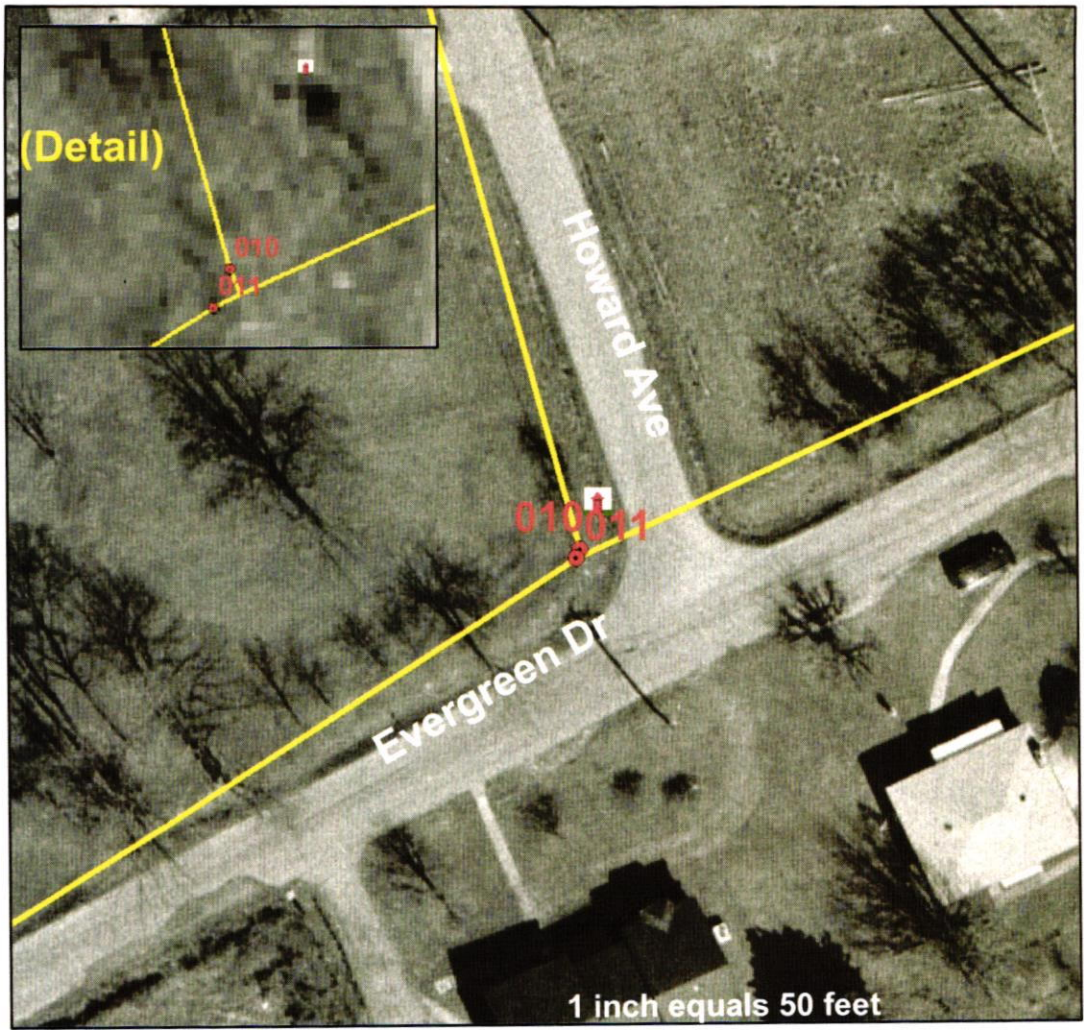


GAS VALVE NUMBER/S
010
MAP INDEX NUMBER
17E
MAP INDEX QUADRANT
NE

TN St. Plane Coords, NAD 83:
E-2,401,268', N-594,813'
(sub-meter accuracy only)

● GasValves_G
gaslines
DIAMETER
— 1
— 2
— 3
— 4
— 6
— 8



GAS VALVE STREET LOCATION (big key)
At the Intersection of Evergreen Dr. and Howard Ave.

GAS VALVE INSPECTION						
DATE	SIZE	TYPE	OPERATIONAL		INSPECTED BY	COMMENTS
			YES	NO		
6-6-09	2"		✓		Jeff - Bull	
6-11-10	2"		✓		Taylor - Fitzhugh	
6-25-11	2"		✓		Taylor & Colley	
6-2-12	2"		✓		Jim Jolly	
7-9-13	2"		✓		Taylor / Tina	
7-26-14	2"		✓		Taylor & T.J.	
7-10-15	2"		✓		Taylor & Billy	Big Key
9/12/16	2"		✓		J.M. T.J. Andrew	M. 26
8-9-17	2"		✓		T.J. Andrew	
7-11-18	2"		✓		T.J. AH	
7-8-19			✓		T.J. AA	
8-15-20			✓		T.J. MJ	
8-14-21	2"		✓		J.M. T.J.	

