

GAS VALVE NUMBER/S
007
MAP INDEX NUMBER
17D
MAP INDEX QUADRANT
SE

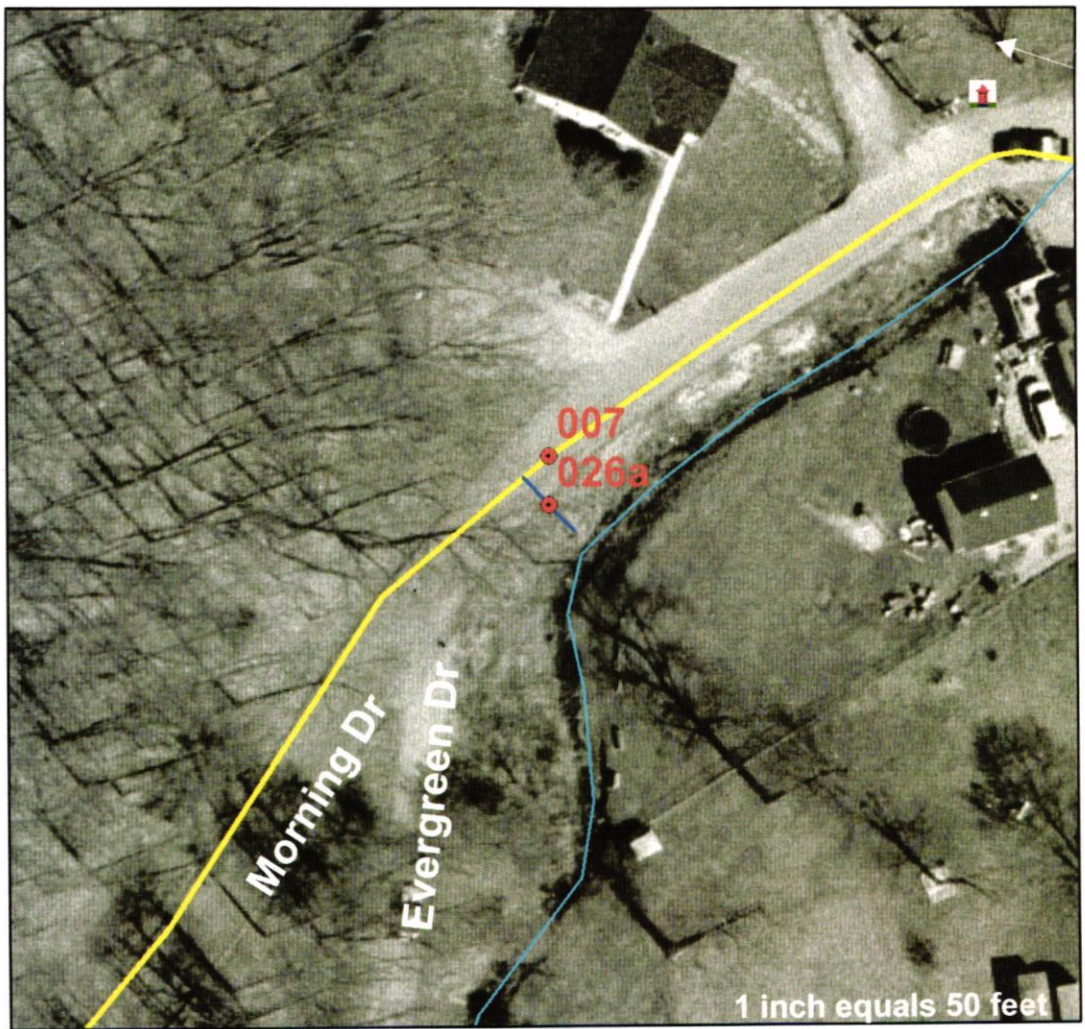
TN St. Plane Coords, NAD 83:
E-2,402,287', N-596,058'
(sub-meter accuracy only)

● GasValves_G

gaslines

DIAMETER

- 1
- 2
- 3
- 4
- 6
- 8



GAS VALVE STREET LOCATION (big Key)
On Morning Dr., near the Intersection With Evergreen Dr.

GAS VALVE INSPECTION						
DATE	SIZE	TYPE	OPERATIONAL		INSPECTED BY	COMMENTS
			YES	NO		
6-6-09	2"		✓		JTB - bell	
6-11-10	2"		✓		Taylor & Fitzhugh	
6-25-11	2"		✓		Taylor & Galt	
6-2-12	2"		✓		Jack Galt	
7-9-13	2"		✓		Taylor/Tim	
7-26-14	2"		✓		Taylor & T.J.	
7-10-15	2"		✓		Taylor & Billy	Big Key
9/14/16	2"		✓		JTB T.J. Andrew	M.B
8-9-17	2"		✓		TJ Andrew	
7-11-18	2"		✓		TJ AH	
7-8-19			✓		TJ AH	
8-15-20			✓		TJ M.J.	
8-14-21	2"		✓		JTB T.J.	

HARRIMAN UTILITY BOARD, HARRIMAN, TENNESSEE

