

ALLEN & HOSHALL
ENGINEERS ARCHITECTS CONSULTANTS

MEMPHIS, TENNESSEE
JACKSON, MS. KNOXVILLE, TN. NASHVILLE, TN.

DRAWN BY
EDM

CHECKED
[Signature]

APPROVED
[Signature]



NOTES:
1. WATER FLOW FROM THE TREATMENT PLANT CAN BE INTERRUPTED FOR A MAXIMUM 6 HOUR PERIOD TO ALLOW CONNECTION OF THE NEW LINE.

NOTICE
Location of utilities and underground structures shown are approximate and those shown are not necessarily all of the existing utilities and structures. It is the contractor's responsibility to determine the exact location and the existence of all utilities and underground structures.

NO.	AS-BUILT	DATE	12-2-91
REVISIONS			

HARRIMAN UTILITY BOARD

WATER LINE & FORCE MAIN RELOCATION

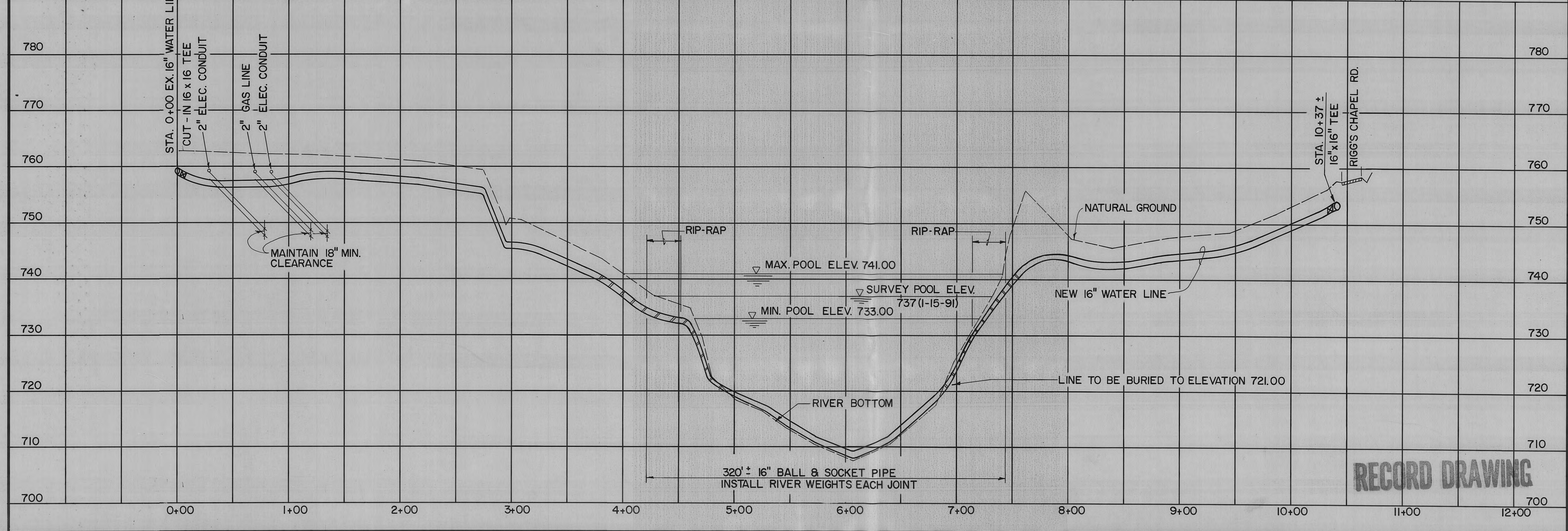
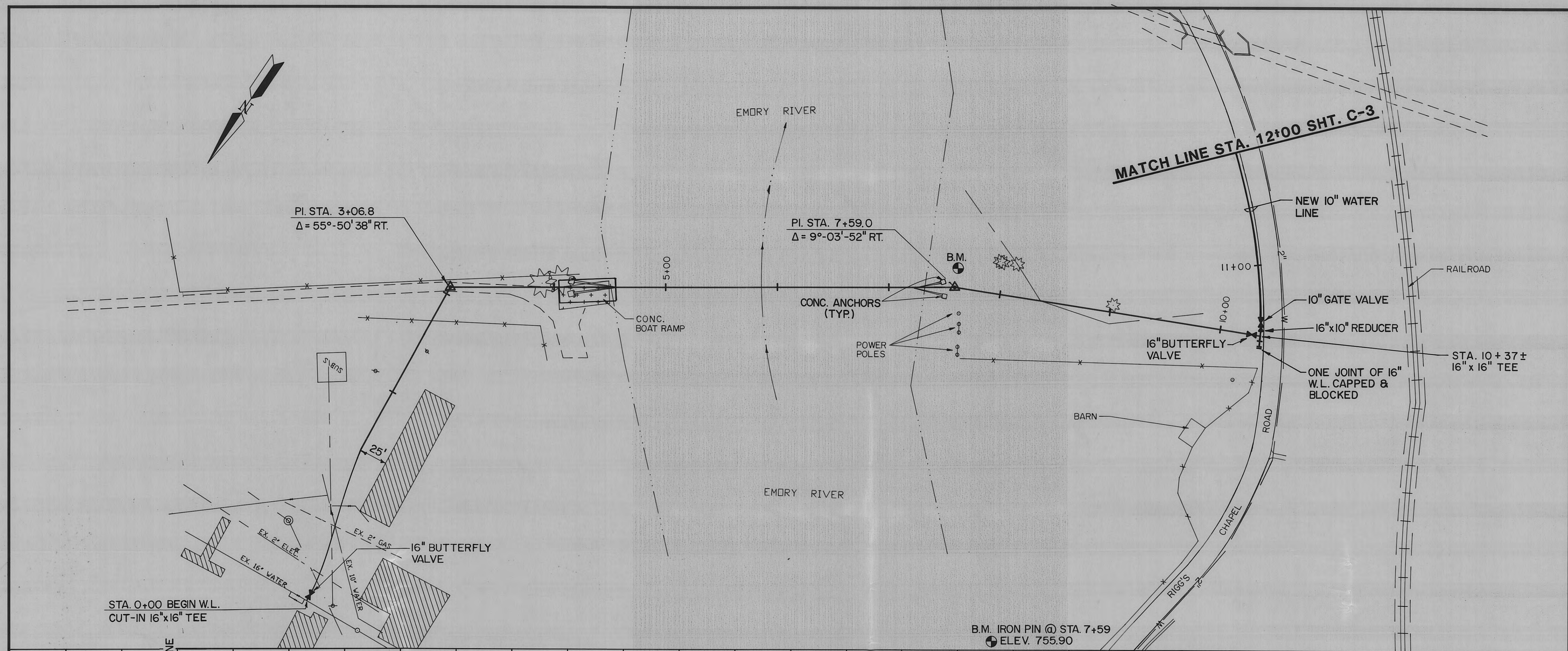
HARRIMAN, TENNESSEE

16" WATER LINE

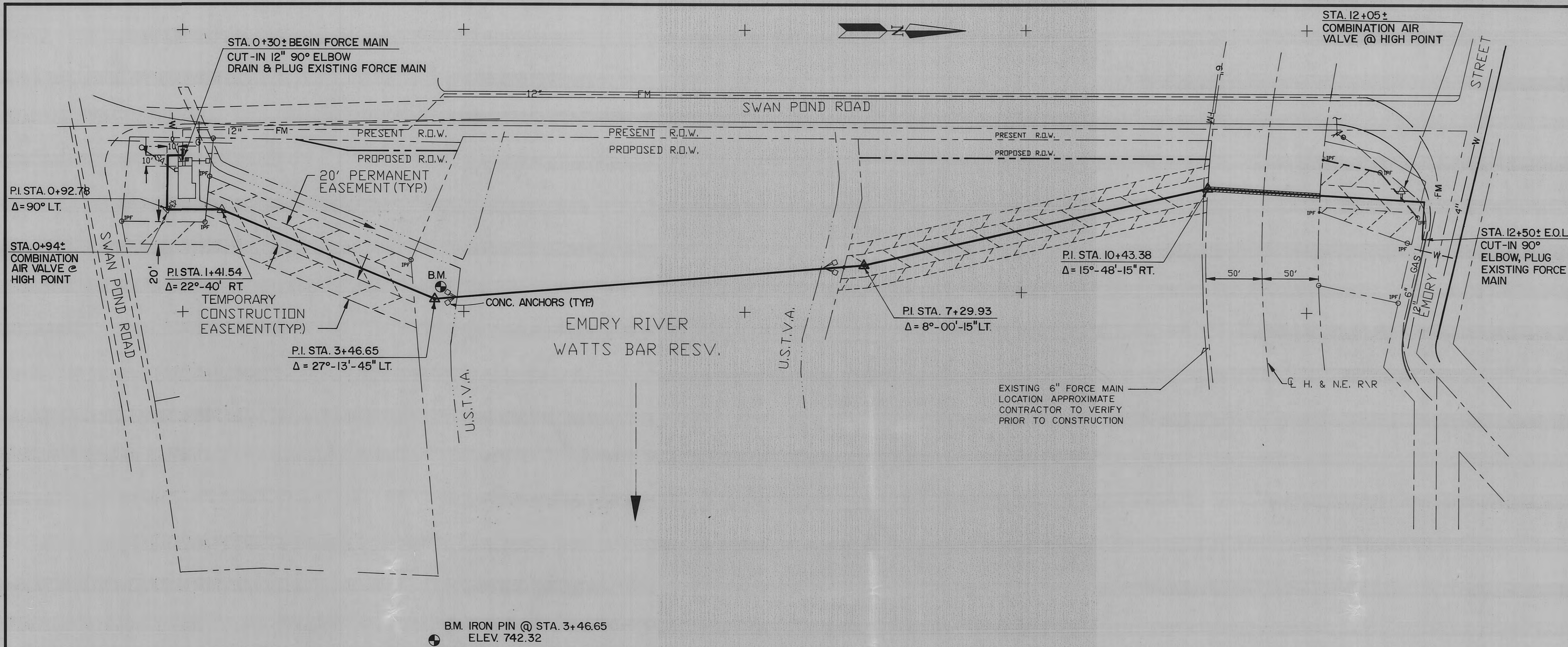
STA. 0+00 TO STA. 12+00

SCALE 1" = 50' H. 1" = 10' V.

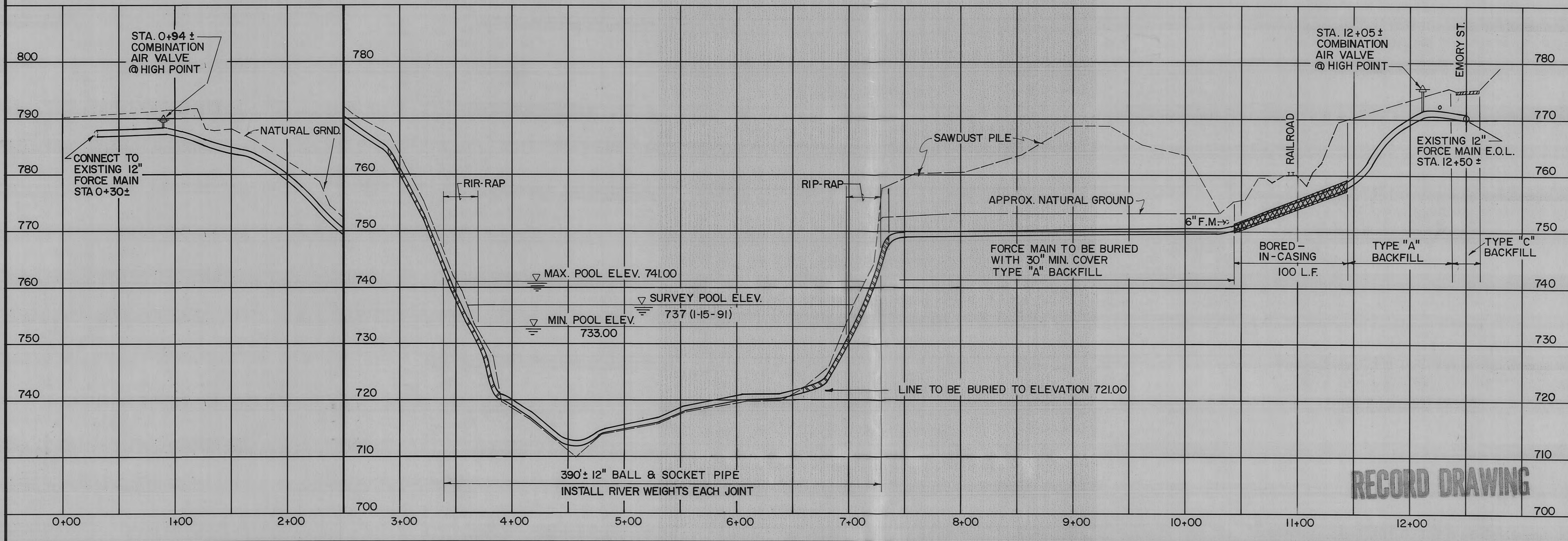
JOB NO. K1453C3001	SHEET NO. C-2
DATE 4/5/91	



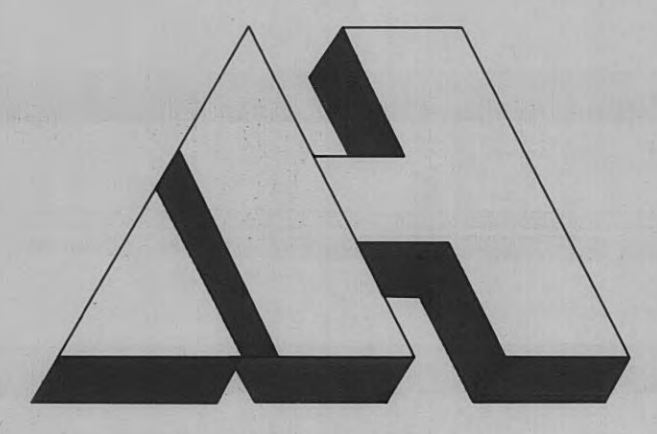
RECORD DRAWING



B.M. IRON PIN @ STA. 3+46.65
ELEV. 742.32



RECORD DRAWING



ALLEN & HOSHALL
ENGINEERS ARCHITECTS CONSULTANTS

MEMPHIS, TENNESSEE
JACKSON, MS. KNOXVILLE, TN. NASHVILLE, TN.

DRAWN BY
EOM

CHECKED
[Signature]

APPROVED
[Signature]



NOTES

NOTICE
Location of utilities and underground structures shown are approximate and those shown are not necessarily all of the existing utilities and structures. It is the contractors responsibility to determine the exact location and the existence of all utilities and underground structures.

NO.	AS-BUILT	DATE	12-3-91
REVISIONS			

HARRIMAN UTILITY BOARD

WATER LINE & FORCE MAIN RELOCATION

HARRIMAN, TENNESSEE

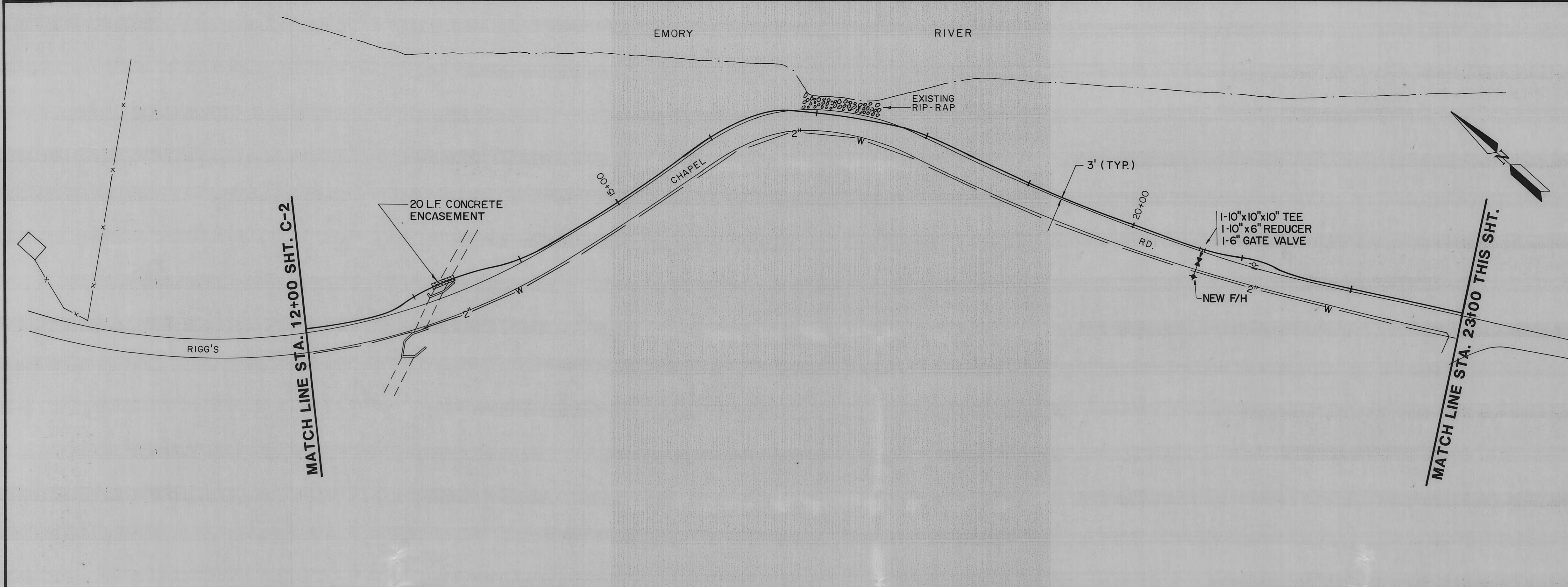
12" FORCE MAIN

SCALE 1" = 50' H. 1" = 10' V.

JOB NO. K1453C3001 SHEET NO. **C-1**

DATE 4/5/91

PROGRESS PRINT ISSUE DATE: **S-285-D**



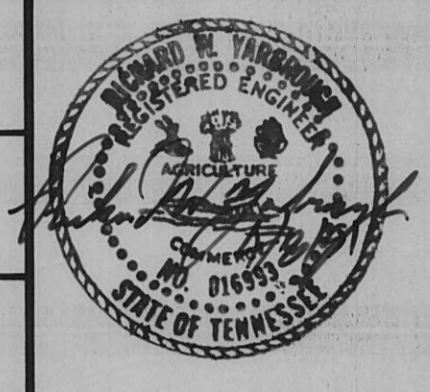
ALLEN & HOSHALL
ENGINEERS ARCHITECTS CONSULTANTS

MEMPHIS, TENNESSEE
JACKSON, MS. KNOXVILLE, TN. NASHVILLE, TN.

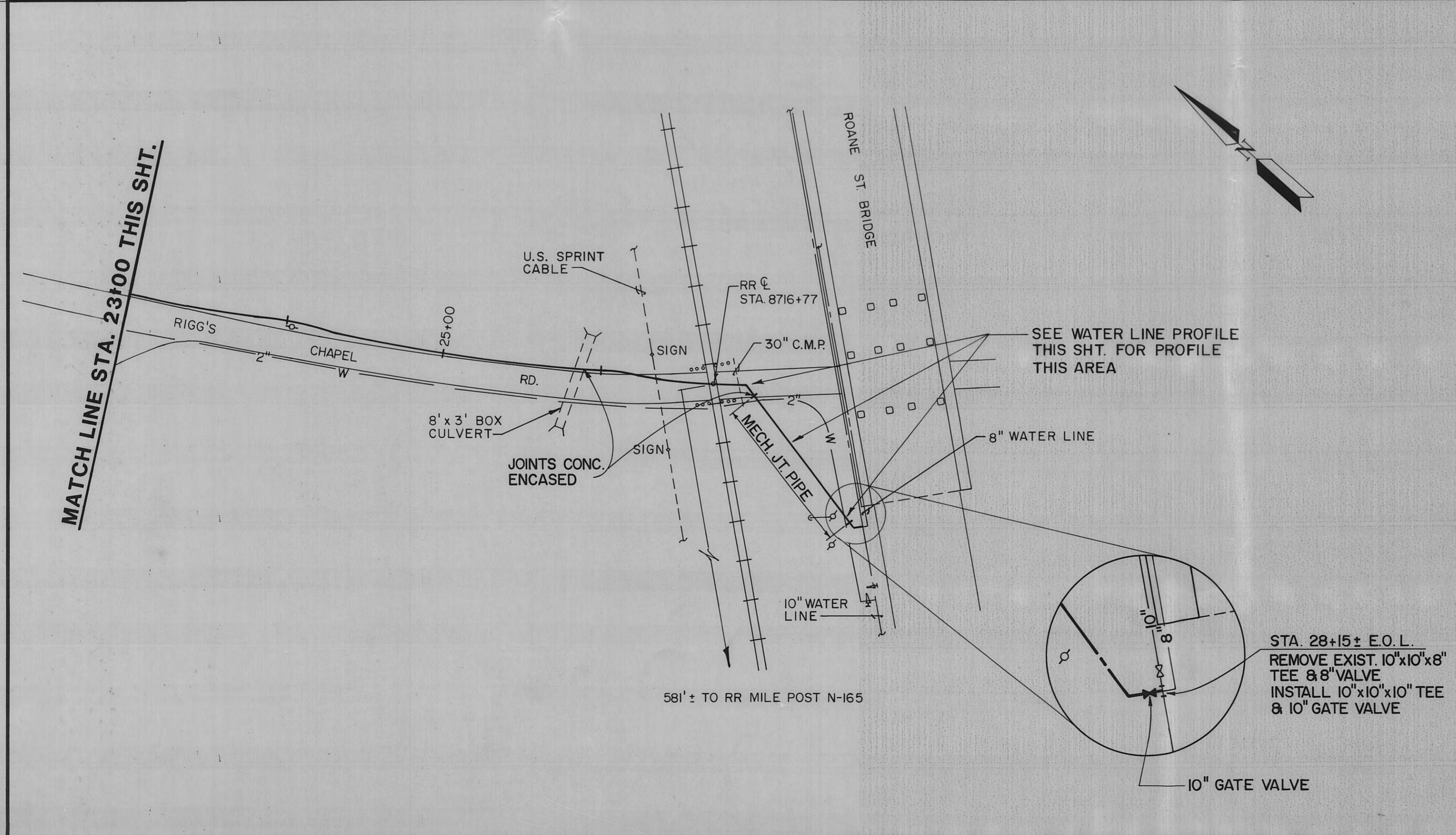
DRAWN BY
EOM

CHECKED
AWM

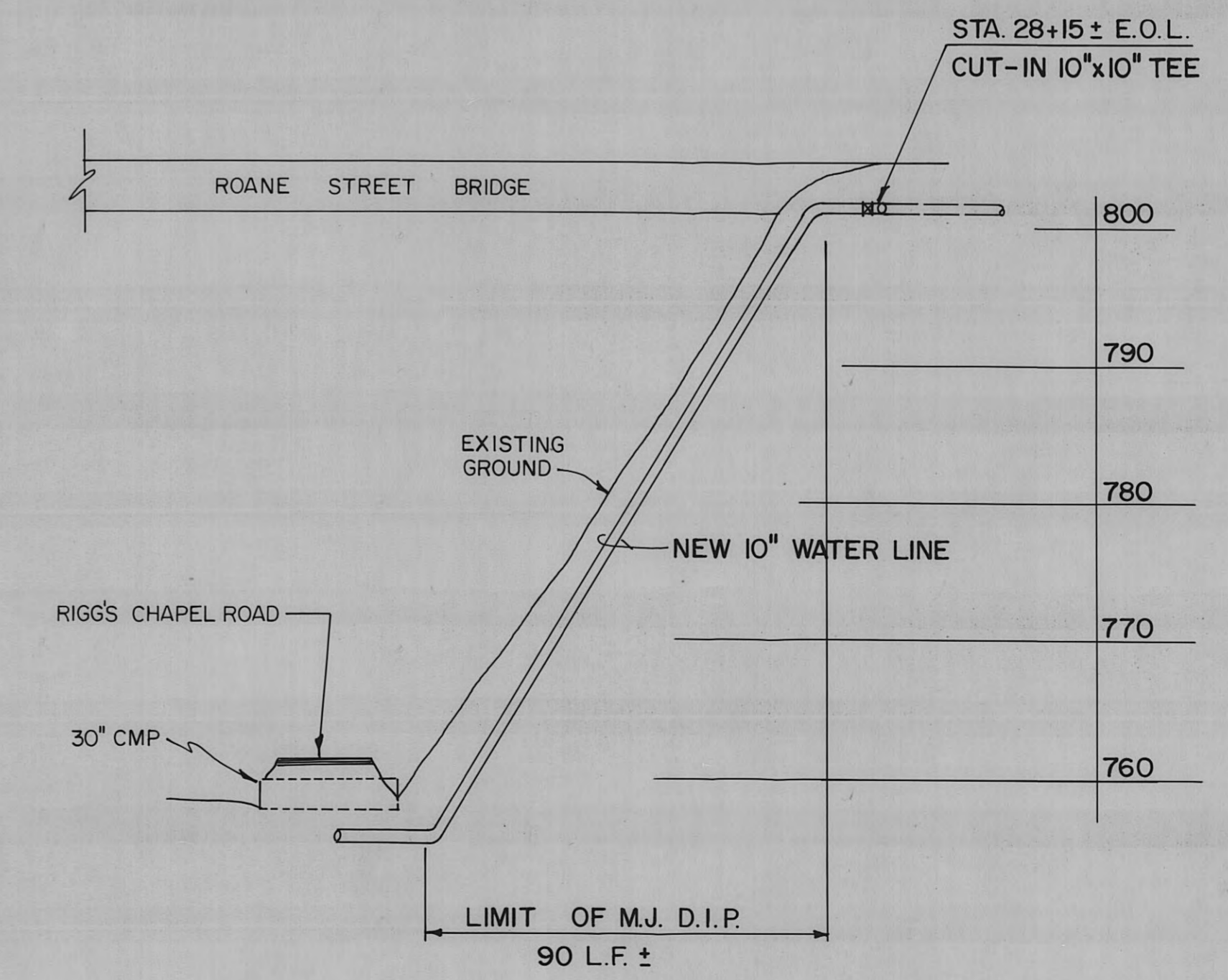
APPROVED



NOTES



NOTE :
EACH JOINT OF 10" D.I.P. (M.J.) SHALL
BE ANCHORED. SEE ANCHOR DETAIL.



SCALE: 1" = 30' H. ; 1" = 10' V.

WATER LINE PROFILE

RECORD DRAWING

NOTICE
Location of utilities and underground structures shown
are approximate and those shown are not necessarily all
of the existing utilities and structures. It is the contractor's
responsibility to determine the exact location and the
existence of all utilities and underground structures.

NO.	AS-BUILT	DATE
		12-3-91

REVISIONS

HARRIMAN UTILITY BOARD

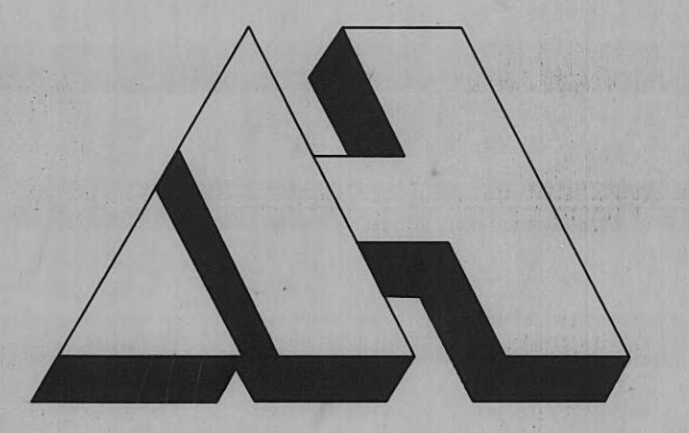
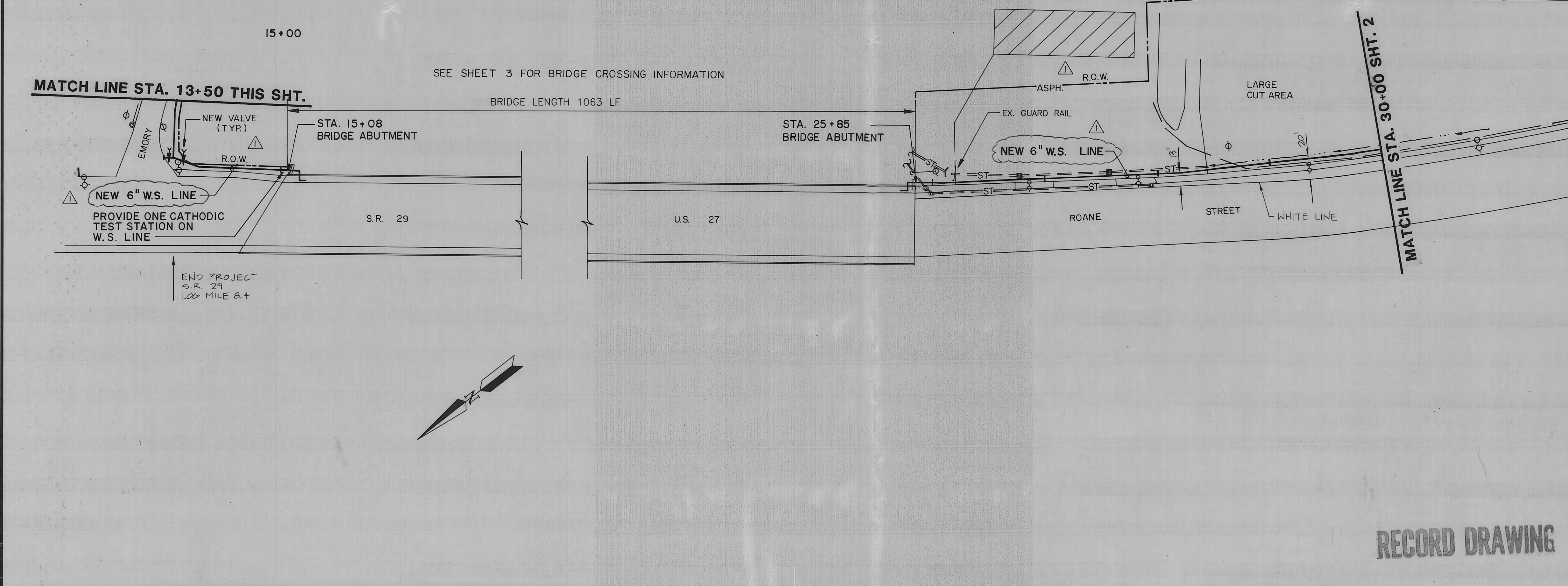
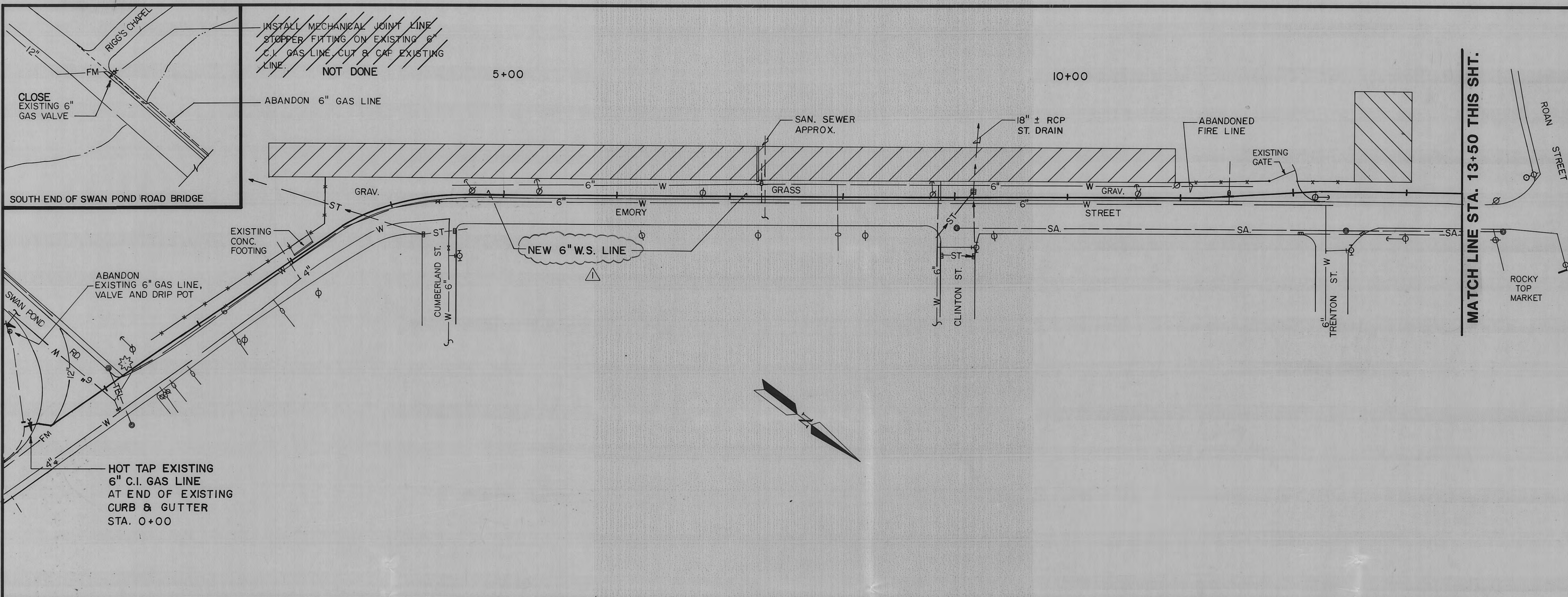
WATER LINE & FORCE MAIN RELOCATION

HARRIMAN, TENNESSEE

**10" WATER LINE
STA. 12+00 TO E.O.L.**

SCALE	1" = 50'
JOB NO.	K1453C3001
DATE	4/5/91
SHEET NO.	C-3

PROGRESS PRINT ISSUE DATE: W-287-D



ALLEN & HOSHALL
ENGINEERS ARCHITECTS CONSULTANTS

MEMPHIS, TENNESSEE
JACKSON, MS. KNOXVILLE, TN. NASHVILLE, TN.

DRAWN BY
TER

CHECKED
EDB

APPROVED
EDB



NOTES:
1. AFTER COMPLETION OF HOT TAP CONNECTIONS FOR NEW GAS LINE BLOW THE EXISTING LINE OVER THE BRIDGE DOWN, PURGE WITH INERT GAS AND CUT AND CAP AT THE EXISTING VALVES.

NOT DONE

NOTICE
Location of utilities and underground structures shown are approximate and those shown are not necessarily all of the existing utilities and structures. It is the contractor's responsibility to determine the exact location and the existence of all utilities and underground structures.

NO.	REVISIONS	DATE
	AS-BUILT	12-3-91
1	ADDED R.O.W. - CHANGE P.E. TO W.S.	6/20/91

HARRIMAN UTILITY BOARD

GAS LINE RELOCATION

HARRIMAN, TENNESSEE

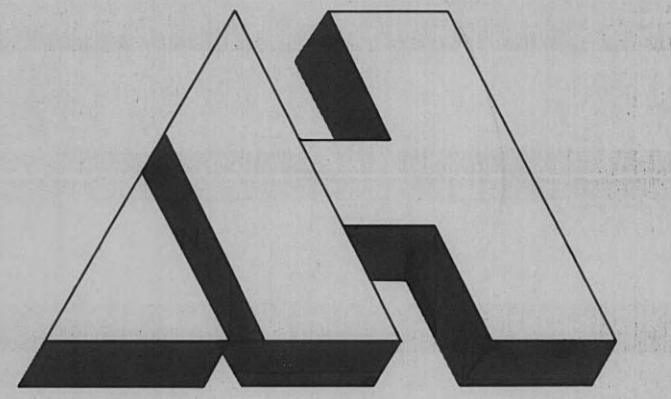
STA. 0+00 TO STA. 30+00

SCALE 1"=50'

JOB NO. **K1453C3001** SHEET NO. **1**

DATE **04/04/91**

RECORD DRAWING



ALLEN & HOSHALL
ENGINEERS ARCHITECTS CONSULTANTS

MEMPHIS, TENNESSEE
JACKSON, MS. KNOXVILLE, TN. NASHVILLE, TN.

DRAWN BY

TER

CHECKED

EQB

APPROVED

EQB



NOTES

NOTICE

Location of utilities and underground structures shown are approximate and those shown are not necessarily all of the existing utilities and structures. It is the contractor's responsibility to determine the exact location and the existence of all utilities and underground structures.

AS-BUILT	12-3-91
ADDED ROW-CHANGE PE. TO W.S.	6/20/91
NO.	DATE

REVISIONS

HARRIMAN UTILITY BOARD

GAS LINE RELOCATION

HARRIMAN, TENNESSEE

STA. 30+00 TO STA. 50+85

SCALE 1"=50'

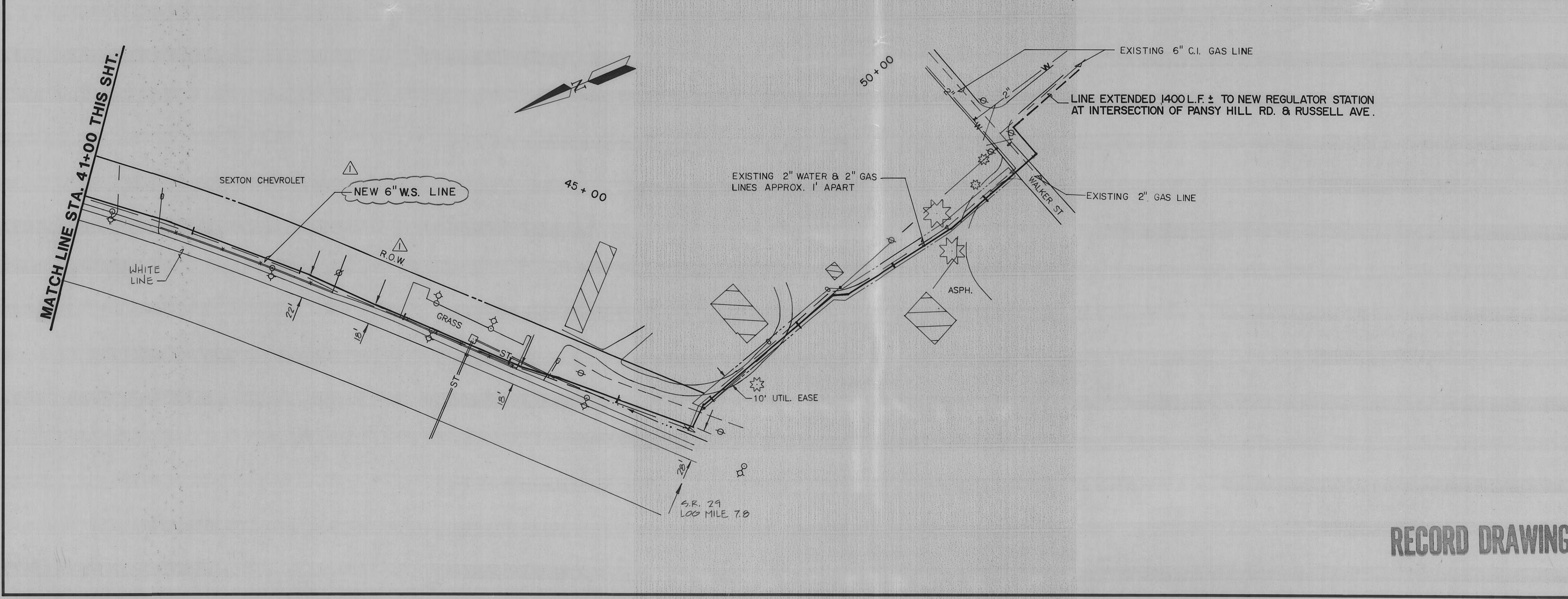
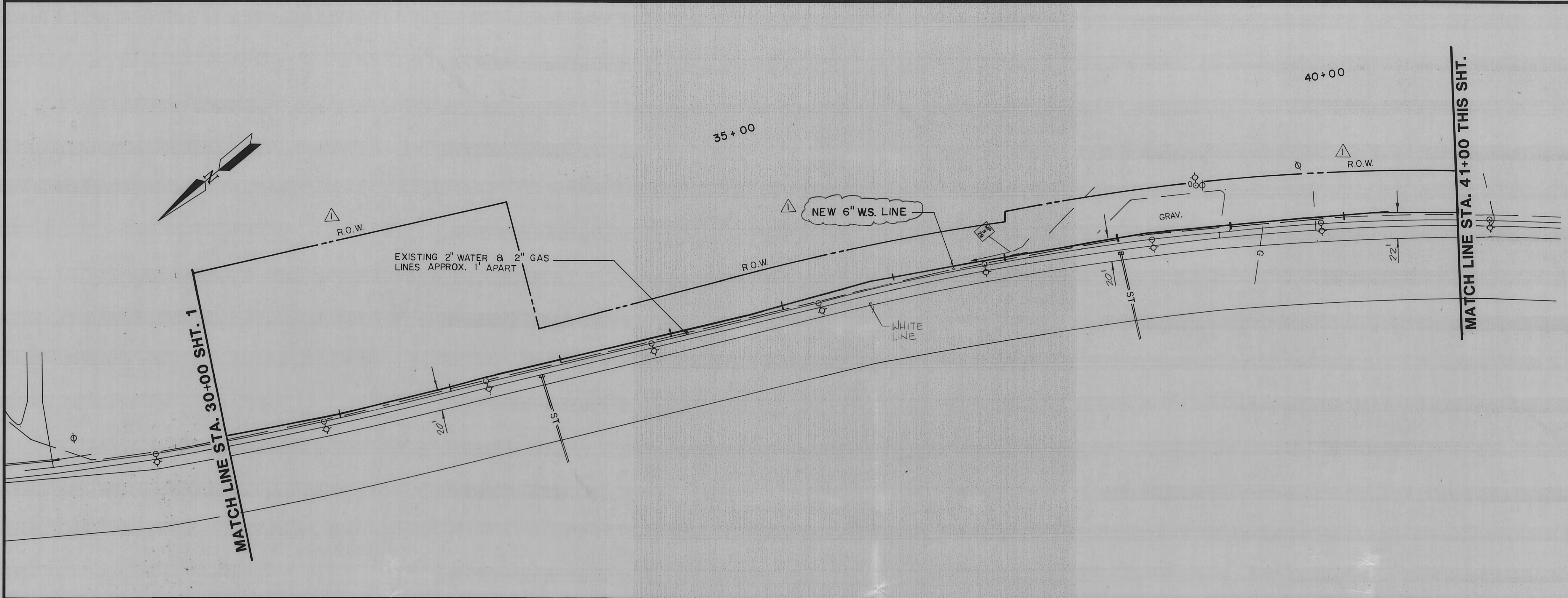
JOB NO.
K1453C3001

SHEET NO.

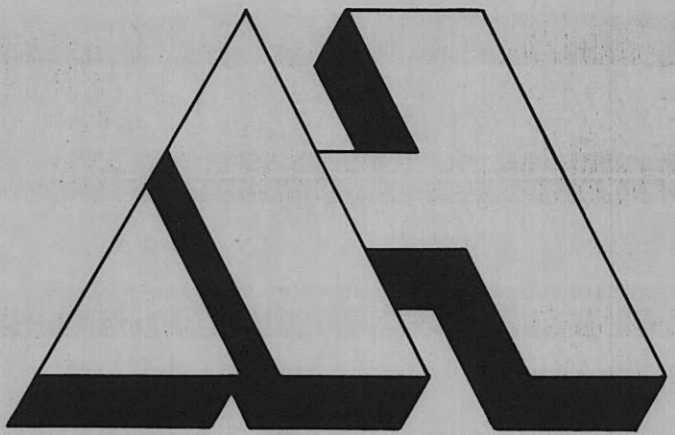
2

DATE
04/04/91

PROGRESS PRINT ISSUE DATE



RECORD DRAWING



ALLEN & HOSHALL
ENGINEERS ARCHITECTS CONSULTANTS

MEMPHIS, TENNESSEE
JACKSON, MS. KNOXVILLE, TN. NASHVILLE, TN.

DRAWN BY

TER

CHECKED

JRD

APPROVED

RB



NOTES

AS-BUILT	12-3-91
REVISOR	DATE
REVISIONS	
NO.	DATE

HARRIMAN UTILITY BOARD

GAS LINE RELOCATION

HARRIMAN, TENNESSEE

S.R. 29 BRIDGE CROSSING

SCALE 1"=50'

JOB NO.

K1453C3001

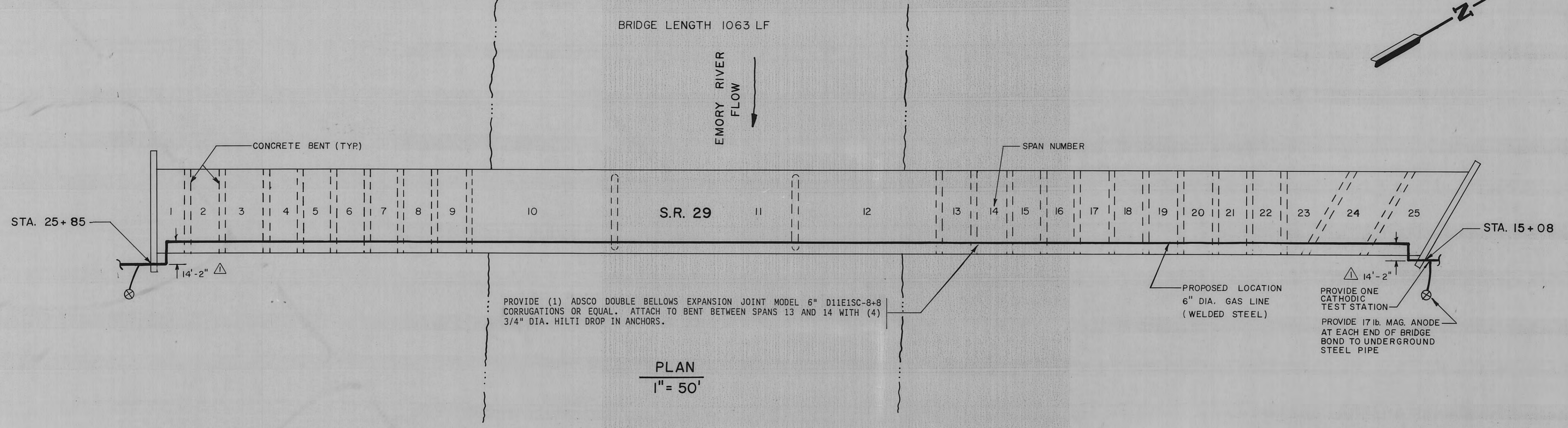
DATE

04/04/91

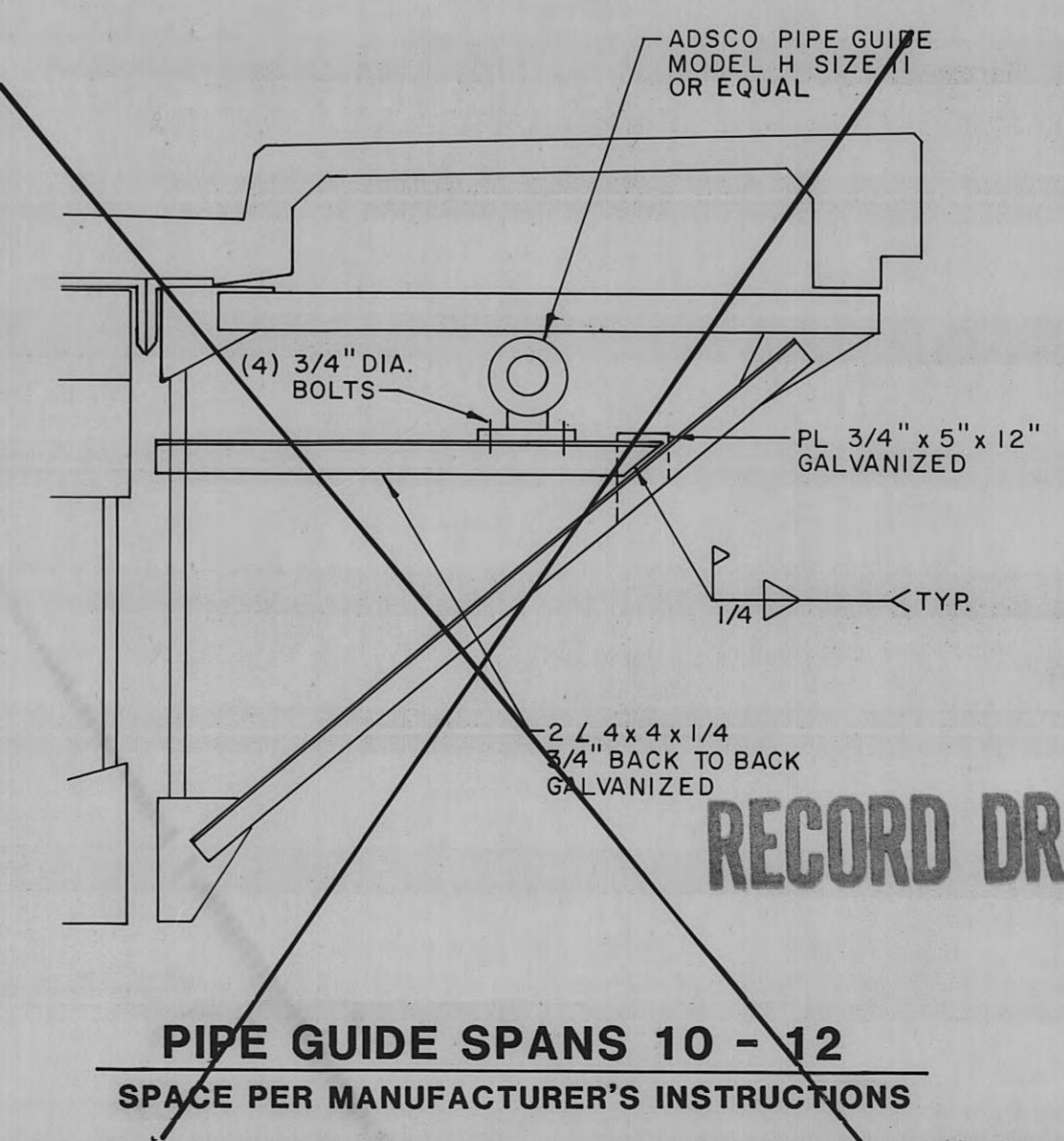
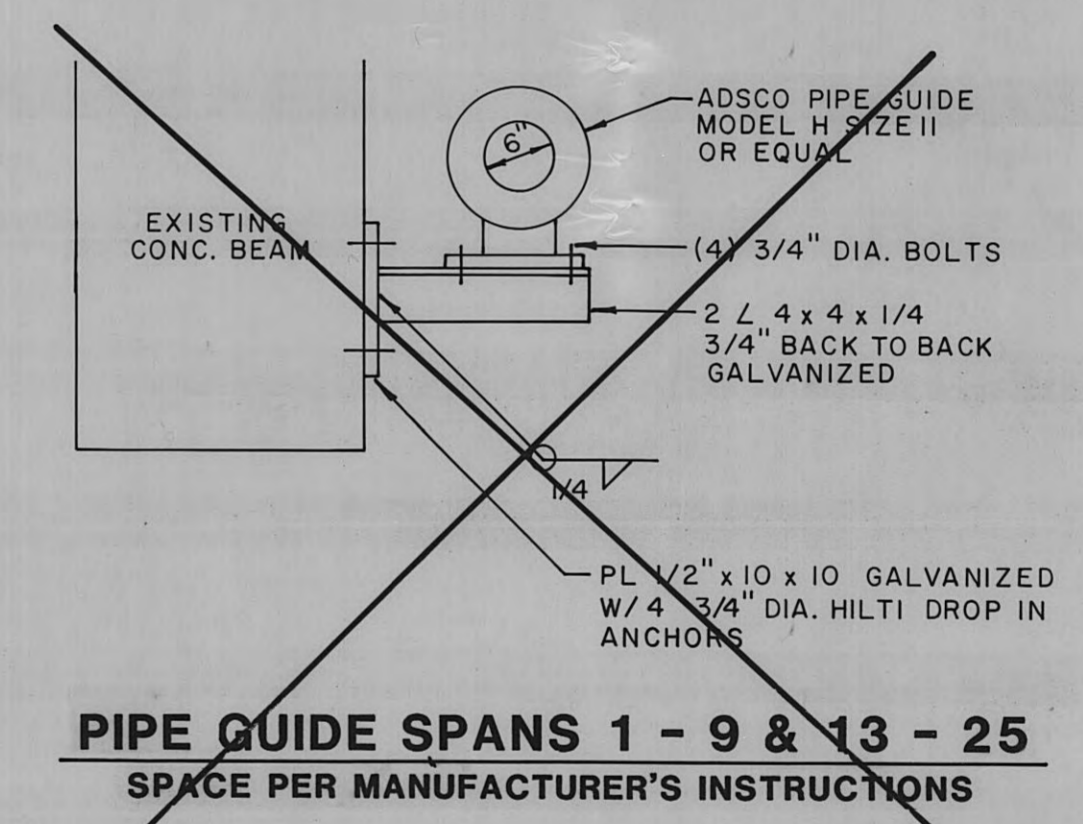
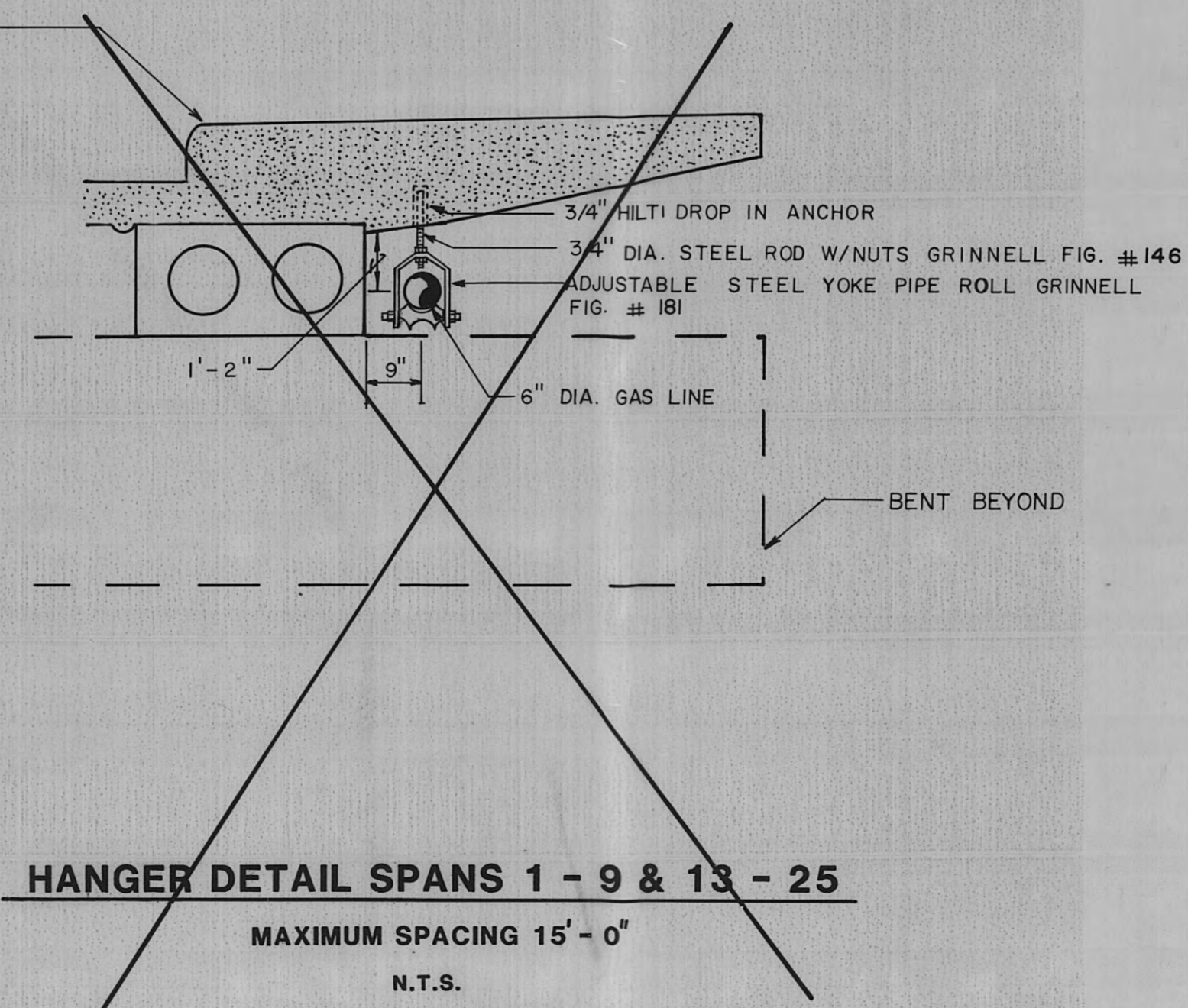
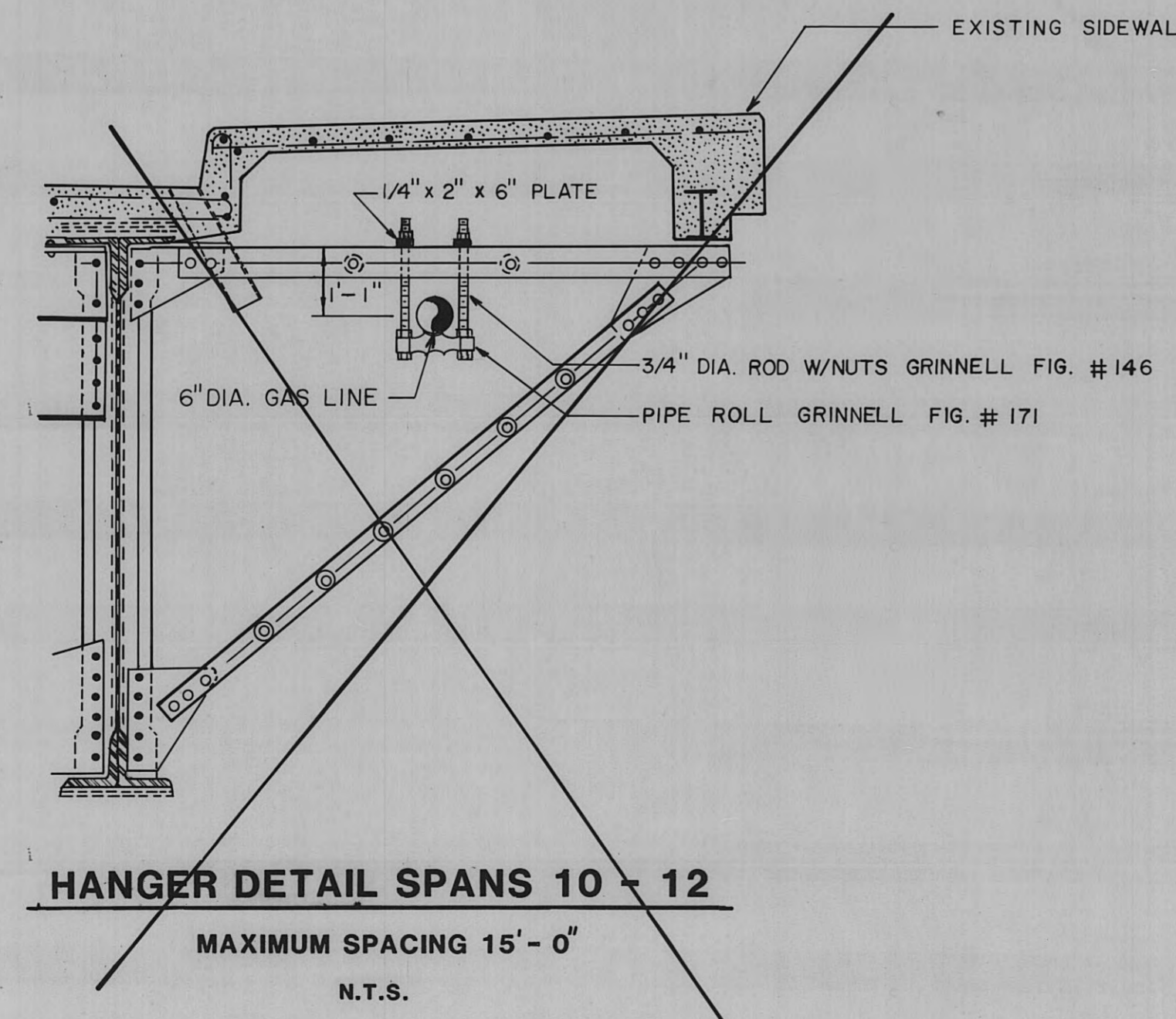
SHEET NO.

3

PROGRESS PRINT ISSUE DATE:

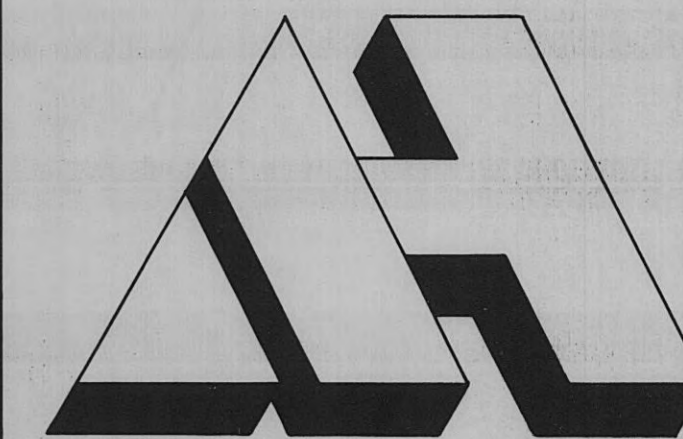


SEE SHT. 4 FOR BRIDGE HANGING DETAILS.



RECORD DRAWING

BRUNING 44-232 74124



ALLEN & HOSHALL
ENGINEERS ARCHITECTS CONSULTANTS

MEMPHIS, TENNESSEE
JACKSON, MS. KNOXVILLE, TN. NASHVILLE, TN.

DRAWN BY

EDM

CHECKED

EPB

APPROVED

EPB



NOTES

AS-BUILT	12-3-91
REVISOR	DATE
NO.	DATE

REVISIONS

HARRIMAN UTILITY BOARD

GAS LINE RELOCATION

HARRIMAN, TENNESSEE

BRIDGE HANGING DETAILS

SCALE N.T.S.

JOB NO. SHEET NO.

K1453C3001

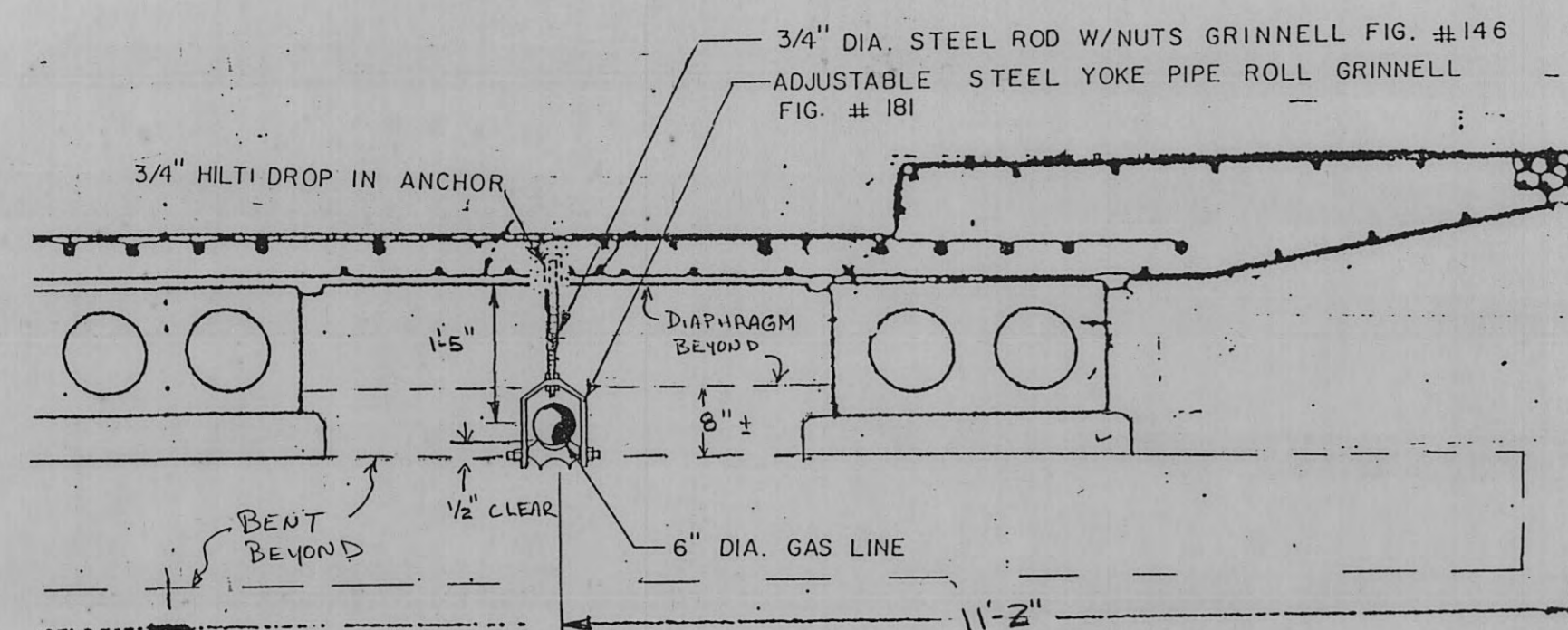
DATE

04/04/91

4

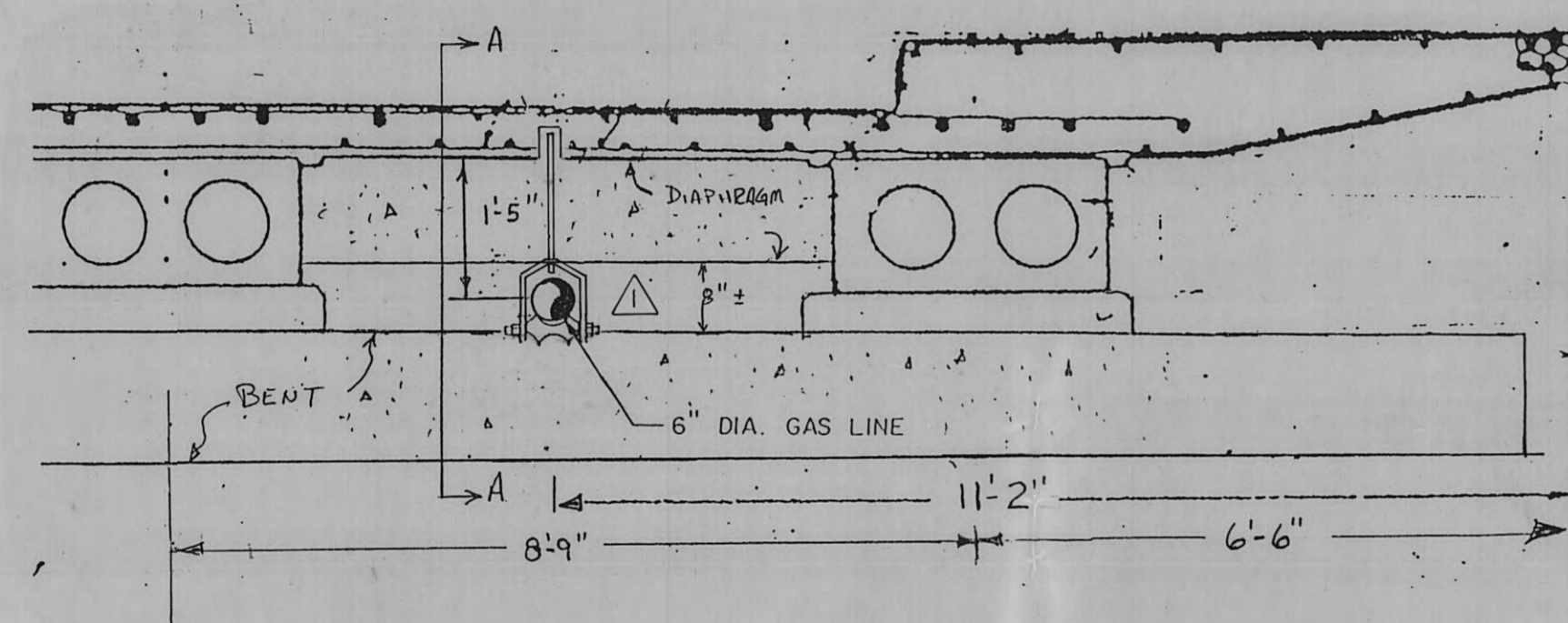
RECORD DRAWING

PROGRESS PRINT ISSUE DATE:



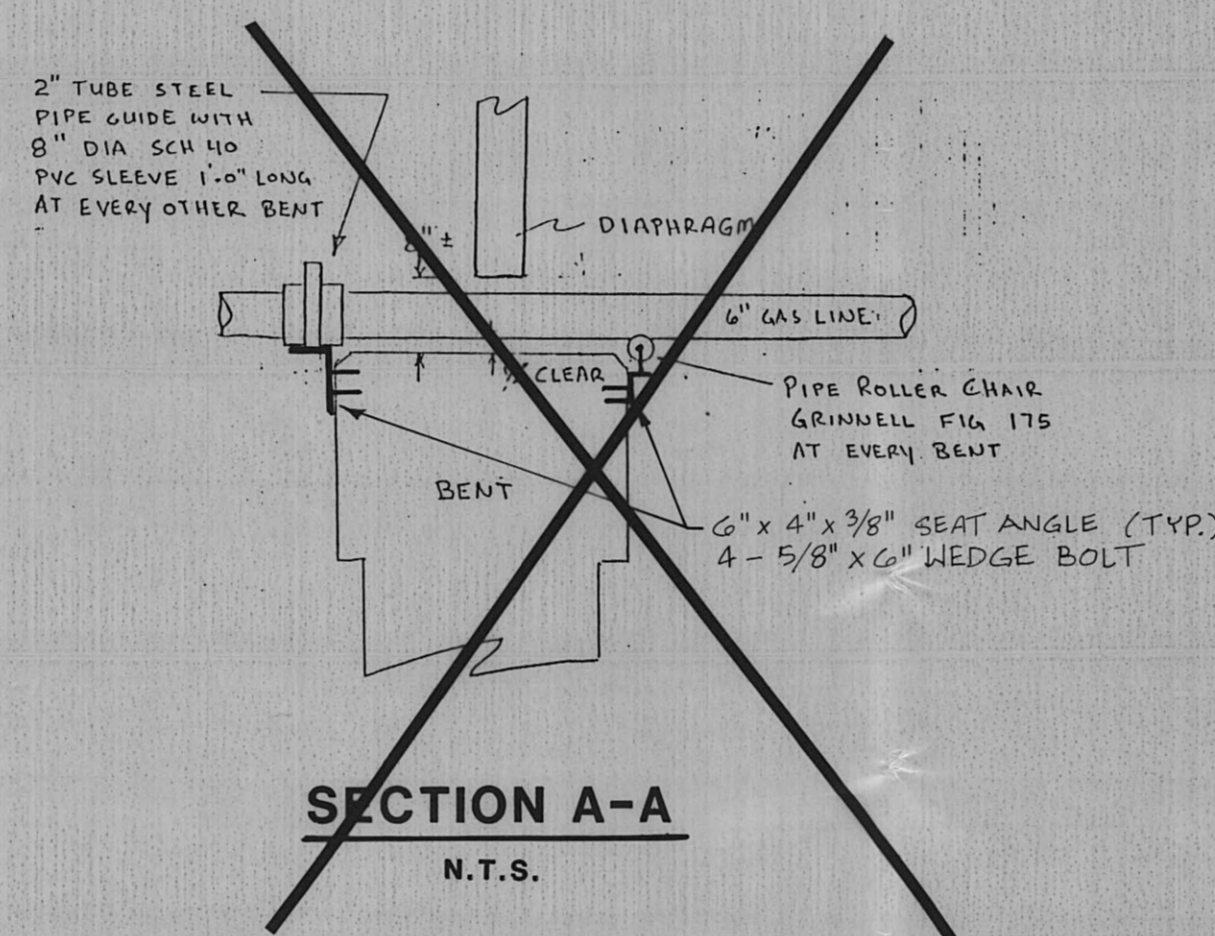
SECTION ON CONC. BRIDGE BTW. BENTS

SPANS 1-9 & 13-25
N.T.S.



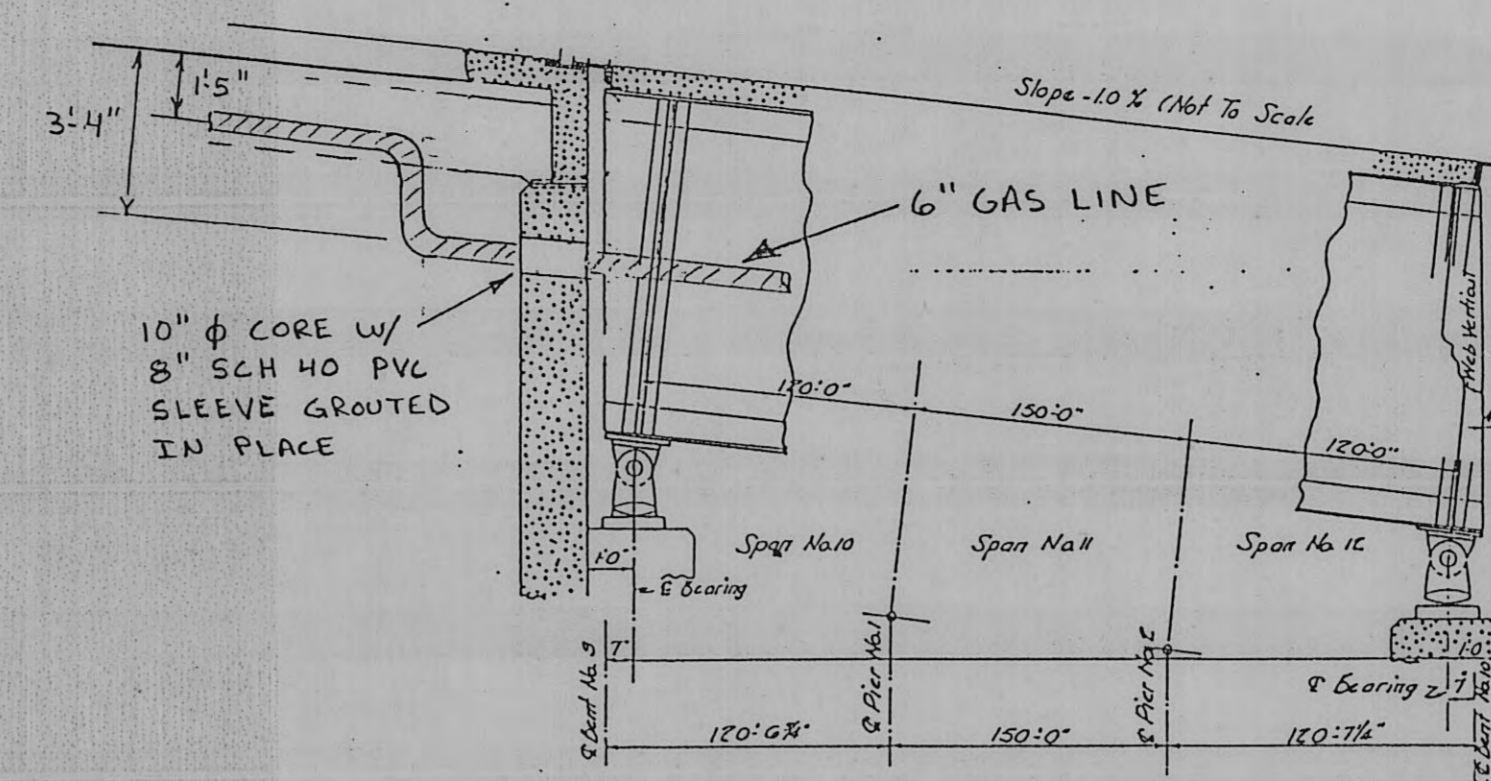
SECTION ON CONC. BRIDGE AT BENTS

SPANS 1-9 & 13-25
N.T.S.



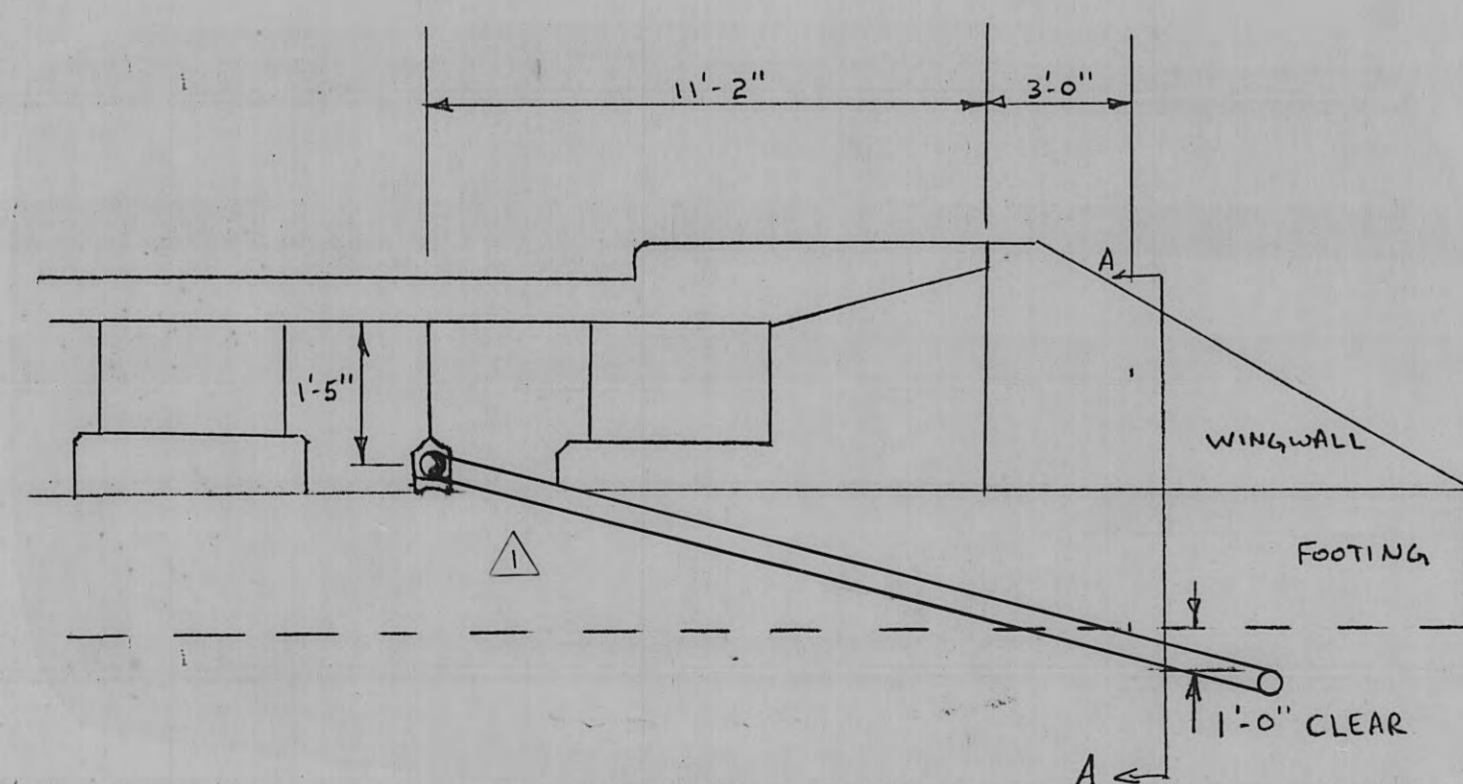
SECTION A-A

N.T.S.



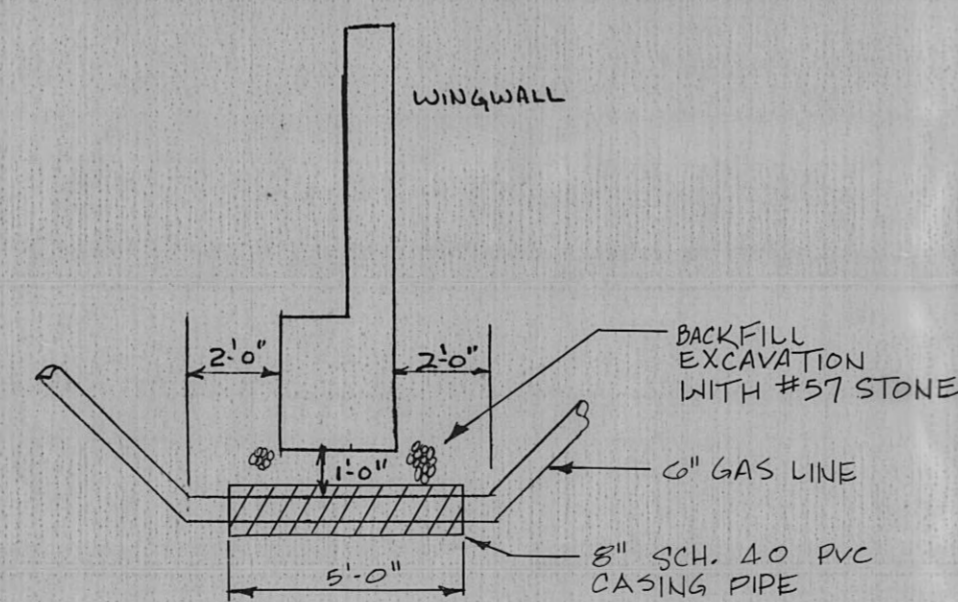
SECTION AT PLATE GIRDER BRIDGE ENDS

BENT 9 & 10
N.T.S.



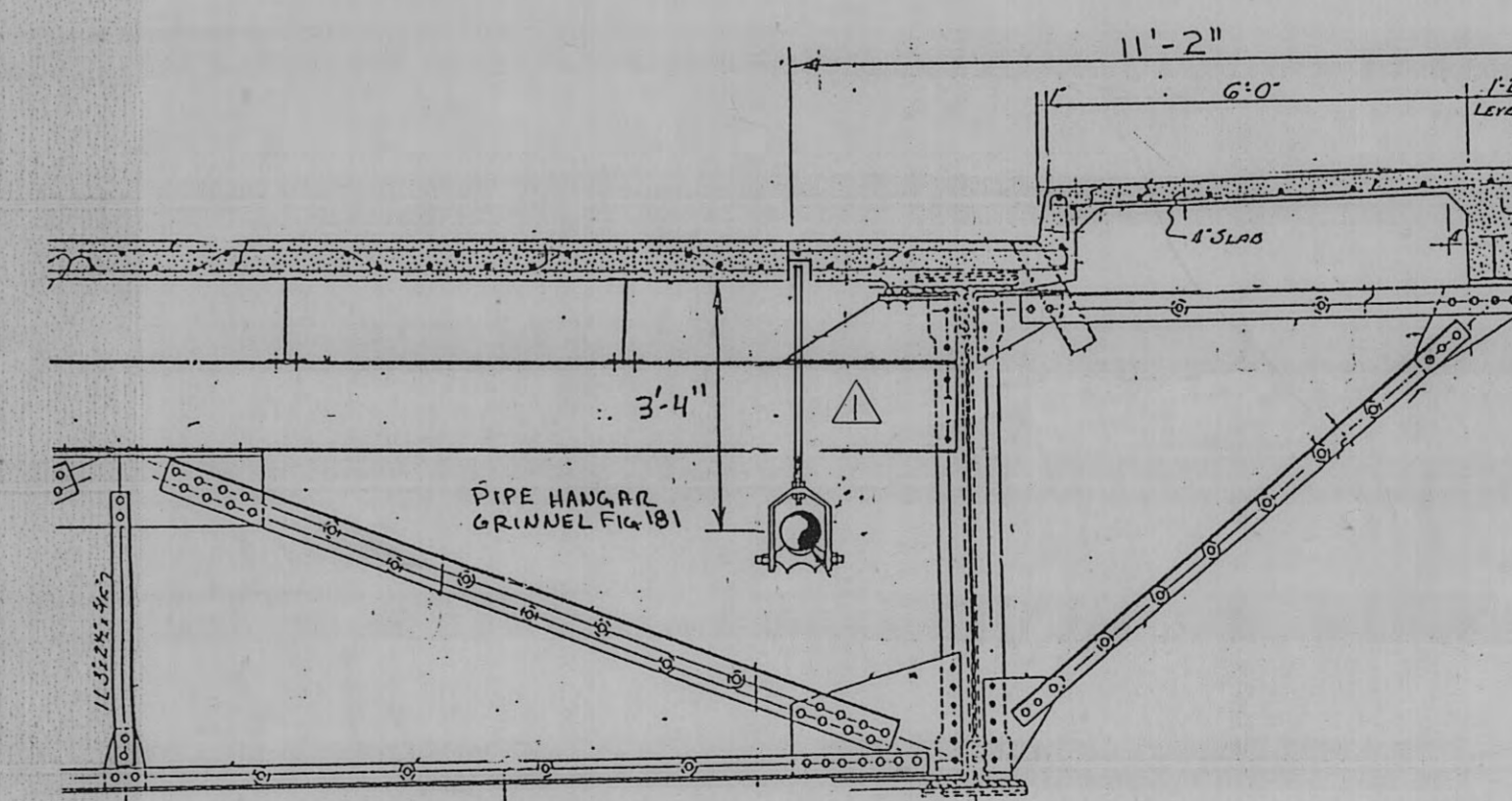
SECTION AT ABUTMENT WALLS

N.T.S.



SECTION A-A

N.T.S.



SECTION ON PLATE GIRDER BRIDGE

SPANS 10-12
N.T.S.